

Plat of Lots 1 and 2 of U Lazy Two Ranch Estates Subdivision and Dedicated Right-of-Way

Located in (and formerly all of) that portion of the SE1/4 SW1/4 lying north of Nemo Road in Section 14, T2N, R0E, BHM, and, The N1/2 NE1/4 less Lot 1 of Barbara Subdivision, and the unplatted portion of the NE1/4 NW1/4 lying east of Nemo Road in Section 23, T2N, R0E, BHM, Pennington County, South Dakota

Prepared by: **Geometric & Consulting Engineers, Inc.**
 P.O. Box 8154
 Rapid City, South Dakota 57729
 Project # 08-01-01

08SV021



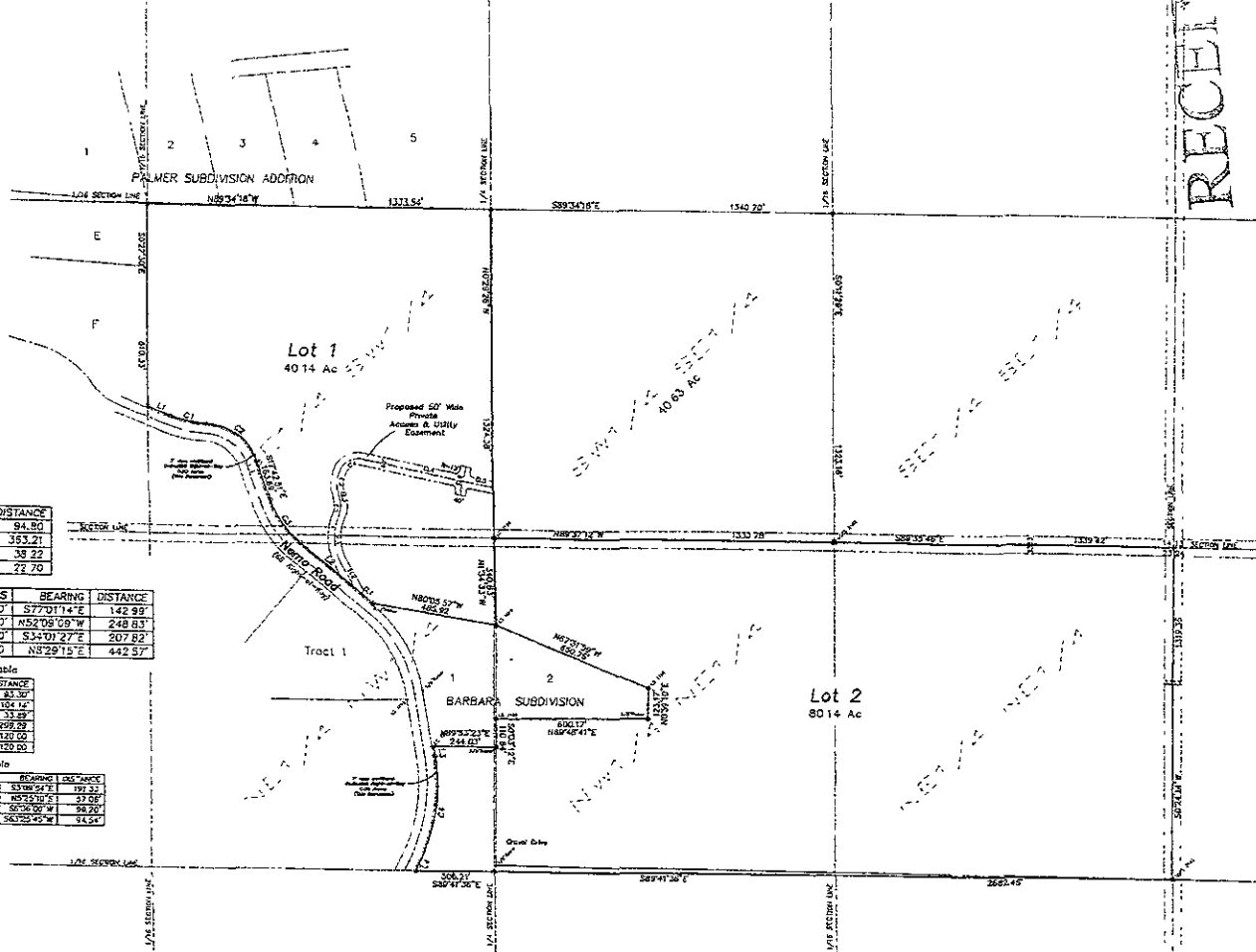
1" = 300'
 March 26, 2008
 Basis of Bearings
 GPS Observation

NUM	DELTA	ARC	RADIUS	BEARING	DISTANCE
C1	19°08'28"	143.65'	430.00'	S77°01'14"E	142.99'
C2	88°52'36"	264.47'	220.00'	N52°08'08"W	248.83'
C3	32°37'13"	210.65'	370.00'	S34°01'27"E	207.82'
C4	34°47'57"	449.45'	740.00'	N8°29'15"E	442.57'

NUM	BEARING	DISTANCE
E1	N82°22'00"W	33.50'
E2	N88°19'36"W	104.74'
E3	N81°08'33"W	33.29'
E4	S72°29'32"E	298.93'
E5	S77°22'38"E	120.00'
E6	S12°30'02"W	120.00'

NUM	DELTA	ARC	RADIUS	BEARING	DISTANCE	CHORD
C01	50°12'24"	197.42'	350.00'	S33°00'15"E	193.33'	193.33'
C02	33°58'16"	37.27'	100.00'	N82°50'16"E	33.05'	33.05'
C03	33°58'16"	183.55'	100.00'	S82°50'16"W	94.20'	94.20'
C04	35°56'10"	102.25'	75.00'	S85°55'42"W	84.54'	84.54'

NUM	BEARING	DISTANCE
L1	N67°27'00"W	94.80'
L2	N50°20'04"W	363.21'
L3	S8°54'44"E	38.22'
L4	N25°53'13"E	77.70'



RECEIVED

MAR 20 2008

Rapid City, SD
 Management