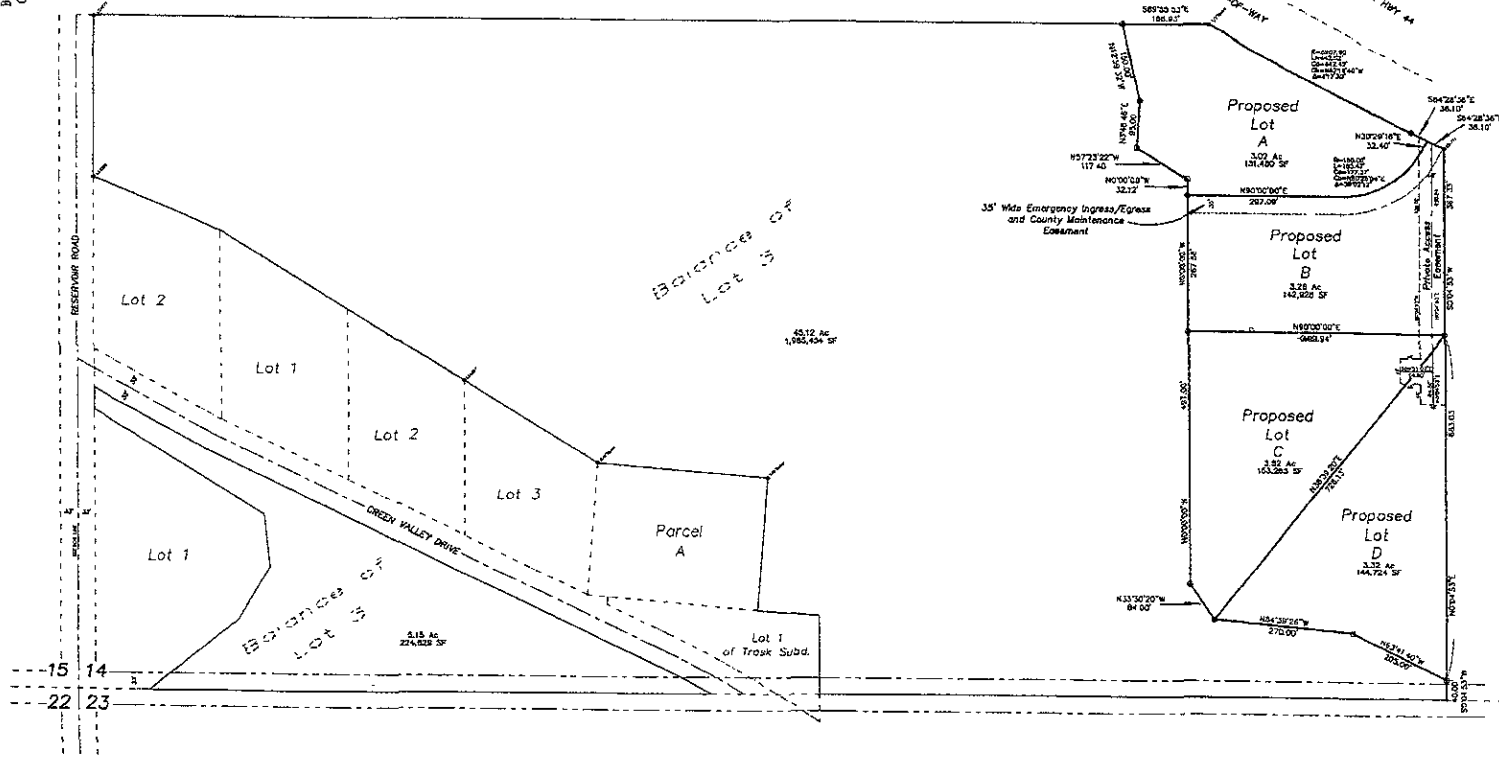


February 4, 2008
Revised February 11, 2008
Revised March 13, 2008
Basis of Bearings
GPS Observation

• = Found Survey Monument as noted
• @ = Set Rebar with cap marked "RW Fisk 6565"



Plat of Lots A, B, C, & D of Clemmons Addition
Located in (and formerly a portion of) the Balance of Lot 3
in the S1/2 SW1/4, Section 14, T1N, R8E, B.H.M.
Pennington County, South Dakota

Prepared by
Fisk Land Surveying &
Consulting Engineers, Inc.
P.O. Box 9154
Sioux Falls, South Dakota 57109
605-336-1333
Project # 08-01-01

