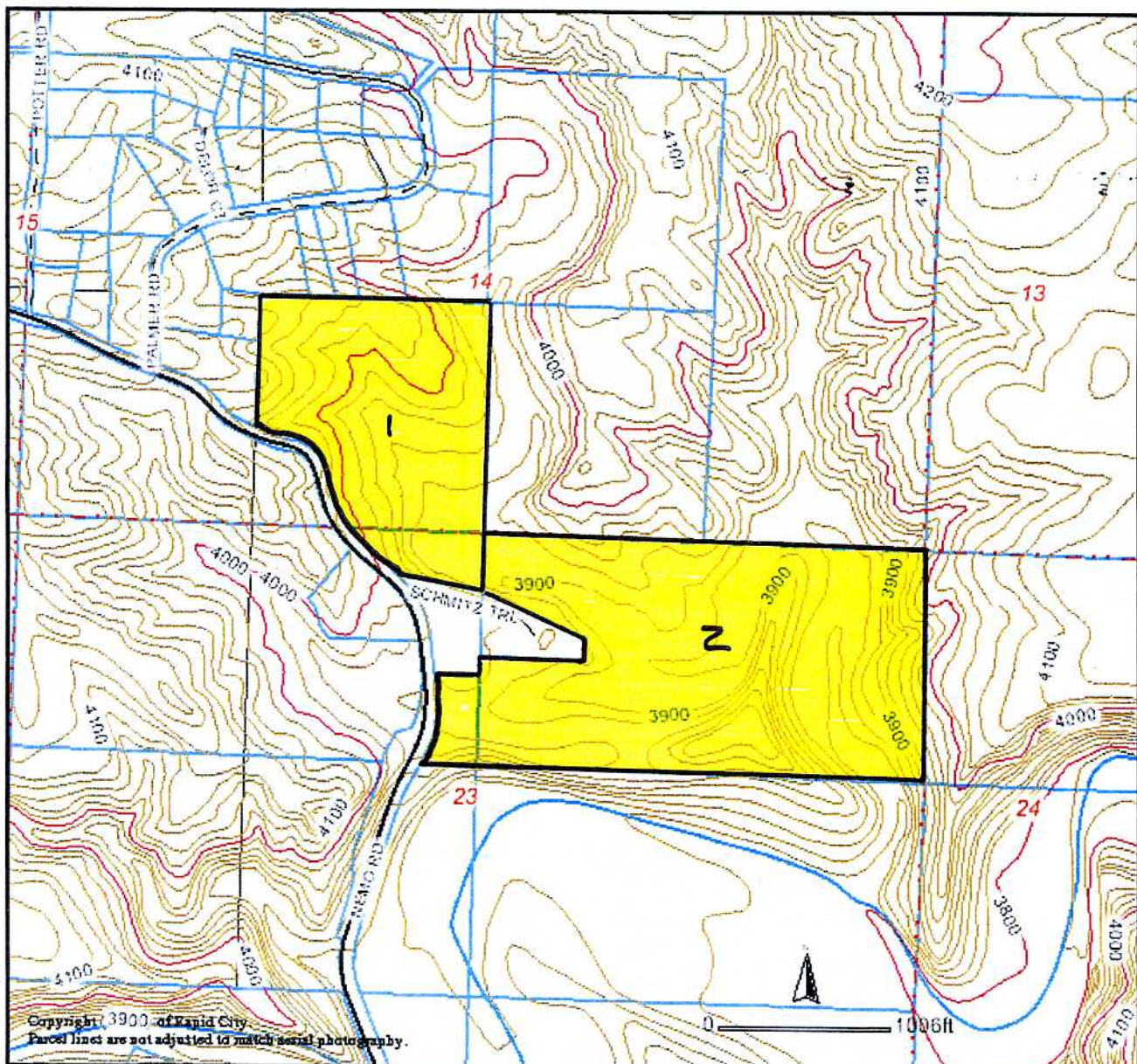


TOPOGRAPHIC MAP

Proposed Lots 1 and 2 of U Lazy Two Ranch Estates Subdivision,
Located in Sections 14 and 23, T2N, R6E, BHM,
Pennington County, South Dakota



Copyright © 3900 of Rapid City.
Parcel lines are not adjusted to match aerial photography.

RECEIVED