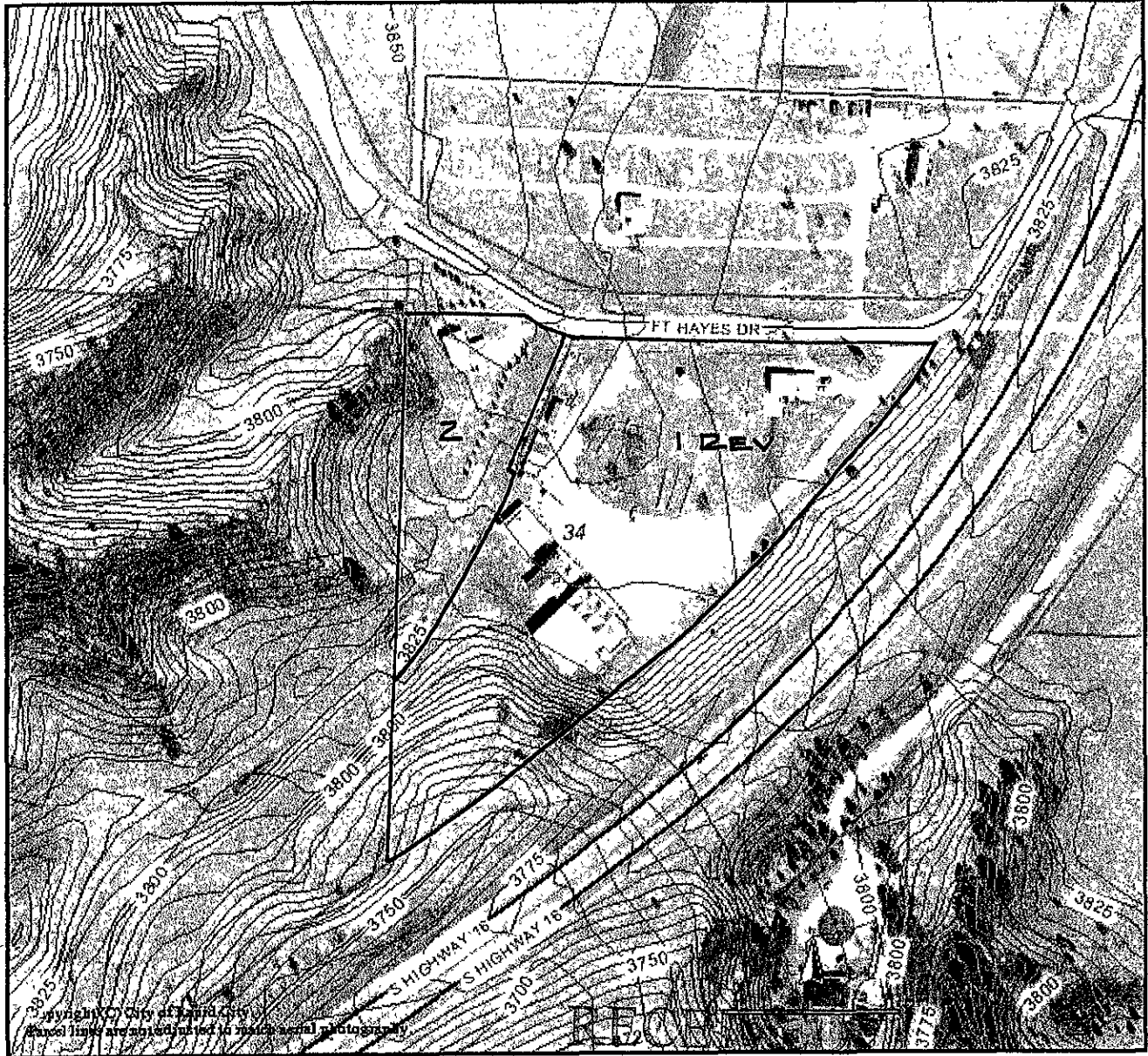


TOPOGRAPHIC MAP

**Proposed Lots 1 Revised and 2 of Fort Hayes Subdivision,
Located in Section 34, T1N, R7E, BHM,
Pennington County, South Dakota**

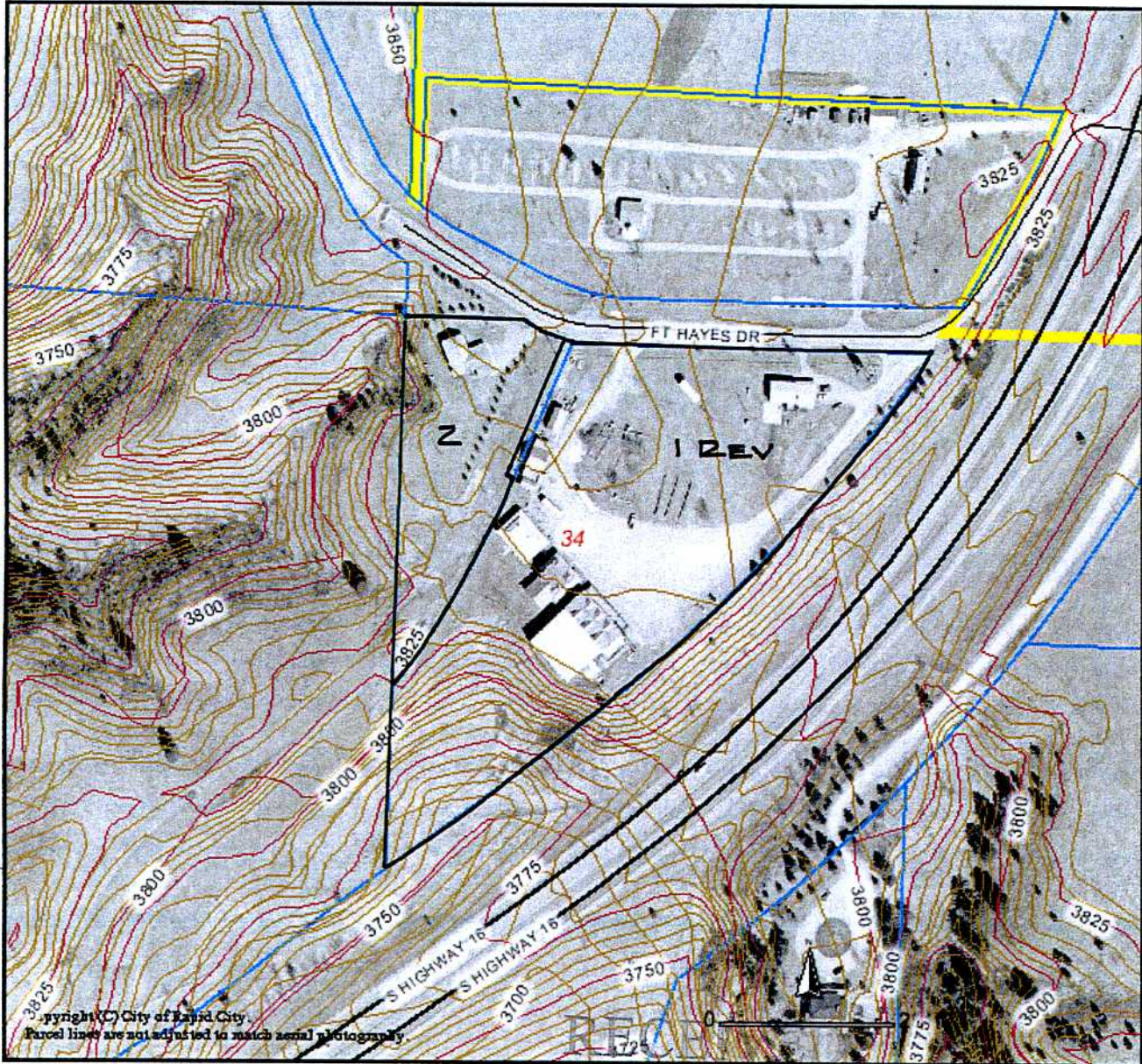


MAR 20 2008

Rapid City Growth
Management Department

TOPOGRAPHIC MAP

**Proposed Lots 1 Revised and 2 of Fort Hayes Subdivision,
Located in Section 34, T1N, R7E, BHM,
Pennington County, South Dakota**



MAR 20 2008

Rapid City Growth
Management Department