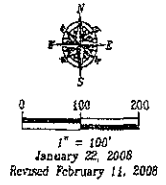
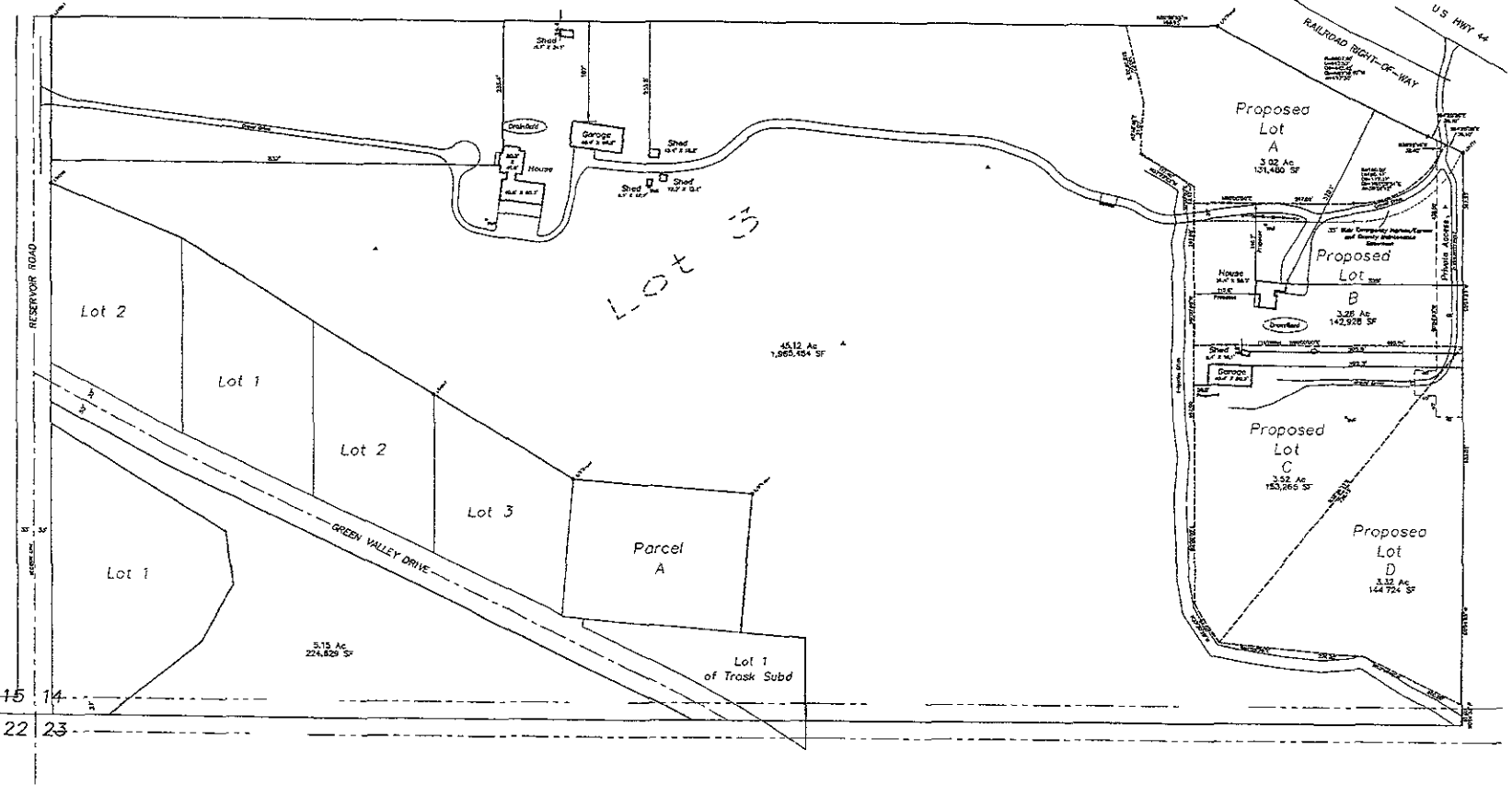


# PRELIMINARY



**LEGEND**  
 ○ = Utility Pole  
 □ = Utility Pedestal



Fisk Land Surveying & Consulting Engineers, Inc.  
 1023 Main Street - P.O. Box 8184  
 Rapid City, South Dakota 57707  
 (605) 371-1112 (In)  
 (605) 371-1112 (Out)

The information herein is unreviewed, unverified, and specific to the date, extent, and purpose of the survey.  
 No warranty or guarantee is expressed or implied in any part for any other purpose of any kind or stated.

Proposed Platting  
 Balance of Lot 3 in the S1/2 SW1/4  
 Section 14, T1N, R8E, B.H.M.,  
 Pennington County, South Dakota

Surveyed by	BLM
Date	1/2/08
Drawn by	RWF
Date	2/01/08
Checked by	RWF
Revisions	2/11/08
	3/13/08

Project No.  
 06-01-01

Layout