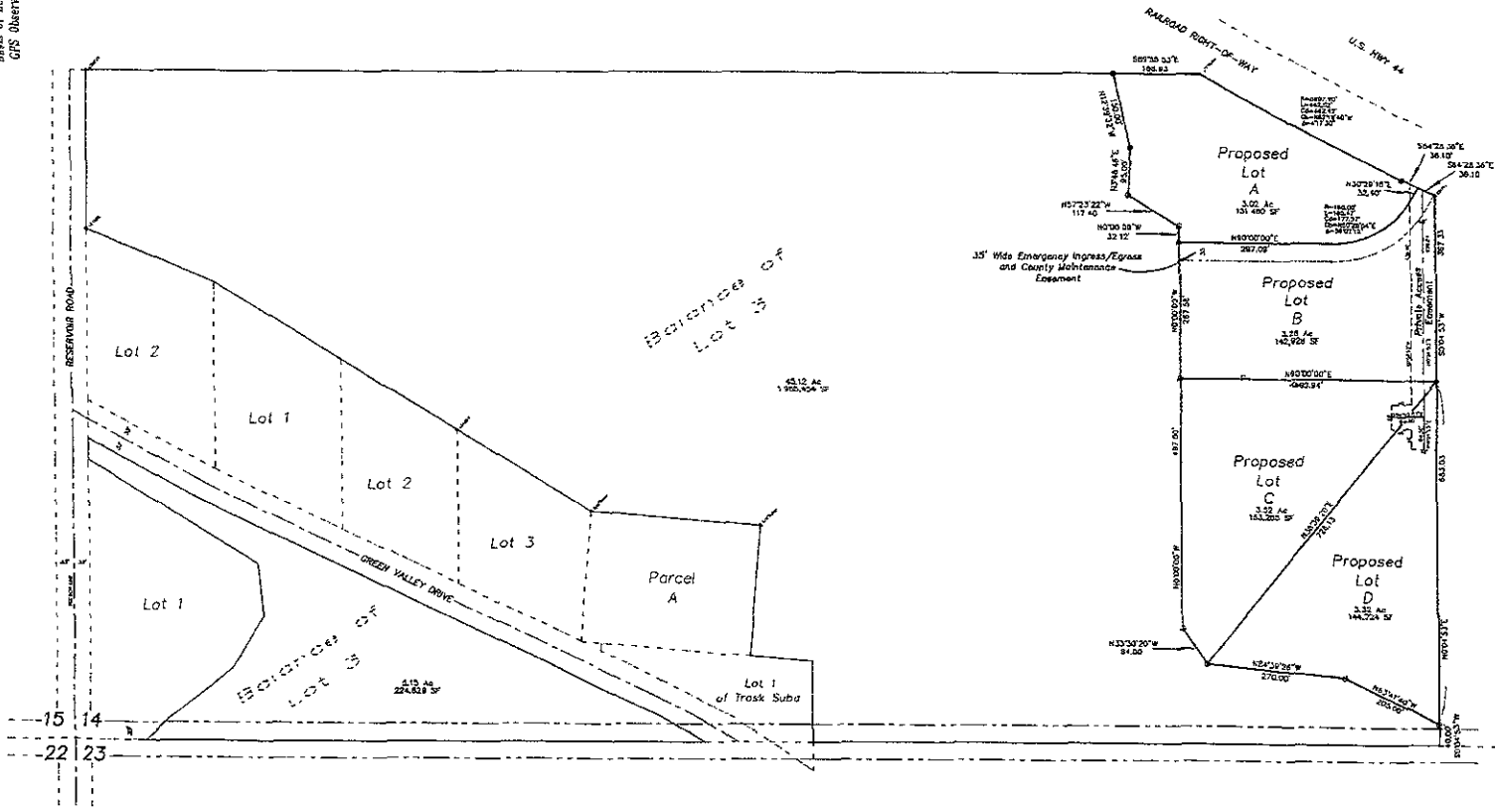




February 4, 2008
Revised February 11, 2008
Revised March 13, 2008
Basis of Bearing
GPS Observation

- = Found Survey Monument as noted
- ⊙ = Set Rebar with cap marked "RW Risk 6565"



Plat of Lots A, B, C, & D of Clemmons Addition
Located in (and formerly a portion of) the Balance of Lot 3
in the S1/2 SW1/4, Section 14, T1N, R8E, B1H.M.
Pennington County, South Dakota

Prepared by
The Land Surveyors &
Consulting Engineers, Inc.
P.O. Box 8154
Sioux Falls, South Dakota 57109
605-339-1533
Project # 08-07-01

PRELIMINARY