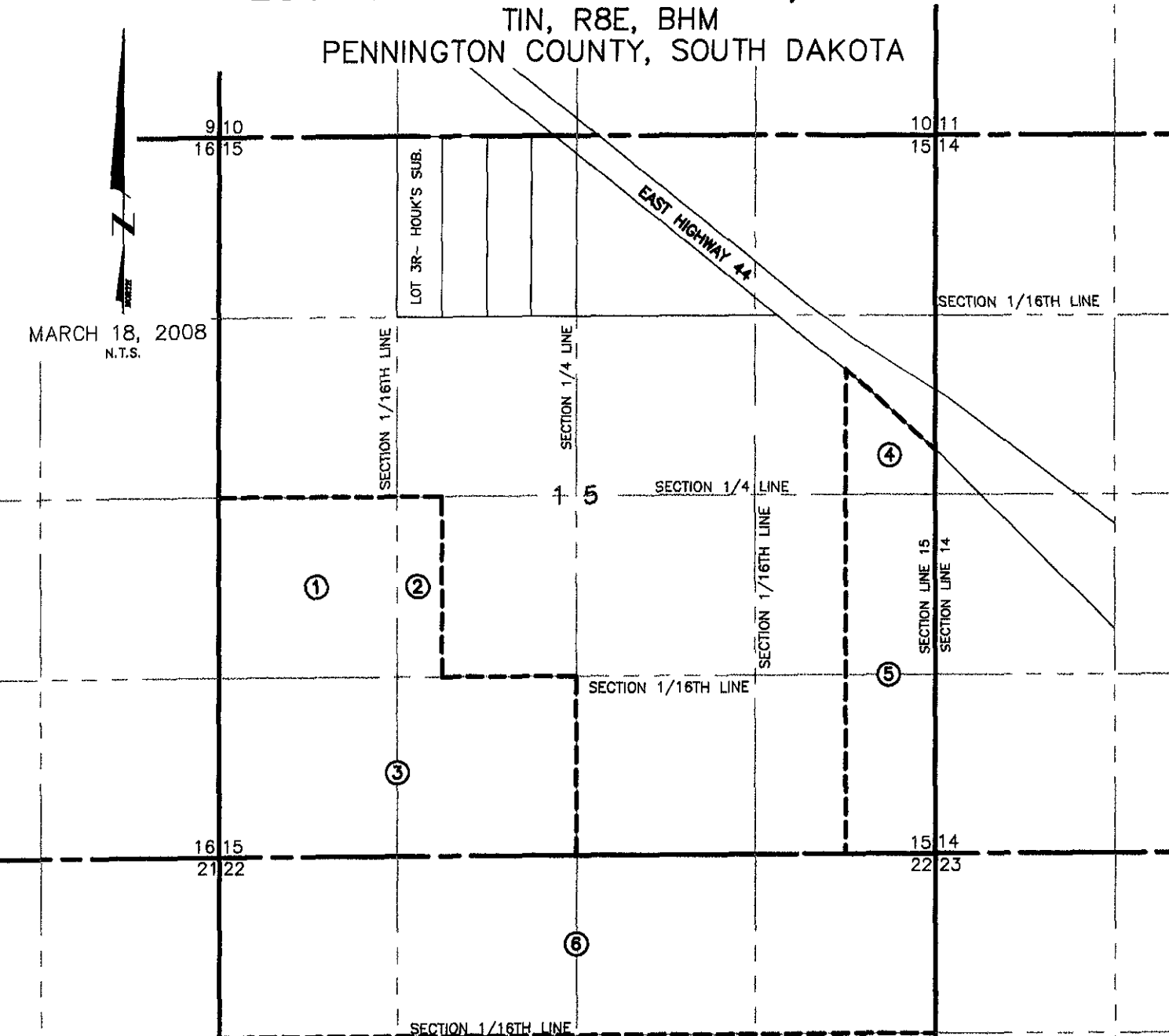


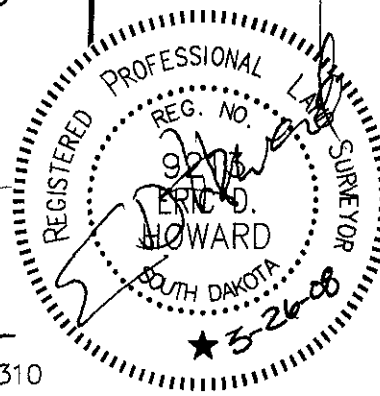
AREA TO BE ANNEXED LOCATED IN SECTION 15, AND 22 T1N, R8E, BHM PENNINGTON COUNTY, SOUTH DAKOTA

MARCH 18, 2008
N.T.S.



AREA TO BE ANNEXED
THIS DOCUMENT.

- ① NW1/4-SW1/4-SECTION 15
- ② W1/2-W1/2-NE1/4-SW1/4-SECTION 15
- ③ S1/2-SW1/4-SECTION 15
- ④ E1/2-SE1/4-NE1/4 SOUTH OF HWY 44-SECTION 15
- ⑤ E1/2-E1/2-SE1/4-SECTION 15
- ⑥ N1/2-N1/2-SECTION 22



Renner & Associates, LLC.



616 Sixth St. * Rapid City, SD 57701 * 605/721-7310

FAX: 605/721-7313 * E-MAIL: Gary@RennerAssoc.com

Spargfish Office: 605/717-0016

CITY HALL 1903