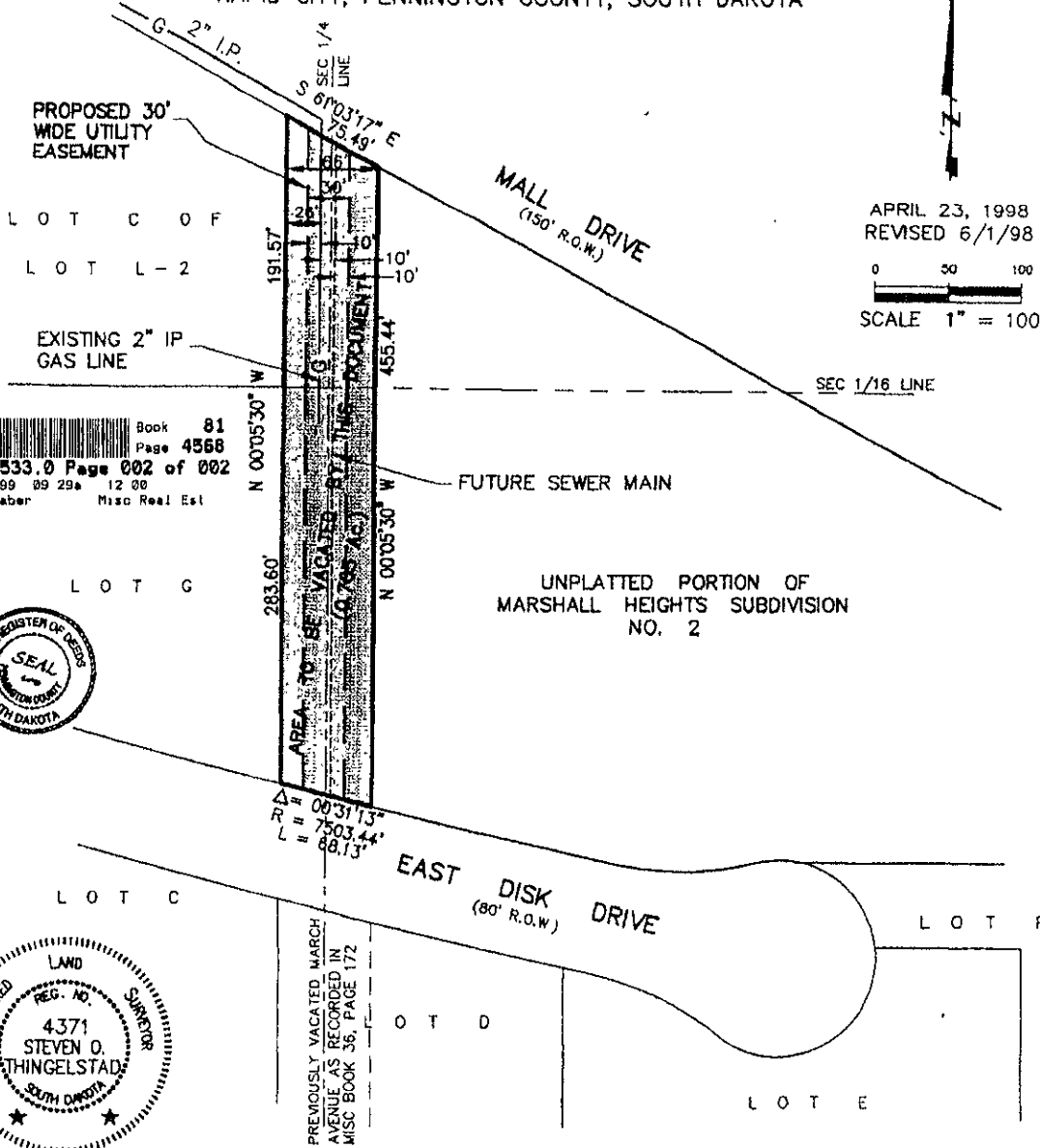


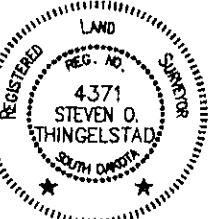
EXHIBIT "A"

MARCH AVENUE R.O.W. VACATION
LOCATED IN SW1/4 OF NE1/4 AND NW1/4 OF NE1/4, AND
LOCATED IN SE1/4 OF NW1/4 AND NE1/4 OF NW1/4 OF
SECTION 30, T2N, R8E, BHM
RAPID CITY, PENNINGTON COUNTY, SOUTH DAKOTA



APRIL 23, 1998
REVISED 6/1/98
0 50 100
SCALE 1" = 100'

Book 81
Page 4568
5-17533.0 Page 002 of 002
01/1989 09 29a 12 00
Lys Faber Misc Real Est



Renner & Sperlich Engineering Co.

616 6th Street, Rapid City, SD 57701 605/342-1191