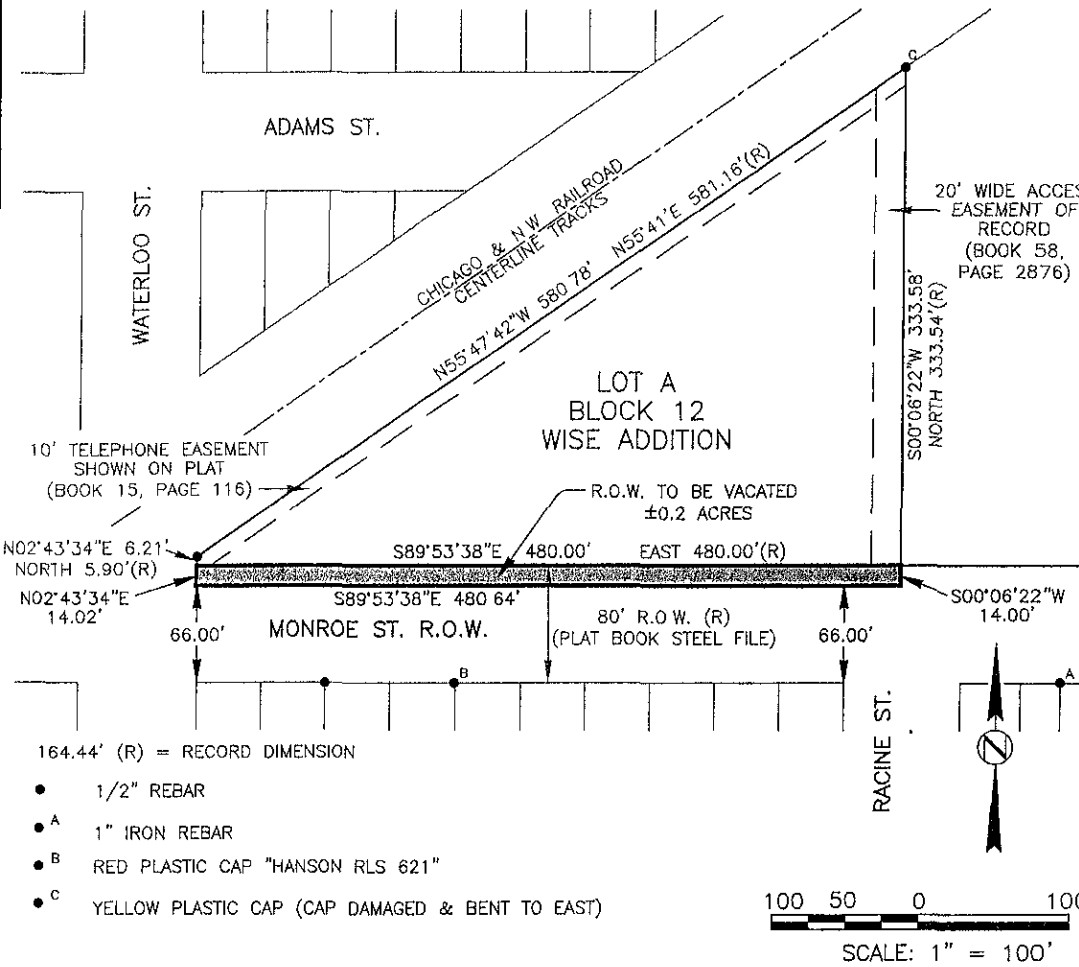


EXHIBIT A
VACATION OF RIGHT-OF-WAY

DESCRIPTION OF MONROE STREET RIGHT-OF-WAY TO BE VACATED: THE NORTH 14 FEET OF
MANROE STREET CONTIGUOUS WITH LOT A OF BLOCK 12 WISE'S ADDITION TO RAPID CITY
LOCATED IN THE SE 1/4 OF THE NW 1/4 OF SECTION 31, T2N, R8E, B.H.M.

RAIPD CITY, PENNINGTON COUNTY, SOUTH DAKOTA

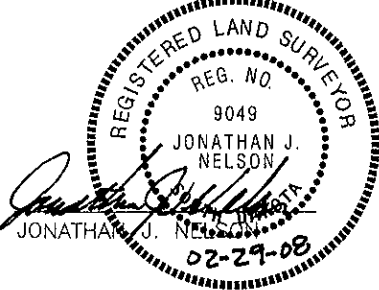
OWNER: CITY OF RAPID CITY



- NOTES:
1. DIMENSIONS SHOWN ARE BASED ON SURVEY DIMENSIONS BETWEEN FOUND MONUMENTS, CALCULATED DIMENSIONS, & RECORD DOCUMENTS.
 2. THE BASIS OF BEARING FOR THIS R.O.W. VACATION IS N55°47'42"W A DISTANCE OF 580.78' FROM A FOUND 1/2" REBAR IN THE NW CORNER OF LOT A TO A FOUND YELLOW PLASTIC CAP LOCATED IN THE NE CORNER OF LOT A
 3. THE NORTH LINE OF SAID VACATION EXTENDS TO THE SOUTH PROPERTY LINE OF SAID LOT A AS DEPICTED HEREON.

SURVEYORS CERTIFICATE:

I, JONATHAN J. NELSON, A REGISTERED LAND SURVEYOR IN THE STATE OF SOUTH DAKOTA, DO HEREBY CERTIFY THAT AT THE DIRECTION OF YOUTH AND FAMILY SERVICES I HAVE PREPARED FROM RECORD DOCUMENTS AND FROM A FIELD SURVEY THE R.O.W. VACATION LOCATION SHOWN HEREON, AND TO THE BEST OF MY KNOWLEDGE AND BELIEF THE DIMENSIONS SHOWN ARE TRUE AND CORRECT.



PREPARED BY:
517 7th street rapid city sd 57701
ph. 605 342 9470 fax. 605.342.2377
www.4front.biz

ARCHITECTURE | ENGINEERING
GIS | SURVEYING

FOURFRONT
DESIGN INC

DRAWN BY J. NELSON DATE 02-29-08
CHECKED BY J. NELSON DATE 02-29-08