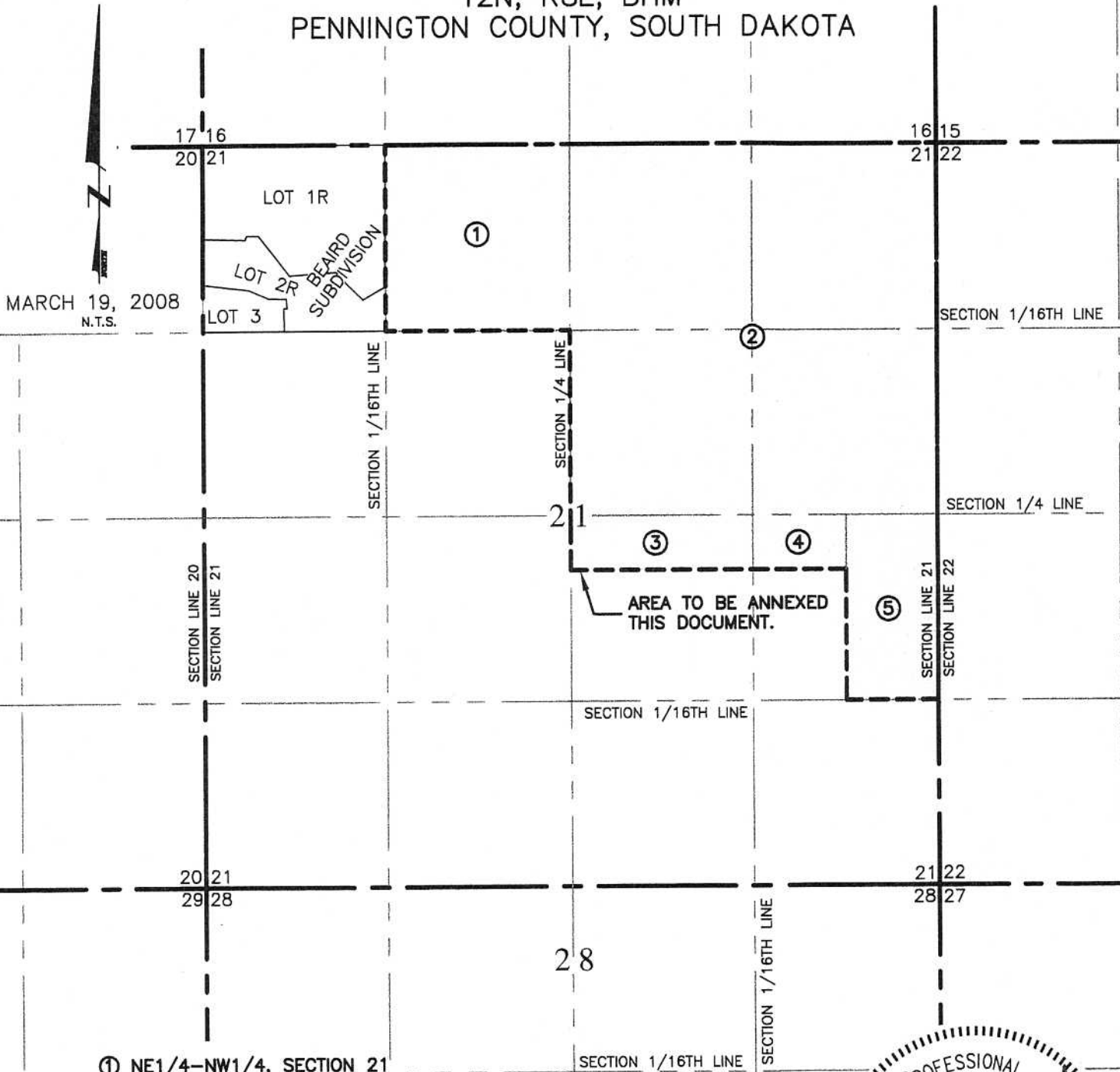


# AREA TO BE ANNEXED LOCATED IN SECTION 21

T2N, R8E, BHM  
PENNINGTON COUNTY, SOUTH DAKOTA



- ① NE1/4-NW1/4, SECTION 21
- ② NE1/4, SECTION 21
- ③ N1/2-N1/2-NW1/4-SE1/4, SECTION 21
- ④ N1/2-N1/2-W1/2-NE1/4-SE1/4, SECTION 21
- ⑤ E1/2-NE1/4-SE1/4, SECTION 21



## Renner & Associates, LLC.

616 Sixth St. \* Rapid City, SD 57701 \* 605/721-7310

FAX: 605/721-7313 \* E-MAIL: Gary@RennerAssoc.com

Spearfish Office: 605/717-0016

