

**Plat of Lots A, B and C of Lot 1, Block 1, Hilltop Business Park Subdivision**  
 Formerly all of Lot 1, Block 1, Hilltop Business Park Subdivision  
 located in the NE1/4 of SECTION 4, T1N, R8E, BHM,  
 Rapid City, Pennington County, South Dakota

**07SV073**

Prepared by:  
 Fisk Land Surveying & Consulting Engineers, Inc  
 P.O. Box 8154  
 Rapid City, SD 57708  
 (605) 348-1538  
 Project # 05-09-03



1" = 100'  
 November 21, 2007

Basis of Bearings  
 Solar Observation

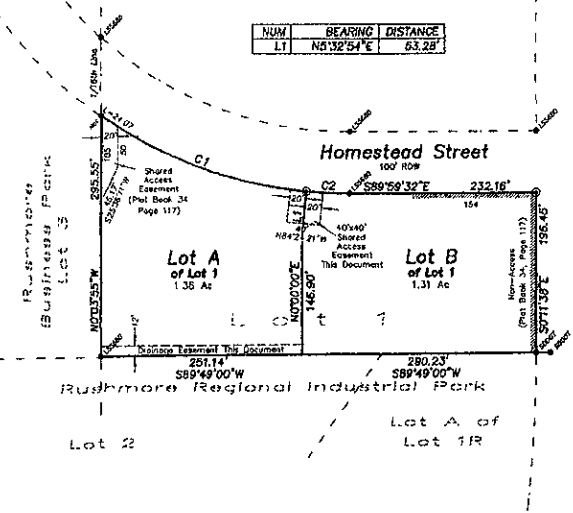
- = Found Survey Monument as noted
- ⊙ = Sat Rebar with cap marked "RW Fisk 6565"

8' Utility and Minor Drainage Easements on the Interior sides of all lot lines

All major drainage easements shown hereon shall be kept free of all obstructions including but not limited to buildings walls, fences, hedges, trees & shrubs. These easements grant to all public authorities the right to construct, operate, maintain, inspect, and repair such improvements and structures as it deems expedient to facilitate drainage from any source.

NUM	DELTA	ARC	RADIUS	BEARING	DISTANCE
C1	20°27'33"	276.62'	538.00'	S86°43'18"E	273.56'
C2	5°34'23"	52.33'	538.00'	S87°14'18"E	52.31'

NUM	BEARING	DISTANCE
LT	N83°25'54"E	63.28'



Sec. 4  
 Sec. 3  
 SECTION LINE  
 Elk Vale Road  
 250' ROW

Lot 2  
 Lot 1  
 RUSHMORE REGIONAL INDUSTRIAL PARK

**PRELIMINARY**