

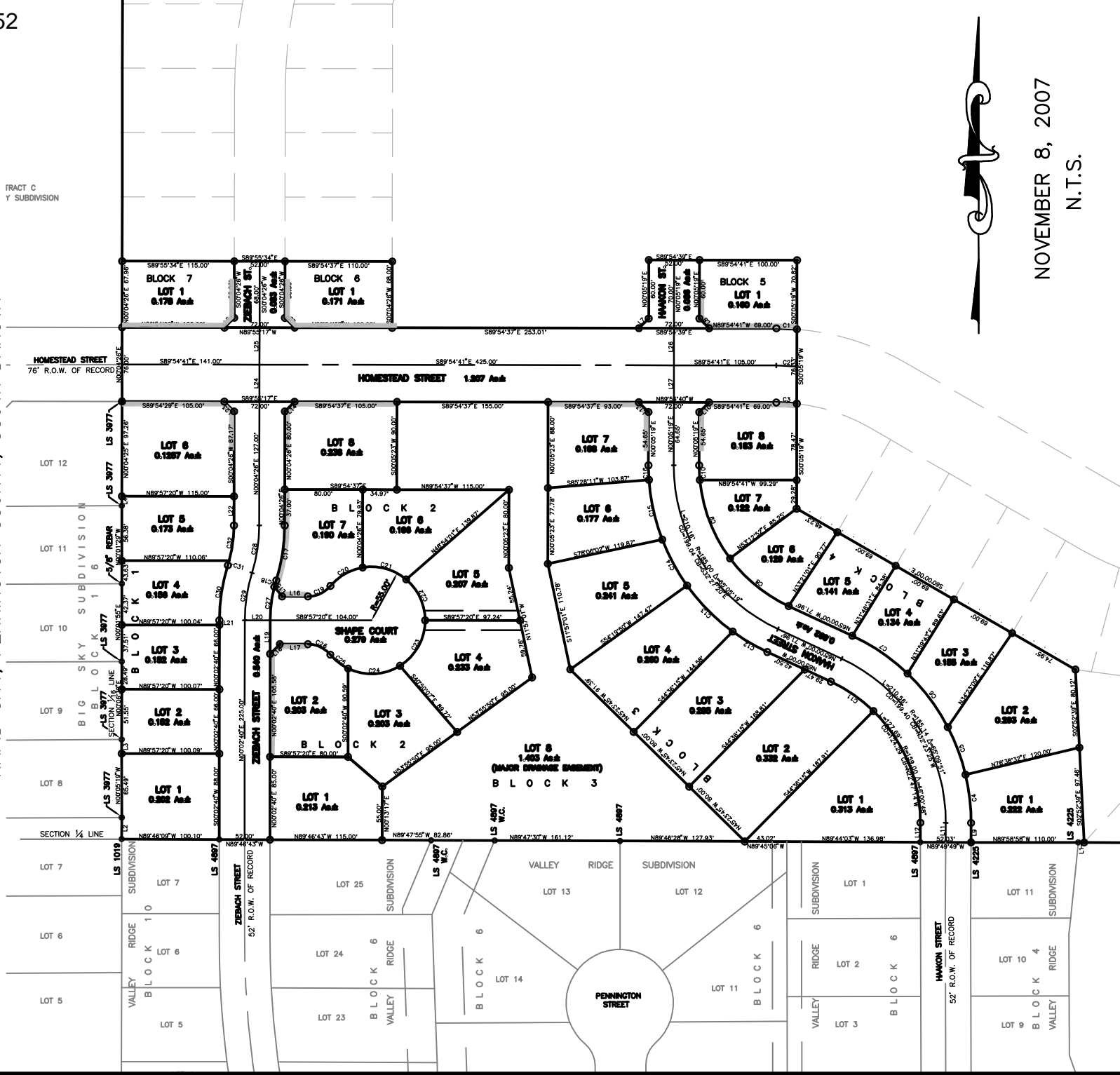
PLAT OF

LOTS 1 THROUGH 6 OF BLOCK 1, LOTS 1 THROUGH 8 OF BLOCK 2, LOTS 1 THROUGH 8 OF BLOCK 3, LOTS 1 THROUGH 8 OF BLOCK 4, LOT 1 OF BLOCK 5, LOT 1 OF BLOCK 6, AND LOT 1 OF BLOCK 7, HOMESTEAD SUBDIVISION

(formerly a portion of the SE1/4 of the NE1/4 of Section 3) LOCATED IN THE SE1/4 OF THE NE1/4 SECTION 3, T1N, R8E, B.H.M.,

RAPID CITY, PENNINGTON COUNTY, SOUTH DAKOTA

07PL152



NOVEMBER 8, 2007
N.T.S.