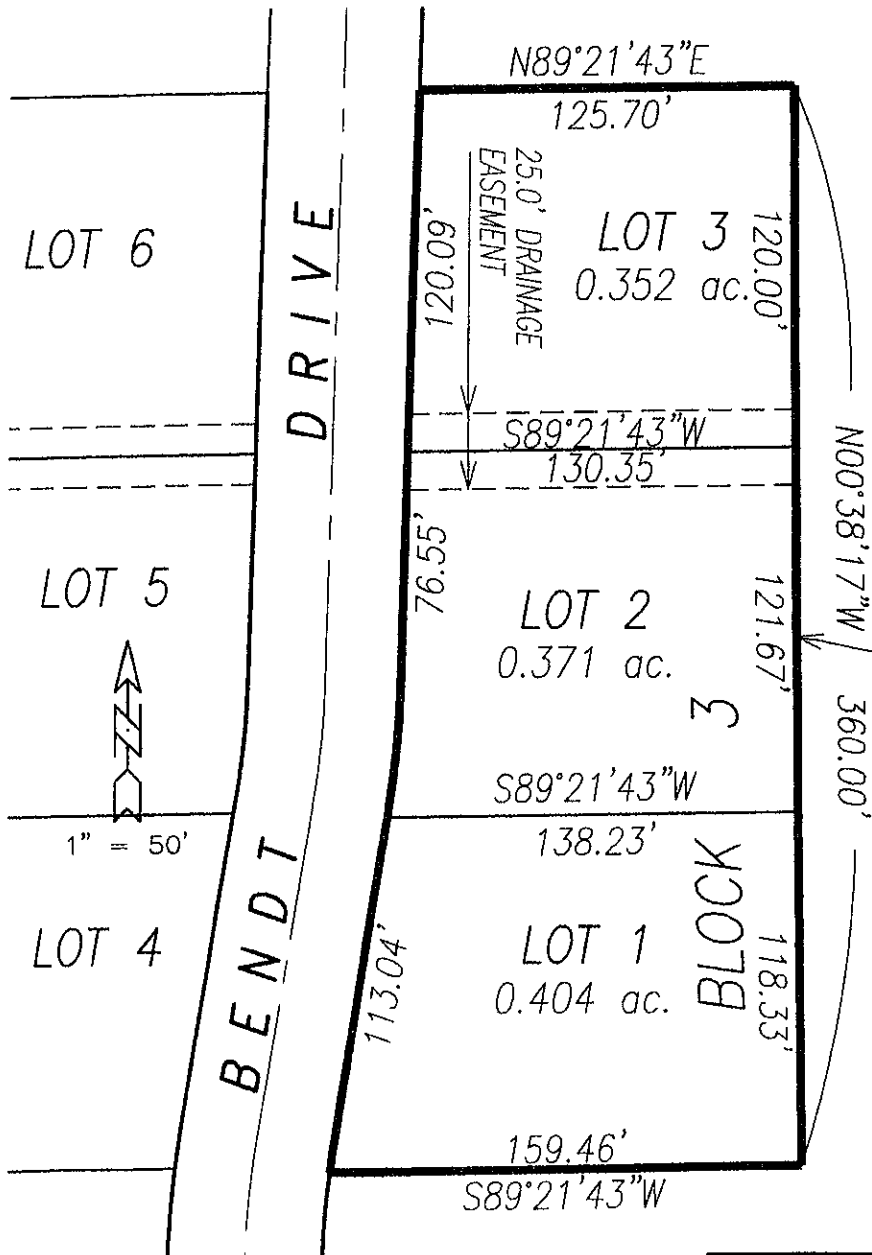


Exhibit of Lots 1, 2 & 3, Block 3 of Stoney Creek South Subdivision

Current Zoning = LDR

Proposed Zoning = Office Commercial



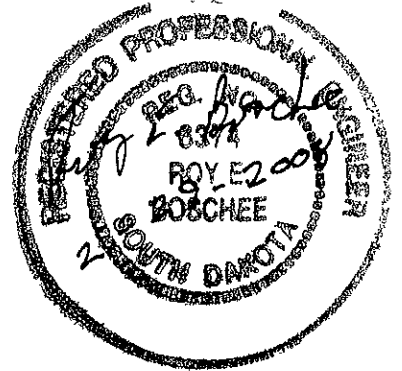
Lot 1 - 0.404 Ac.
 Lot 2 - 0.371 Ac.
 Lot 3 - 0.352 Ac.
 Total = 1.127 Ac.

RECEIVED

FEB 29 2008

Rapid City Growth
Management Department

Lots to be
Rezoned



Boschee Engineering
 429 Kansas City Street, Suite 16
 Rapid City, South Dakota, 57701
 (605) 342-8747
 email: boschee_eng@midconetwork.com