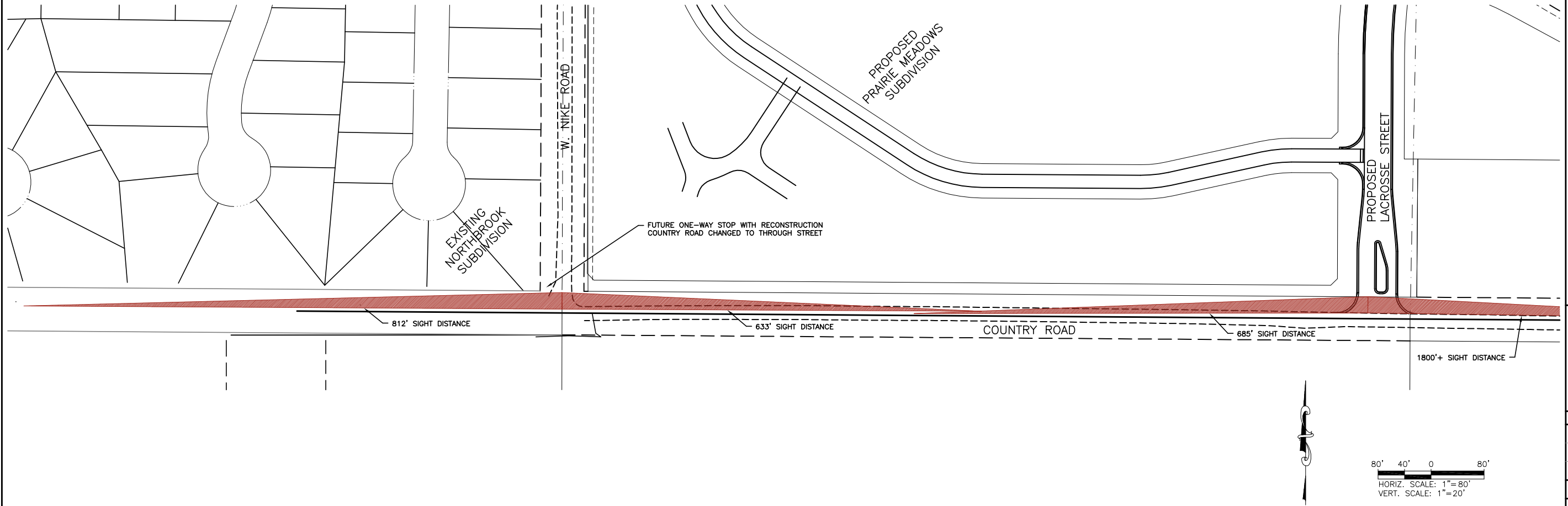


**PRELIMINARY FOR REVIEW ONLY**

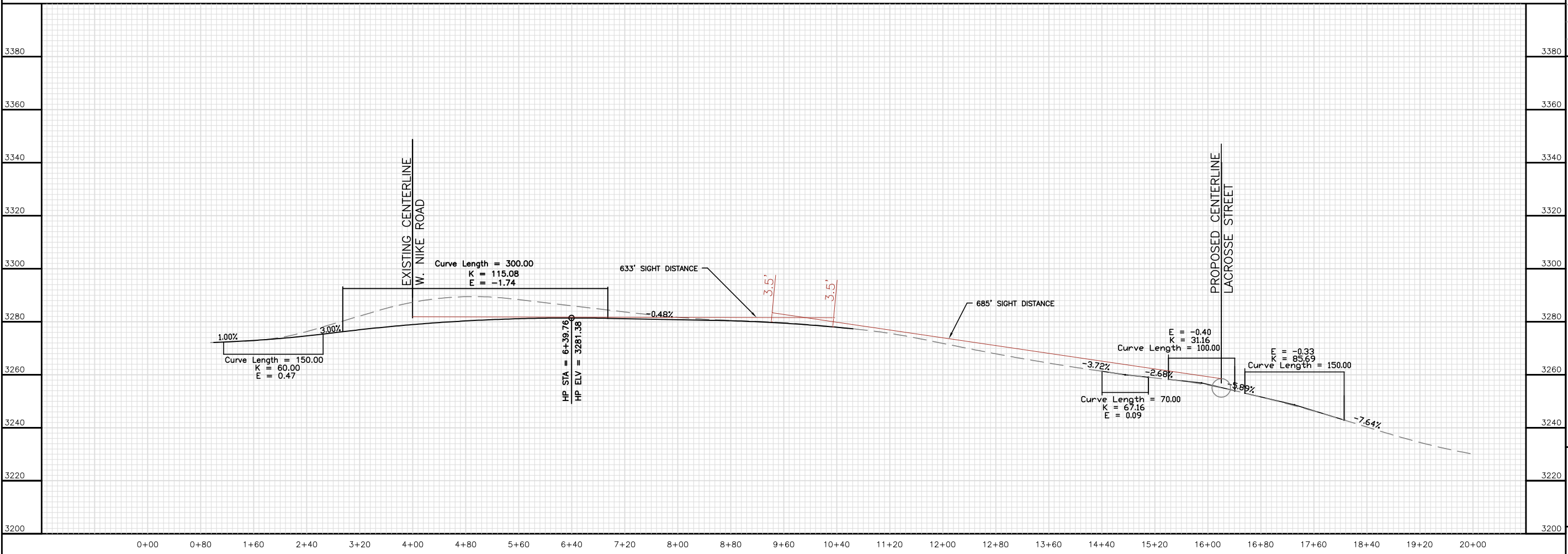
Scale:	AS NOTED
Designed By:	Drawn By: TMT
Design Date:	Print Date: 03/08
Internal Job No: 07-0483	
Surveyed By: RENNEN	Survey Date: 01/08
Revisions:	

**PRAIRIE MEADOWS SUBDIVISION INTERSECTION RECONSTRUCTION**  
 Sheet Title:  
 COUNTRY ROAD  
 PRELIMINARY  
 PLAN AND PROFILE  
 Sheet: **1 of 2**



**PRELIMINARY FOR REVIEW ONLY**

Scale:	AS NOTED
Designed By:	Drawn By: TMT
Design Date:	Print Date: 03/08
Internal Job No: 07-0483	Surveyed By: RENNER
Surveyed By: RENNER	Survey Date: 01/08
Revisions:	



**PRAIRIE MEADOWS SUBDIVISION INTERSECTION RECONSTRUCTION**

distance (See Table 3-2) and passing sight distance (when applicable) must be provided. Minimum horizontal curve radius shall be provided in accordance with Figure 3-1.

TABLE 3-2

## Minimum Stopping Sight Distance (Wet Pavements)

Design Speed (mph) / (Kph)	Stopping Sight Distance (Rounded for Design) (ft) / (M)	K Value* for Crest Vertical Curves (Rounded)	K Value* for Sag Vertical Curves (Rounded)
20/32	125-125/38	10-10	20-20
25/40	150-150/46	20-20	30-30
30/48	200-200/61	30-30	40-40
35/56	225-250/69-76	40-50	50-50
40/64	275-325/84-99	60-80	60-70
45/72	325-400/99-122	80-120	70-90
50/80	400-475/122-145	110-160	90-110
55/88	450-550/137-168	150-220	100-130

\*K value is a coefficient by which the algebraic difference in grade may be multiplied to determine the length in feet of the vertical curve which will provide minimum sight distance.

Source: A Policy on Geometric Design of Highways and Streets (1990 ed)

# SIGHT TRIANGLE REQUIREMENT STOP-CONTROLLED INTERSECTION

<sup>1</sup> DISTANCE "a" CALCULATED PER AASHTO, CASE IIIB. ASSUMES FLAT GRADES AT INTERSECTION. WHERE THE GRADES OF THE INTERSECTION LEGS ARE OTHER THAN FLAT, CORRECTIONS SHOULD BE MADE TO THE SIGHT DISTANCES PER AASHTO TABLE IX-9.

<sup>2</sup> USE TRUCK SIGHT DISTANCES IN COMMERCIAL AND INDUSTRIAL ZONED AREAS.

OPERATING SPEED (MPH)		25	30	35	40	45	50
DISTANCE $a^1$ (FEET)	TRUCK <sup>2</sup>	490	645	820	1020	1340	1710
	PASSENGER CAR	300	375	470	580	700	840

