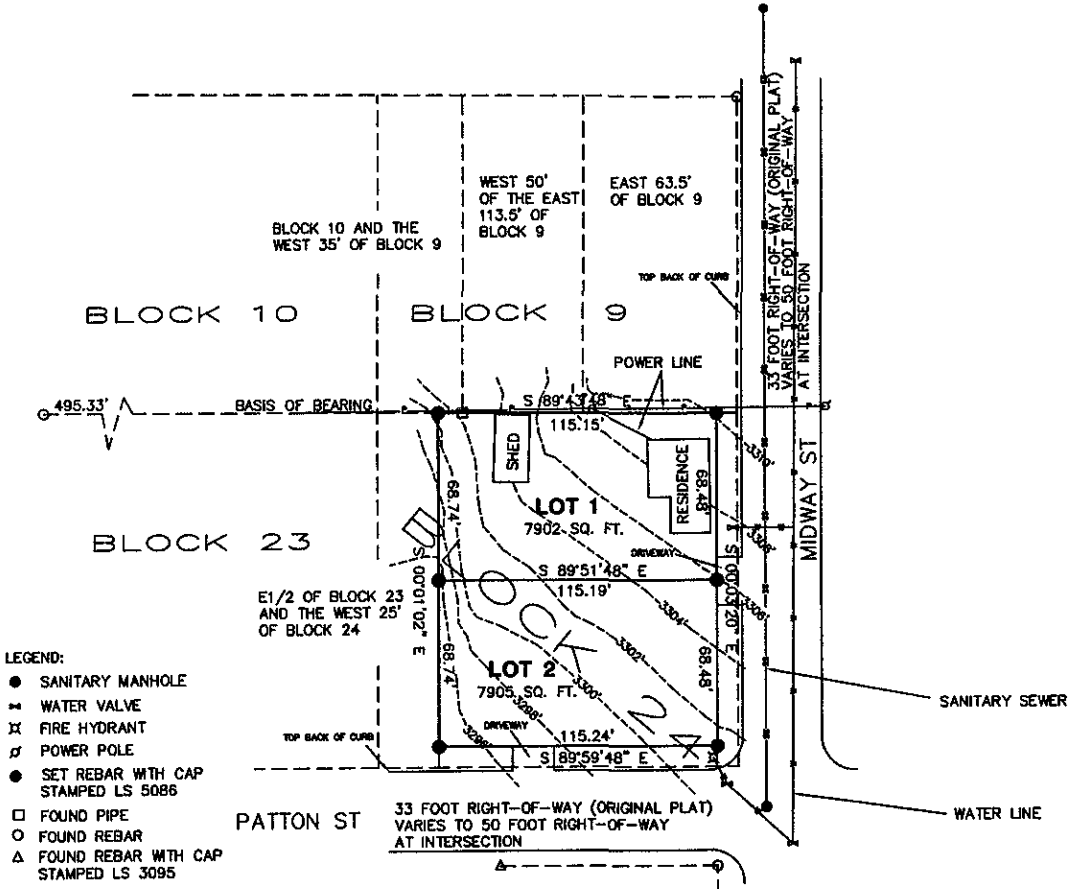


PRELIMINARY PLAT OF LOTS 1 AND 2 OF BLOCK 24,
 A SUBDIVISION OF BLOCK 24
 EXCEPTING THE WEST 25 FEET,
 THE SOUTH 8 1/2 FEET AND THE EAST 8 1/2 FEET
 ALL LOCATED IN MAHONEY ADDITION, SECTION 25,
 ALL LOCATED IN MAHONEY ADDITION,
 SE1/4 OF SECTION 25, T.2N., R.7E., B.H.M.,
 RAPID CITY, PENNINGTON COUNTY, SOUTH DAKOTA.



- LEGEND:**
- SANITARY MANHOLE
 - ≡ WATER VALVE
 - ⊕ FIRE HYDRANT
 - ⚡ POWER POLE
 - SET REBAR WITH CAP STAMPED LS 5086
 - FOUND PIPE
 - FOUND REBAR
 - △ FOUND REBAR WITH CAP STAMPED LS 3095

- NOTES:**
1. ALL AREAS ARE MORE OR LESS.
 2. CONTOURS ARE TWO FOOT.
 3. ADJACENT TO ALL LOT LINES THIS PLAT DEDICATES AN 8' UTILITY AND MINOR DRAINAGE EASEMENT

VICINITY MAP 1" = 800' +/-

