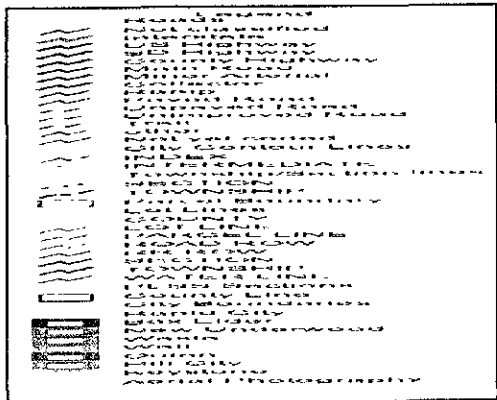
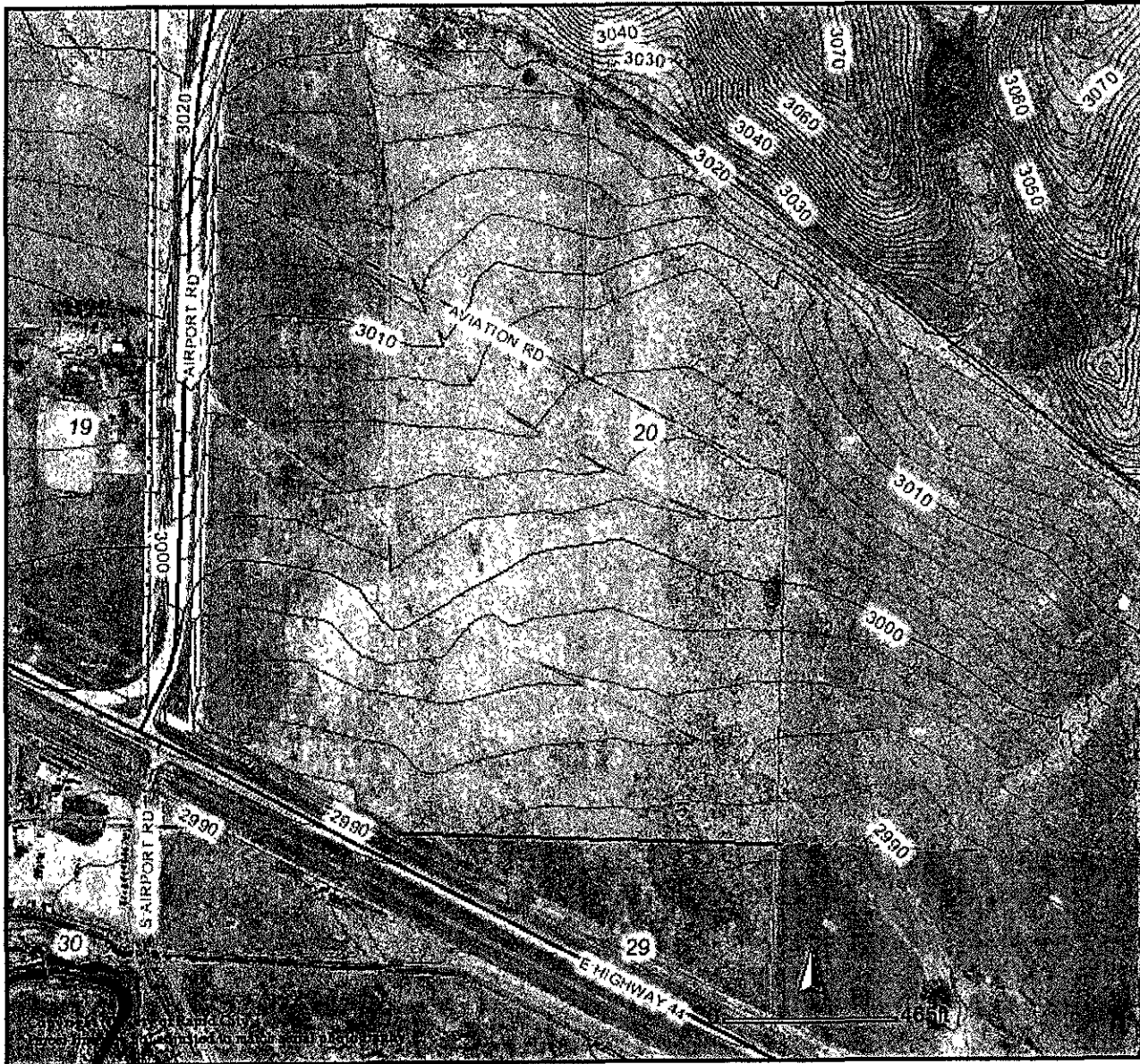


MERLIN STROMER SITE TOPOGRAPHY



DISCLAIMER

DISCLAIMER This GIS data is provided 'as is' without warranty or any representation of accuracy, timeliness or completeness. The burden for determining accuracy, completeness, timeliness, merchantability and fitness for or the appropriateness for use rests solely on the requester. Rapid City and Pennington County make no warranties, express or implied, as to the use of the data. The implied warranties of merchantability or fitness for a particular purpose are specifically disclaimed. The requester acknowledges and accepts the limitations of the data, including the fact that the data is dynamic and is in a constant state of maintenance, correction and update. This document does not represent a legal survey of the land. There are no restrictions on distribution of printed Rapid City/Pennington County maps other than the City of Rapid City copyright/credit notice be legible on the print. The User agrees to recognize and honor in perpetuity the copyrights and other proprietary claims for the GIS Product File(s) established or produced by the City of Rapid City or the vendors furnishing said items to the City of Rapid City.

RECEIVED

JAN 25 2008

RECEIVED

JAN 25 2008