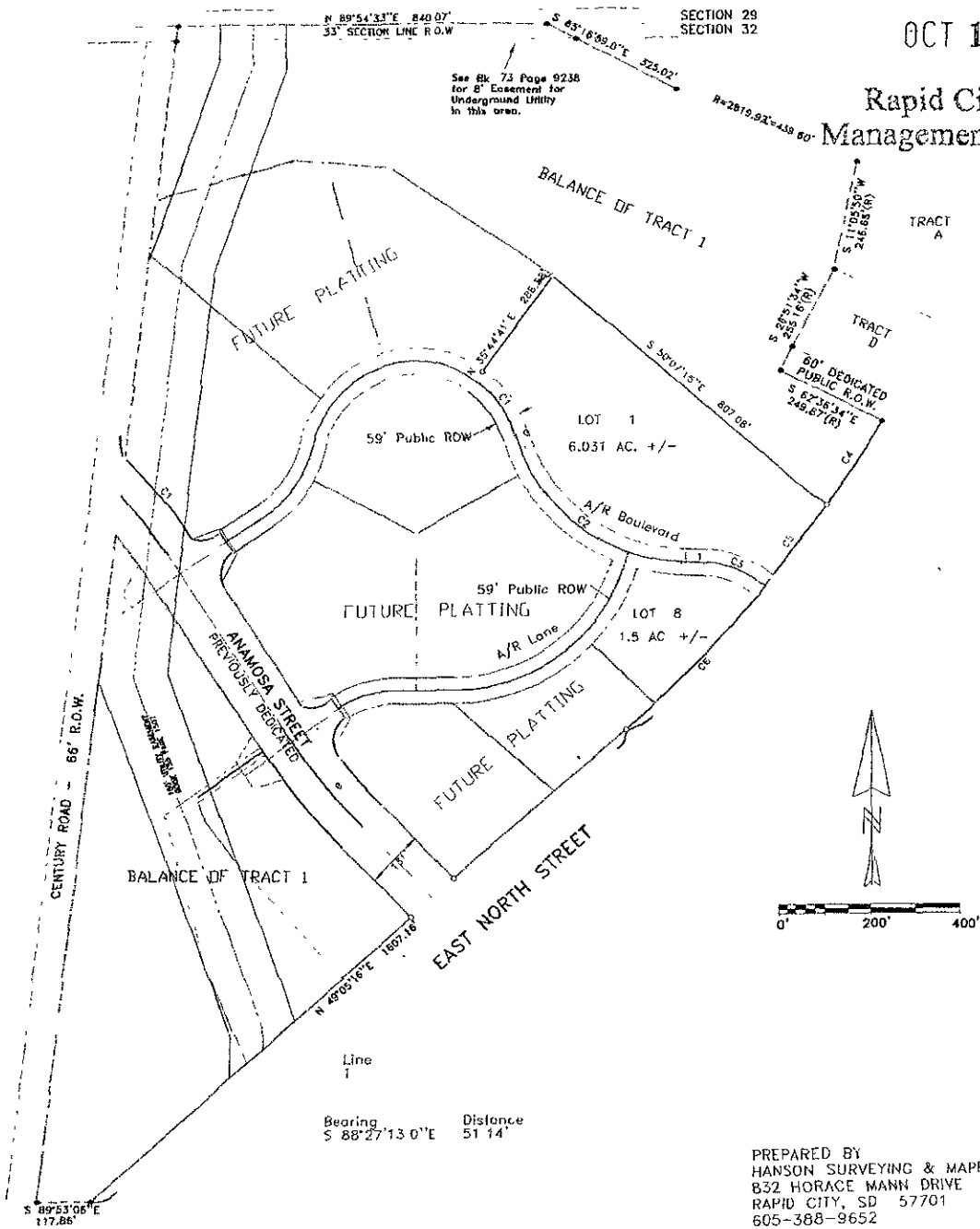


LOTS 1 AND 8 OF ANAMOSA CROSSING SUBDIVISION  
 FORMERLY A PORTION OF TRACT 1 OF CENTURY 21 SUBDIVISION  
 LOCATED IN NW1/4 OF SECTION 32, T2N, R8E, B.H.M.  
 RAPID CITY, PENNINGTON COUNTY, SOUTH DAKOTA

RECEIVED

OCT 12 2007

Rapid City Growth Management Department



PREPARED BY  
 HANSON SURVEYING & MAPPING  
 832 HORACE MANN DRIVE  
 RAPID CITY, SD 57701  
 605-388-9652

OCTOBER 1, 2007

Curve	Delta Angle	Radius	Arc	Tangent	Chord	Chord Bearing
1	37°15'18.0"	240.00	156.05	80.90	153.32	S 35°37'59.9"E
2	71°27'12.0"	400.00	498.84	287.71	467.14	S 57°43'37.0"E
3	38°12'40.7"	277.49	151.72	76.80	148.87	S 69°20'54.7"E
4	4°38'34.8"	2776.56	225.00	112.56	224.94	S 32°48'11.7"W
5	4°37'54.8"	2776.56	224.46	112.29	224.40	S 37°26'26.4"W
6	9°19'52.4"	2776.56	452.19	226.60	451.69	S 44°25'19.8"W