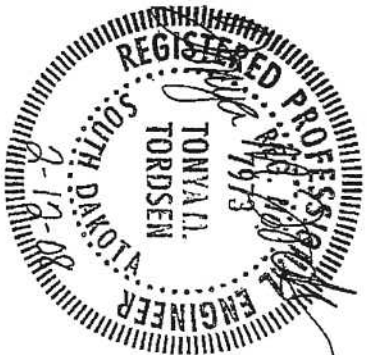




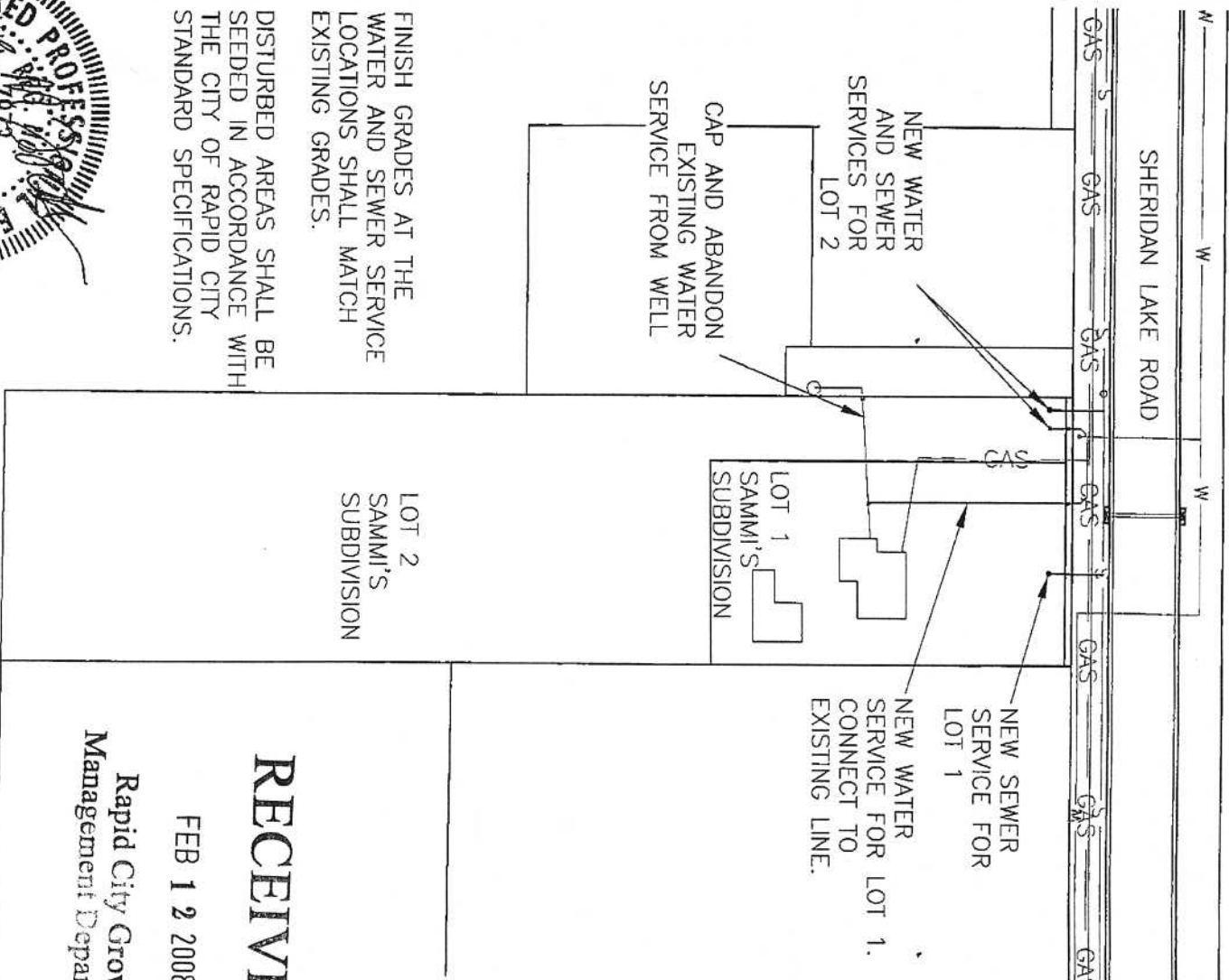
08PL002

DREAM DESIGN INTERNATIONAL, INC.

CIVIL ENGINEERING • LANDSCAPE ARCHITECTURE
LAND DEVELOPMENT • CONSTRUCTION ADMINISTRATION



FINISH GRADES AT THE WATER AND SEWER SERVICE LOCATIONS SHALL MATCH EXISTING GRADES.
DISTURBED AREAS SHALL BE SEEDED IN ACCORDANCE WITH THE CITY OF RAPID CITY STANDARD SPECIFICATIONS.



LOT 2
SAMMI'S
SUBDIVISION

LOT 1
SAMMI'S
SUBDIVISION

NEW SEWER SERVICE FOR LOT 1
NEW WATER SERVICE FOR LOT 1. CONNECT TO EXISTING LINE.

NEW WATER AND SEWER SERVICES FOR LOT 2
CAP AND ABANDON EXISTING WATER SERVICE FROM WELL

SHERIDAN LAKE ROAD

RECEIVED

FEB 12 2008

Rapid City Growth
Management Department

SEWER AND WATER SERVICES

FOR

LOT 1 AND 2

SAMMI'S SUBDIVISION

LOCATED IN NE 1/4 OF NE 1/4

SECTION 21, T14N, R7E, BHM

RAPID CITY, SOUTH DAKOTA

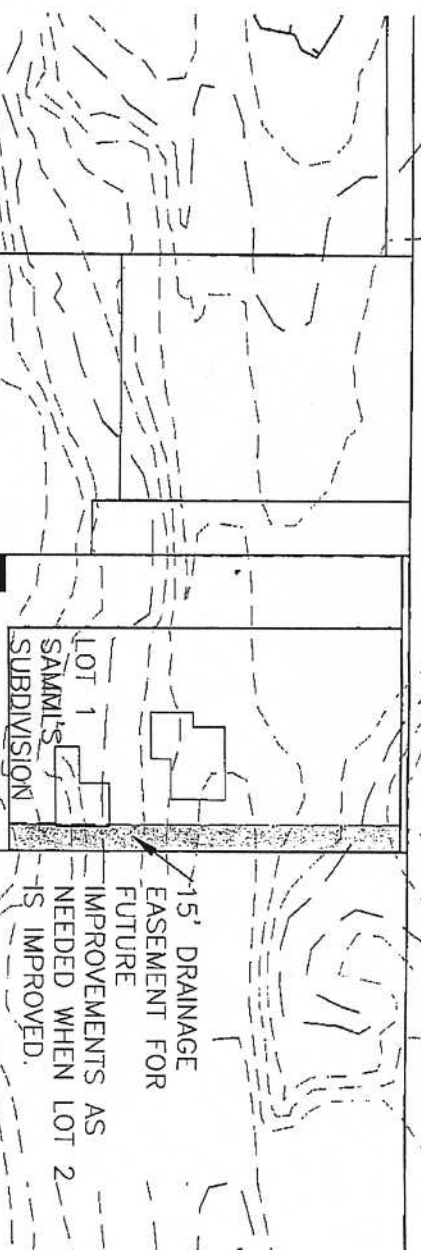
FEBRUARY 12, 2008



RECEIVED

FEB 12 2008

SHERIDAN LAKE ROAD 3470
Rapid City Growth
Management Department



ASSUMED % IMPERVIOUS = 15
 TOTAL RUNOFF AREA = 1.6 ACRES
 Q = CIA
 Q = .15 X 9.48 X 1.6 ACRES
 Q = 2.28 CFS

FUTURE CHANNEL SIZE IS
 DEPENDENT ON THE ACTUAL
 BUILDING FOOTPRINT.

A 15' WIDE EASEMENT WILL ALLOW
 FOR APPROXIMATELY 7.9 CFS IN A
 V-DITCH SECTION AT 1.5% SLOPE
 WITH 1' OF FREEBOARD.

POTENTIAL STORMWATER RUNOFF
 FOR

DRAINAGE EASEMENT
 LOT 1 AND 2
 SAMMI'S SUBDIVISION
 LOCATED IN NE1/4 OF NE4
 SECTION 21, T1N, R7E, BHM
 RAPID CITY, SOUTH DAKOTA
 FEBRUARY 12, 2008



08PL002

DREAM DESIGN INTERNATIONAL, INC.

CIVIL ENGINEERING • LANDSCAPE ARCHITECTURE
LAND DEVELOPMENT • CONSTRUCTION ADMINISTRATION



SHERIDAN LAKE ROAD

WIDEN GRAVEL
DRIVE ON NORTH
EDGE AND REMOVE
EXISTING DRIVE
AREA ON LOT 2.

FUTURE DRIVE
LOCATION FOR
LOT 2

LOT 1
SAMMI'S
SUBDIVISION

WIDEN GRAVEL
DRIVE ON NORTH
EDGE.

SHARED APPROACH
EASEMENTS (20'
WIDE X 40' LONG
PER LOT)

APPROXIMATE DRIVE
LOCATIONS PER
SURVEYOR

LOT 2
SAMMI'S
SUBDIVISION



RECEIVED

FEB 12 2008

Rapid City Growth
Management Department

DRIVEWAY MODIFICATIONS
FOR

LOT 1 AND 2
SAMMI'S SUBDIVISION
LOCATED IN NE¼ OF NE¼
SECTION 21, T1N, R7E, BHM
RAPID CITY, SOUTH DAKOTA
FEBRUARY 12, 2008



08PL002

DREAM DESIGN INTERNATIONAL, INC.

CIVIL ENGINEERING • LANDSCAPE ARCHITECTURE
LAND DEVELOPMENT • CONSTRUCTION ADMINISTRATION