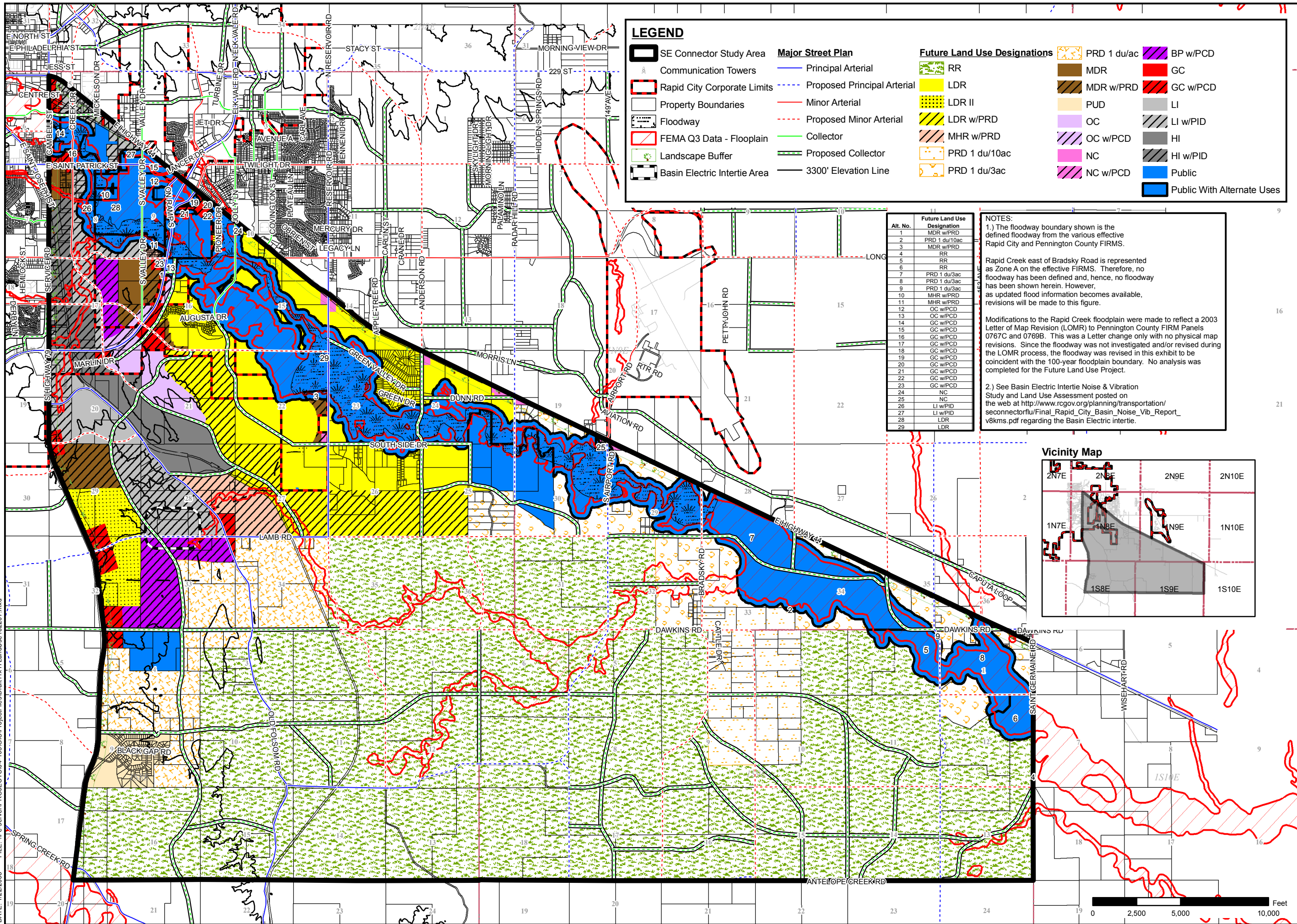


DATE: 1/22/2008 FILE: \\fe-server\PROJECT\S04-103\GIS\ProjectFiles\Draft1171_LandUse 102207.mxd



LEGEND

- SE Connector Study Area
- Communication Towers
- Rapid City Corporate Limits
- Property Boundaries
- Floodway
- FEMA Q3 Data - Floodplain
- Landscape Buffer
- Basin Electric Intertie Area
- Major Street Plan**
- Principal Arterial
- Proposed Principal Arterial
- Minor Arterial
- Proposed Minor Arterial
- Collector
- Proposed Collector
- 3300' Elevation Line
- Future Land Use Designations**
- RR
- LDR
- LDR II
- LDR w/PRD
- MHR w/PRD
- PRD 1 du/10ac
- PRD 1 du/3ac
- PRD 1 du/ac
- MDR
- MDR w/PRD
- PUD
- OC
- OC w/PCD
- NC
- NC w/PCD
- BP w/PCD
- GC
- GC w/PCD
- LI
- LI w/PID
- HI
- HI w/PID
- Public
- Public With Alternate Uses

Alt. No.	Future Land Use Designation
1	MDR w/PRD
2	PRD 1 du/10ac
3	MDR w/PRD
4	RR
5	RR
6	RR
7	PRD 1 du/3ac
8	PRD 1 du/3ac
9	PRD 1 du/3ac
10	MHR w/PRD
11	MHR w/PRD
12	OC w/PCD
13	OC w/PCD
14	GC w/PCD
15	GC w/PCD
16	GC w/PCD
17	GC w/PCD
18	GC w/PCD
19	GC w/PCD
20	GC w/PCD
21	GC w/PCD
22	GC w/PCD
23	GC w/PCD
24	NC
25	NC
26	LI w/PID
27	LI w/PID
28	LDR
29	LDR

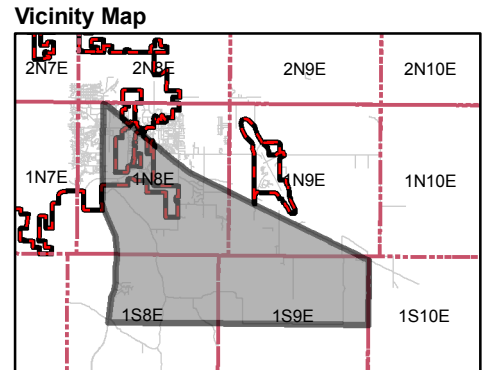
NOTES:


1.) The floodway boundary shown is the defined floodway from the various effective Rapid City and Pennington County FIRMS.

Rapid Creek east of Bradsky Road is represented as Zone A on the effective FIRMS. Therefore, no floodway has been defined and, hence, no floodway has been shown herein. However, as updated flood information becomes available, revisions will be made to this figure.


Modifications to the Rapid Creek floodplain were made to reflect a 2003 Letter of Map Revision (LOMR) to Pennington County FIRM Panels 0767C and 0769B. This was a Letter change only with no physical map revisions. Since the floodway was not investigated and/or revised during the LOMR process, the floodway was revised in this exhibit to be coincident with the 100-year floodplain boundary. No analysis was completed for the Future Land Use Project.

2.) See Basin Electric Intertie Noise & Vibration Study and Land Use Assessment posted on the web at http://www.rcgov.org/planning/transportation/seconnector/fu/Final_Rapid_City_Basin_Noise_Vib_Report_v8kms.pdf regarding the Basin Electric intertie.






Prepared For:



Civil Engineering • Water Resources • Transportation • Land Surveying
729 East Watertown St, Rapid City, SD 57701 • Phone: (605) 343-3311



SE CONNECTOR FUTURE LAND USE PLAN

DRAFT 01/21/08

RAPID CITY, SD

Sheet Title:
SE CONNECTOR FUTURE LAND USE PLAN

Sheet:
1