

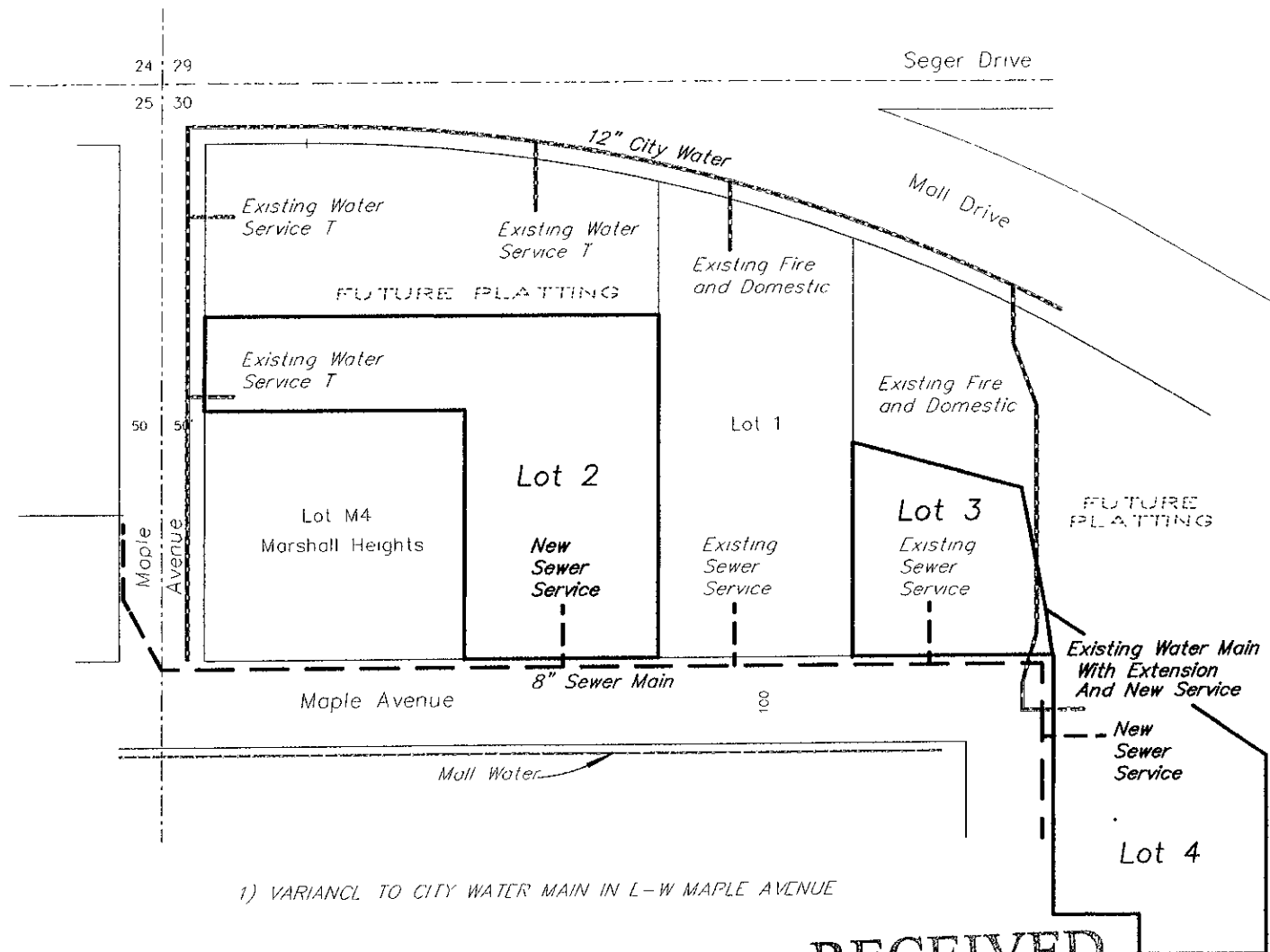
# MASTER UTILITY PLAN 07SV062

## LOTS 2, 3 AND 4 OF LJS SUBDIVISION

(FORMERLY A PORTION OF THE UNPLATTED BALANCE OF THE NW1/4 OF SECTION 30, T2N, R8E, BHM)  
LOCATED IN THE NW1/4 OF SECTION 30, T2N, R8E, BHM,  
RAPID CITY, PENNINGTON COUNTY, SOUTH DAKOTA



1"=200'



RECEIVED

OCT 26 2007

Rapid City Growth  
Management Department