

PLAT OF  
**LOTS 1 THROUGH 4, AND LOT 6**  
**MARKET SQUARE SUBDIVISION,**

**AND SANITARY SEWER EASEMENT, MAJOR DRAINAGE EASEMENT, AND ACCESS EASEMENT**  
**OF LOT B OF LOT 3 OF TRACT D OF THE SW 1/4 OF THE SW 1/4 OF SECTION 5,**

(formerly a portion of Lot B of Lot 3 of Tract D)  
LOCATED IN THE SW 1/4 OF THE SW 1/4  
SECTION 5, T1N, R8E, B.H.M.  
RAPID CITY, PENNINGTON COUNTY, SOUTH DAKOTA

**RECEIVED**

OCT 09 2007

Rapid City Growth  
Management Department

TRACT C

SEPTEMBER 26, 2007  
N.T.S.

TRACT 1  
SHAMROCK  
SUBDIVISION



LOT F OF  
LOT 2

LOT G OF LOT 2

LOT H OF  
LOT 2

LOT J OF  
LOT 2

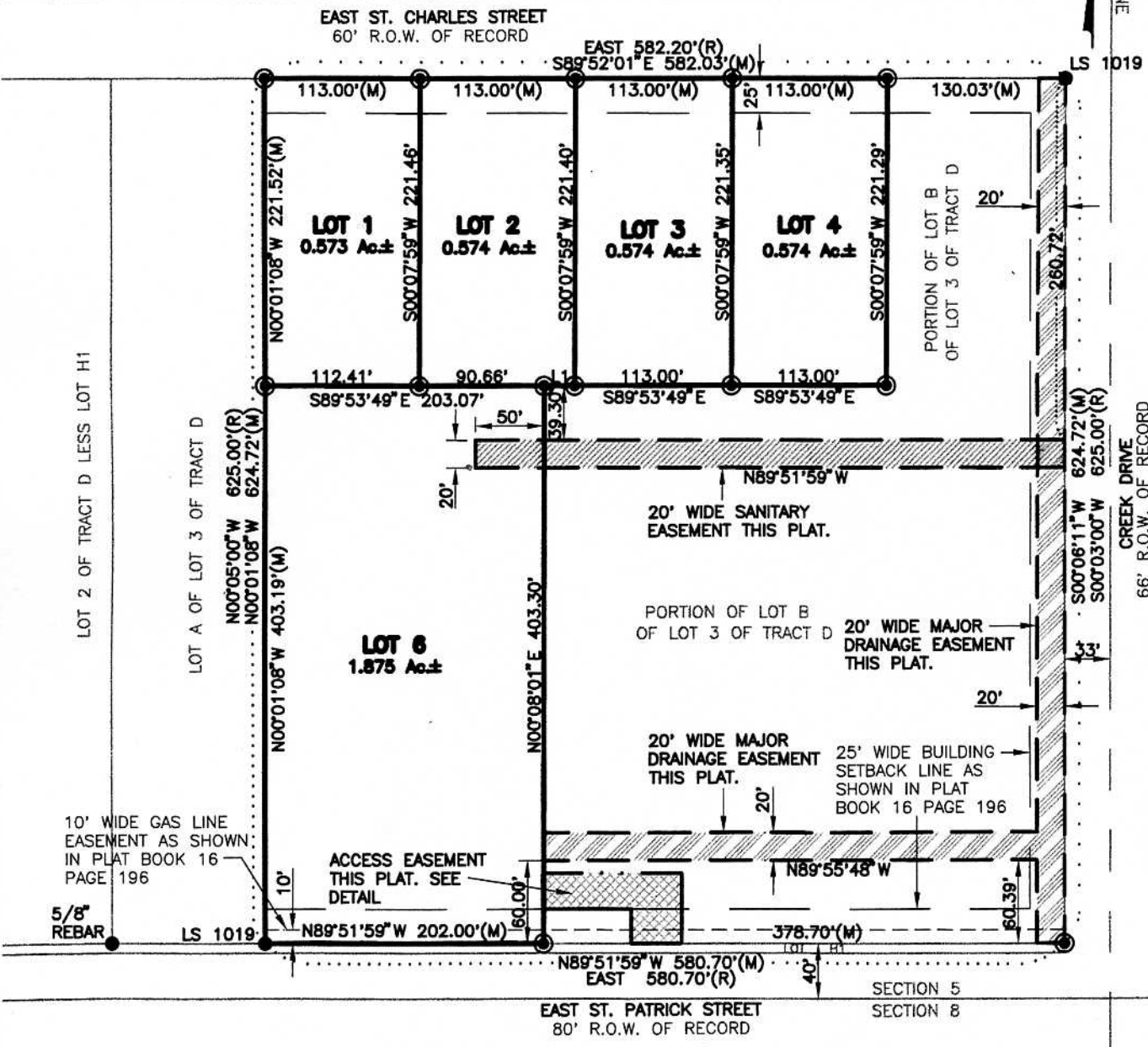
LOT K OF LOT 2  
OF THE SW 1/4 OF  
THE SW 1/4 LESS  
LOT H1

SECTION 1/16 LINE

CREEK DRIVE  
66' R.O.W. OF RECORD

LOT 2 OF TRACT D LESS LOT H1

LOT A OF LOT 3 OF TRACT D



10' WIDE GAS LINE  
EASEMENT AS SHOWN  
IN PLAT BOOK 16  
PAGE 196

5/8"  
REBAR

ACCESS EASEMENT  
THIS PLAT. SEE  
DETAIL

20' WIDE SANITARY  
EASEMENT THIS PLAT.

PORTION OF LOT B  
OF LOT 3 OF TRACT D

20' WIDE MAJOR  
DRAINAGE EASEMENT  
THIS PLAT.

20' WIDE MAJOR  
DRAINAGE EASEMENT  
THIS PLAT.

25' WIDE BUILDING  
SETBACK LINE AS  
SHOWN IN PLAT  
BOOK 16 PAGE 196

SECTION 5  
SECTION 8