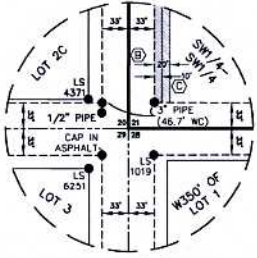
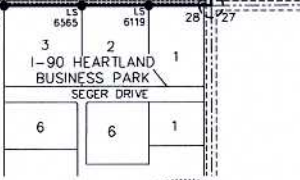
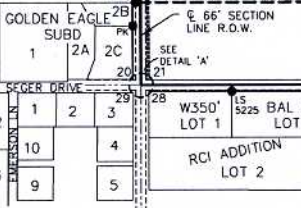
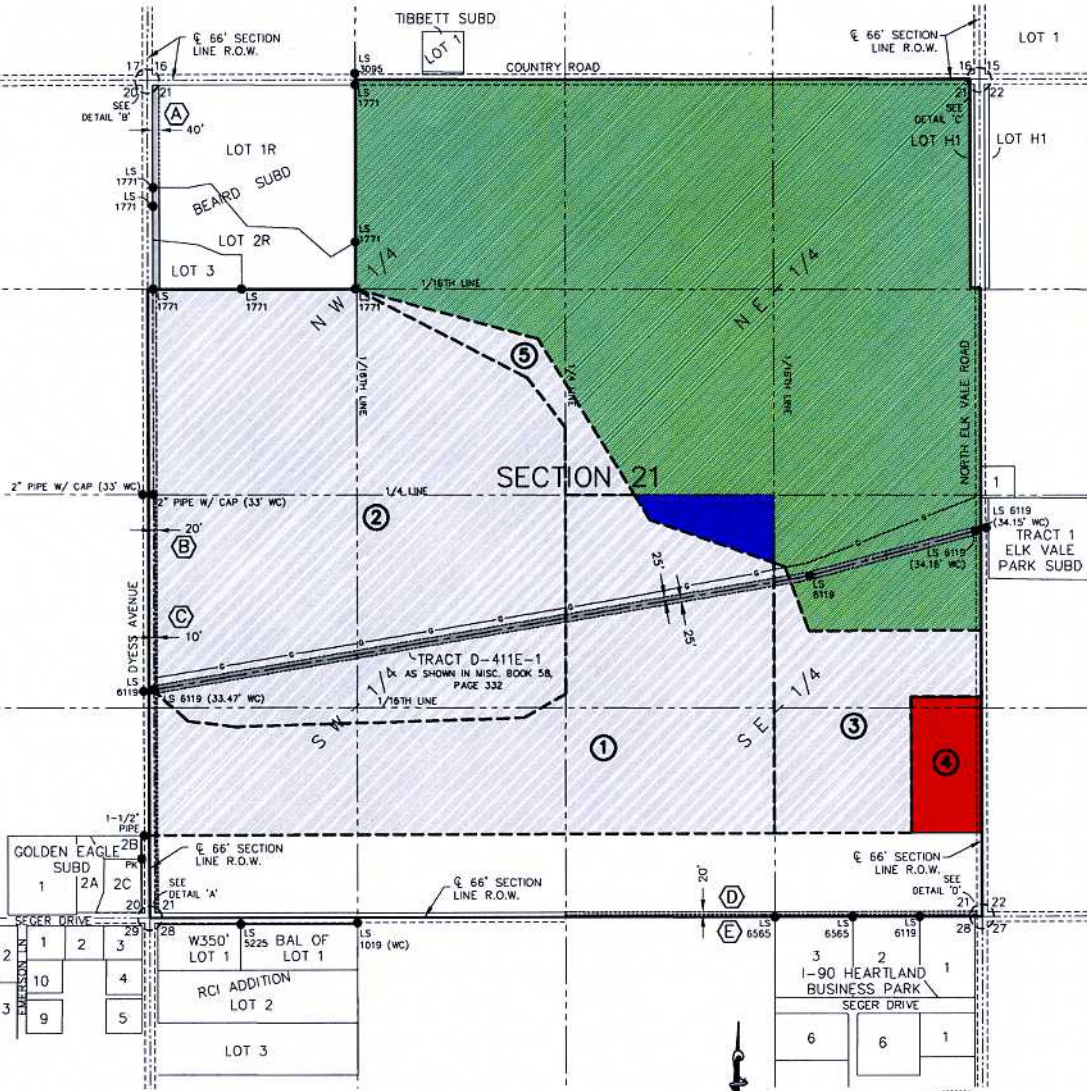
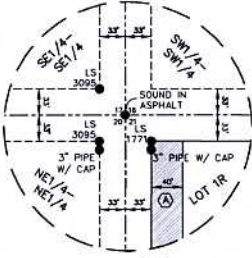


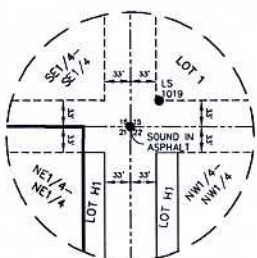
FUTURE LAND USE
SECTION 21
T2N, R8E, BHM
 PENNINGTON COUNTY, SOUTH DAKOTA



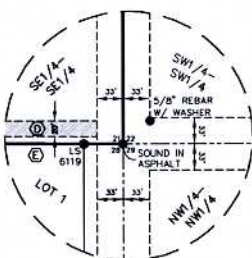
DETAIL 'A'
SCALE: 1"=100'



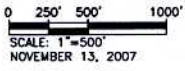
DETAIL 'B'
SCALE: 1"=100'



DETAIL 'C'
SCALE: 1"=100'



DETAIL 'D'
SCALE: 1"=100'



ZONING NOTES

- ① PUBIC TO LL
- ② L.D.R. TO LL
- ③ R.R. TO LL
- ④ R.R. TO C.C.
- ⊙ R.R. TO LL
- G.C.
- R.R.
- LI.
- PUBLIC

SHOWN EASEMENTS

- A 40' WIDE WEST RIVER ELECTRIC R.O.W. EASEMENT AS SHOWN IN MISC. BOOK 11, PAGE 4910
- B 20' WIDE M.D.U. PIPELINE EASEMENT AS SHOWN IN MISC. BOOK 93, PAGE 8388, MISC. BOOK 93, PAGE 8390, & MISC. BOOK 93, PAGE 8391
- C 10' WIDE WEST RIVER ELECTRIC R.O.W. EASEMENT AS SHOWN IN MISC. BOOK 11, PAGE 4905 & MISC. BOOK 11, PAGE 4910
- D 20' WIDE EASEMENT FOR PUBLIC & PRIVATE UTILITIES AS SHOWN IN MISC. BOOK 137, PAGE 1298
- E PREVIOUSLY VACATED 66' WIDE SECTION LINE R.O.W. AS SHOWN IN MISC. BOOK 140, PAGE 1681



BLANKET EASEMENTS

1. MONTANA-DAKOTA UTILITIES CO. PIPELINE AND TELEPHONE LINE EASEMENT AS SHOWN IN MISC. BOOK 49, PAGE 226.
 LOCATED IN THE SW/4 & SE/4 OF NE/4, SECTION 21.
2. MONTANA-DAKOTA UTILITIES CO. PIPELINE AND TELEPHONE LINE EASEMENT AS SHOWN IN MISC. BOOK 58, PAGE 328.
 LOCATED IN THE SW/4 OF NE/4 & THE SE/4 OF NE/4 & THE NE/4 OF SE/4, SECTION 21.
3. MONTANA-DAKOTA UTILITIES CO. PIPELINE AND TELEPHONE LINE EASEMENT AS SHOWN IN MISC. BOOK 26, PAGE 328.
 LOCATED IN THE NW/4 OF NE/4, SECTION 21.
4. MONTANA-DAKOTA UTILITIES CO. PIPELINE AND TELEPHONE LINE EASEMENT AS SHOWN IN MISC. BOOK 58, PAGE 328.
 LOCATED IN THE SE/4 OF SE/4, SECTION 21.
5. BLACK HILLS UTILITIES EASEMENT AS SHOWN IN MISC. BOOK V, PAGE 6.
 LOCATED IN THE SW/4 OF NE/4 & THE NE/4 OF SE/4, SECTION 21.