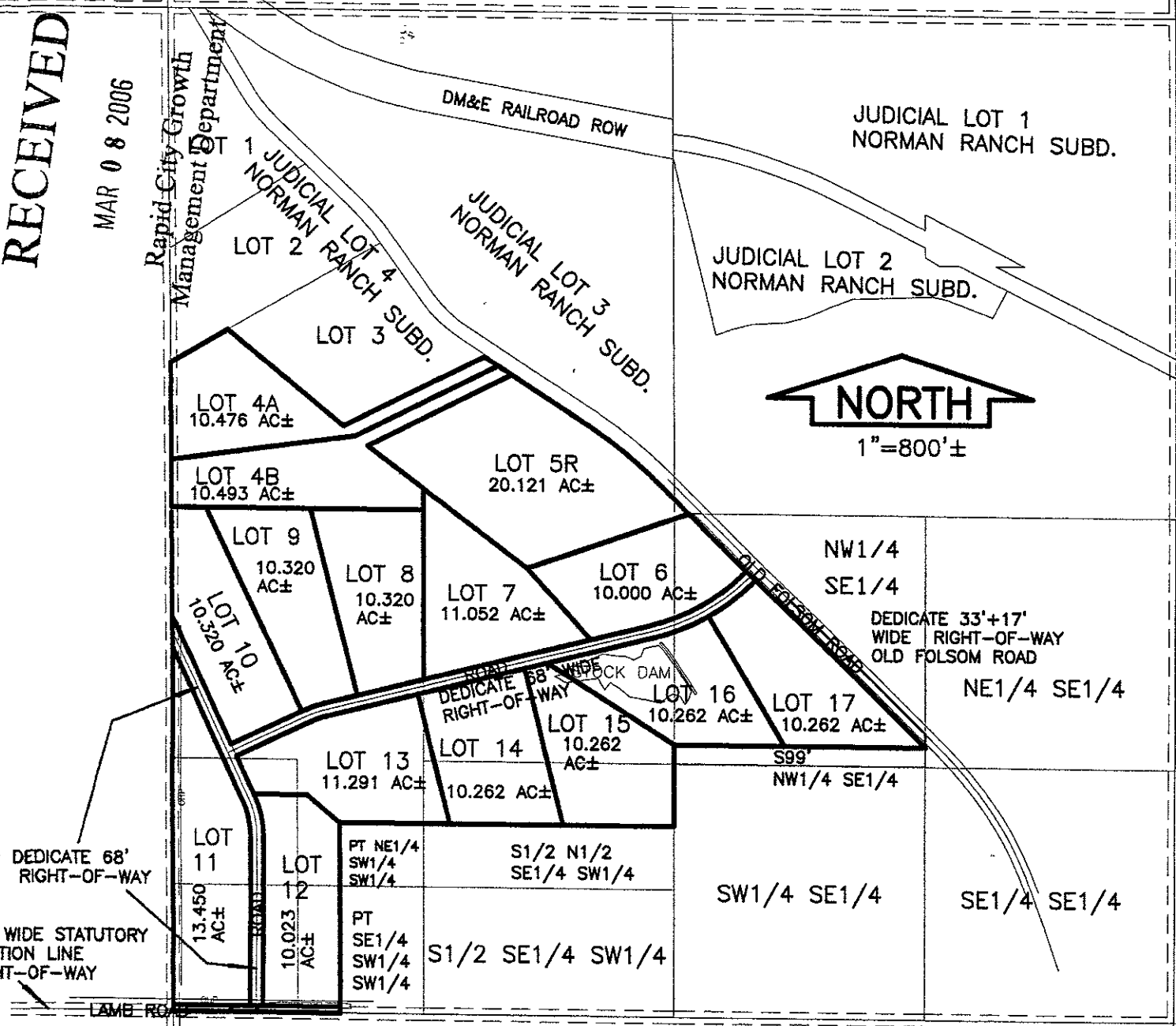


RECEIVED

MAR 08 2006

Rapid City Growth Management Department



PLAT OF LOT 4A, LOT 4B, AND LOT 5R OF JUDICIAL LOT 4, AND LOTS 6 THROUGH 17, NORMAN RANCH SUBDIVISIO

(FORMERLY LOT 4 AND LOT OF JUDICIAL LOT 4 OF NORMAN RANCH SUBDIVISION; THE N1/2 SW1/4; THE NW1/4 SE1/4 LYING SOUTHWEST OF OLD FOLSOM ROAD LESS T SOUTH 99' OF NW1/4 SE1/4; THE N1/2 N1/2 SE1/4 SW1/4; THE W1/2 SW1/4 SW1/4; THE N1/2 NE1/4 SW1/4 SW14/; THE WEST 220' OF S1/2 NE1/4 SW1/4 SW1/4 AND THE WEST 220' OF SE1/4 SW14 SW1/4; ALL SECTION 28)

LOCATED IN THE S1/2 NW1/4; SW1/4 NE1/4; NW1/4 SE1/4; AND IN THE SW1/4; SECTION 28, T1N, R8E, B.H.M., PENNINGTON COUNTY, SOUT DAKOTA.

UTILITY AND MINOR DRAINAGE EASEMENTS: 8' ON THE INTERIOR SIDES OF ALL LOT LINES.

DRAWINGS BY: [unclear] 2000 3:21:10 PM, LEXMARK 5200 SERIES, 1:00