

ADVERTISING AUTHORITY

This form must be completed and approved by the City Finance Office prior to presenting items to the City Council and/or Committees of the City Council. This covers all items which require formal bids, currently anything over \$25,000 (except emergency and repair costs)

I. PROJECT NO.: SSW05-1471 and P1648() PCN H020 CIP No. 50518
 II. PROJECT NAME: Anamosa Street Reconstruction (from Milwaukee to LaCrosse Street)
 III. Project/Item(s) Description: Grading, sewerline, HP waterline, LP waterline, drainage, storm sewer, PCC pavement, C/G, street lighting, signage, & markings.

IV. BID LETTING DATE: February 12, 2008

V. ESTIMATED COST OF PROJECT/ITEM(S) \$ 2,523,814.00

VI. BASIS OF PAYMENT Assessed Non-Assessed
 Single Payment Partial Payment

VII. APPROPRIATION DATA

Amount	\$135,671	\$388,546	\$1,999,597		
Fund Name	Sewer	Water	State STP		
Department	833	933	8913		
Line Item	4380	4381	4370		
Fund	604	602	505		

VIII. (If applicable) Grant No.: _____
 Funding Source: _____
 Estimated Completion Date: _____
 Estimated Grant Receipt Date: _____

IX. DEPARTMENT/DIVISION:

Project Manager: Klare Schroeder Date 1/2/2008

 DIVISION MANAGER Signature Date _____

 DEPARTMENT DIRECTOR Signature Date _____

FINANCE OFFICE USE ONLY			Approved		Carbon Copy
Appropriation Cash Flow	Date	Initial	Yes	No	Investment Desk
					Public Works
					Engineering
					Project Manager

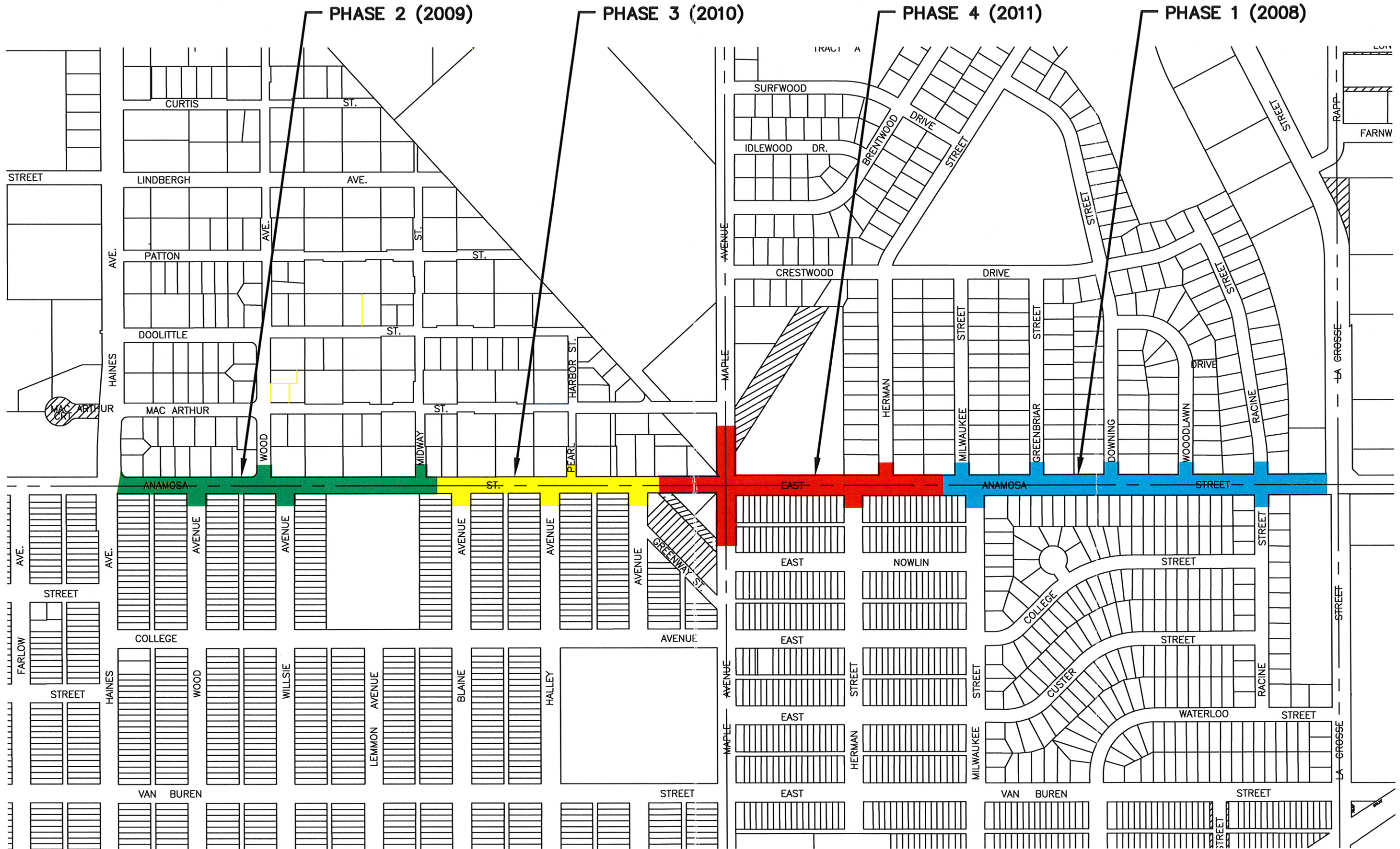
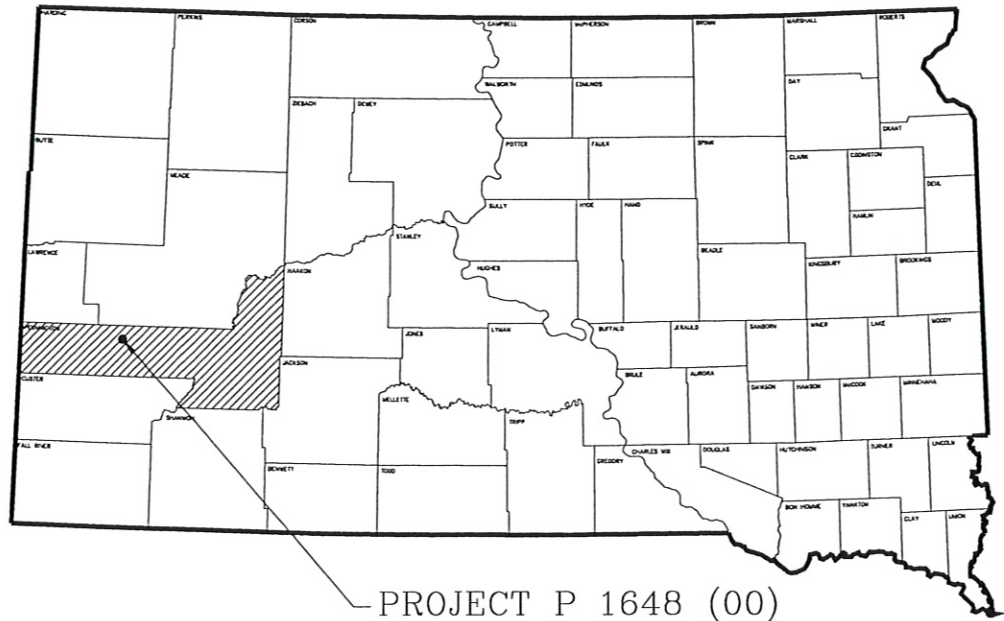


FIGURE NUMBER 3
PHASING PLAN
ANAMOSA STREET RECONSTRUCTION

SCALE: 1"=400'



PROJECT P 1648 (00)

SCHEDULE 1 PROJECT NO. P 1648 (00) ANAMOSA STREET RECONSTRUCTION PHASE 1 (MILWAUKEE ST. TO LACROSSE ST.) RAPID CITY, SOUTH DAKOTA

GRADING, PCC PAVEMENT, CURB & GUTTER, DRAINAGE, ROADWAY
LIGHTING, PAVEMENT MARKINGS, AND PERMANENT SIGNING
PCN H020



DESIGN DESIGNATION

ADT (2006)	8700
ADT (2025)	16,100
DHV	1774
D	50%
T DHV	1.09
T*ADT	161
DESIGN SPEED	35mph
ACRES DISTURBED	3.1
RECEIVING WATER BODY	RAPID CREEK 2 MILES DOWNSTREAM

LEGEND

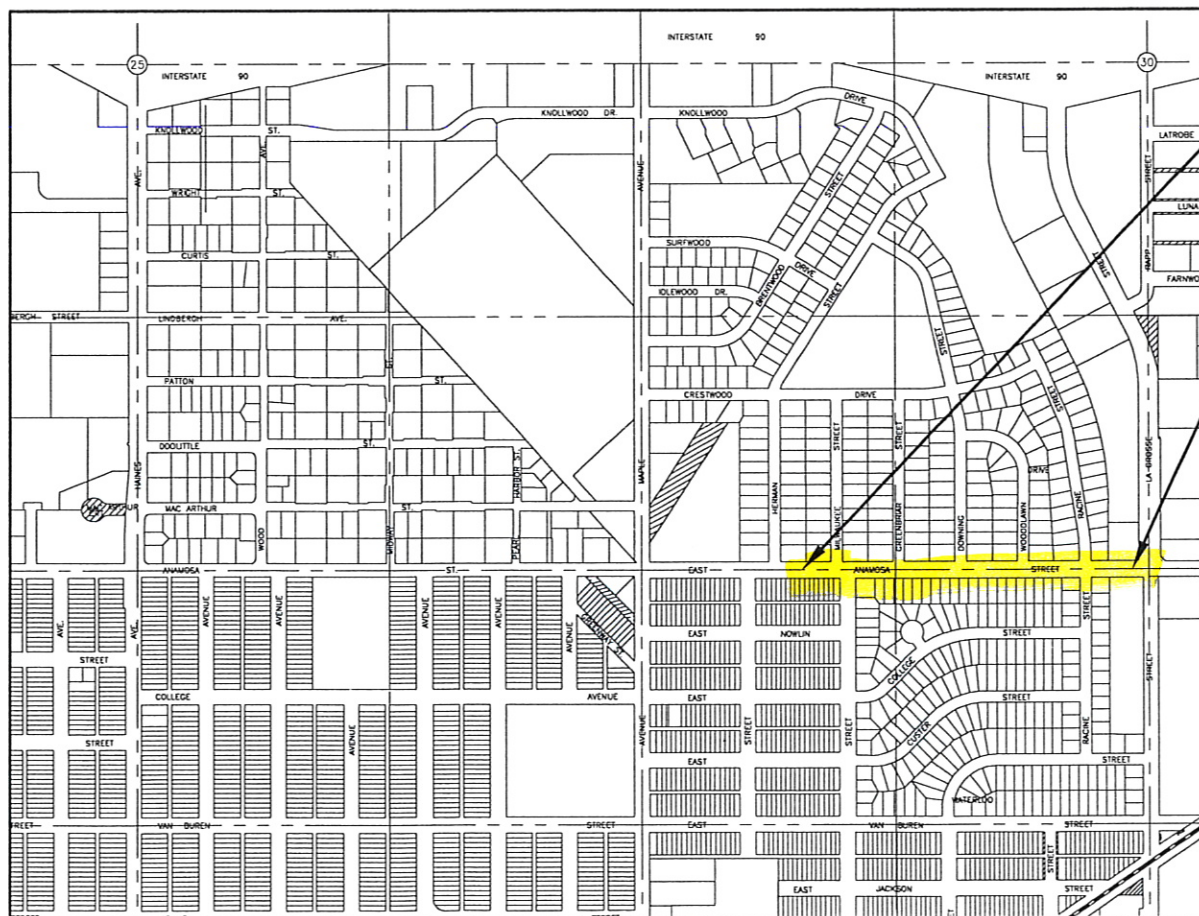
SECTION LINE	---
QUARTER LINE	----
SIXTEENTH LINE	-----
PROPERTY LINE	=====
CENTERLINE	-----
WORK LIMITS	-----
FOUND CORNERS	●
EXISTING WATER MAIN	— W —
EXISTING SANITARY SEWER	— S —
EXISTING STORM SEWER	-----
NEW WATER MAIN	— W —
NEW SANITARY SEWER	— S —
NEW STORM SEWER	=====
NEW UNDERDRAIN	-----
CONSTRUCTION EASEMENT	//////

SCALES

PLAN,	1" = 40'
PROFILE,	{ HORIZONTAL: 1" = 40'
	{ VERTICAL: 1" = 10'
CROSS SECTION,	{ HORIZONTAL: 1" = 40'
	{ VERTICAL: 1" = 20'

ANAMOSA STREET

GROSS LENGTH:	0.32 MILES
LENGTH OF EXCEPTIONS:	0.0 MILES
NET LENGTH:	0.32 MILES



VICINITY MAP
SCALE: 1" = 5000'

BEGIN P 1648 (00)

ANAMOSA STREET
STA 39+50.75 – West Side of Intersection
of Anamosa Street and Milwaukee Street
Section 30, T2N, R8E, BHM

END P 1648 (00)

ANAMOSA STREET
STA 56+01.49 – West Side of Intersection
Of Anamosa Street And LaCrosse Street
Section 30, T2N, R8E, BHM

INDEX OF SHEETS

1	TITLE SHEET
2	ESTIMATE OF QUANTITIES
3	TABLE OF PIPE QUANTITIES
4-15	GENERAL NOTES
16-17	EROSION CONTROL NOTES
18-20	STORM WATER POLLUTION PREVENTION PLAN
21	HORIZONTAL ALIGNMENT DATA AND CONTROL DATA
23-25	TYPICAL SECTIONS
26-31	TRAFFIC CONTROL PLAN
32-35	DEMOLITION PLAN
36-46	PLAN AND PROFILE
47-50	CURB AND GUTTER LAYOUT
51-54	PAVEMENT AND JOINT LAYOUT
55-59	PAVEMENT MARKINGS AND PERMANENT SIGNING
60-82	SDOT STANDARD PLATES
83-87	FMG DETAILS AND CITY OF RAPID CITY DETAILS
88-93	CROSS SECTIONS

E1-E4	LIGHTING PLAN
E5-E6	ELECTRICAL NOTES
E7	LIGHTING WIRING DIAGRAM
E8	ELECTRICAL TABLES
E9-E11	ELECTRICAL DETAILS

CIVIL PLANS PREPARED BY

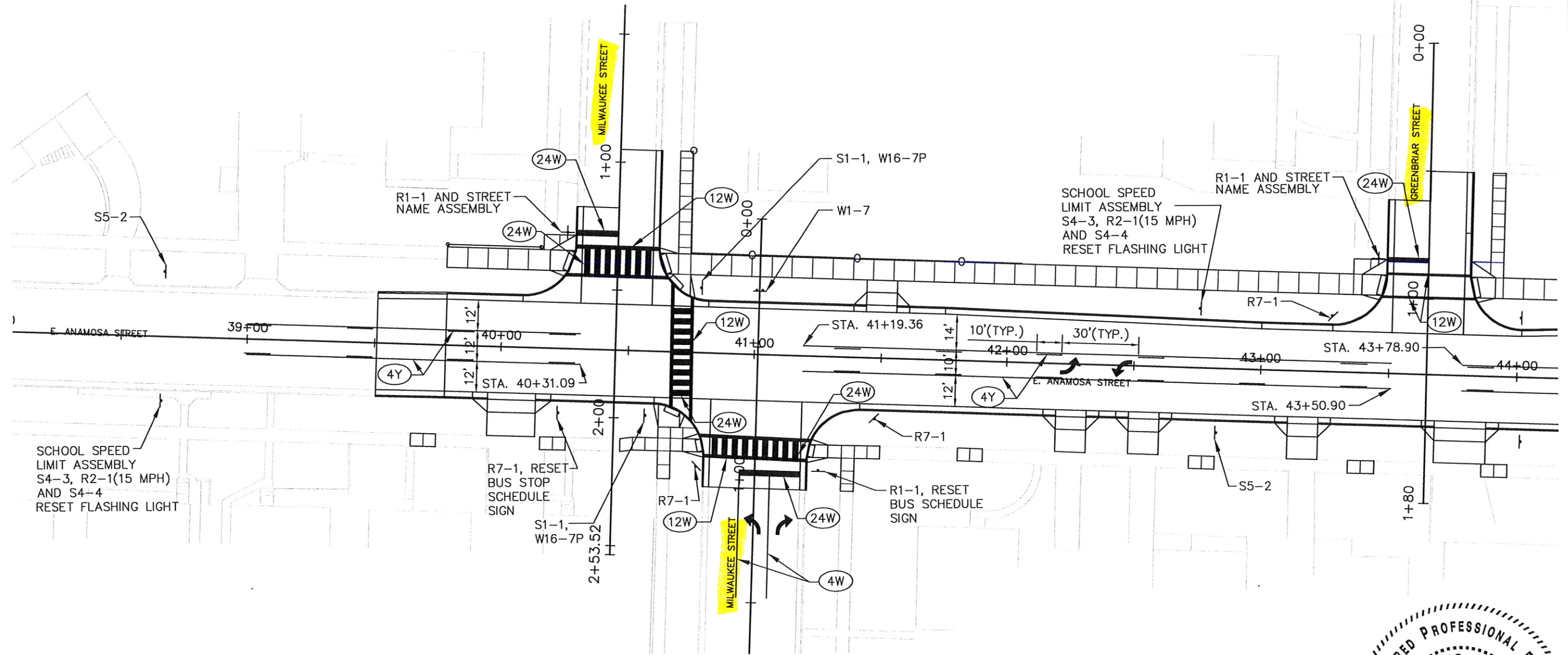
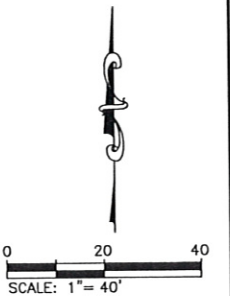


LIGHTING & SIGNAL PLANS PREPARED BY



PAVEMENT MARKING AND PERMANENT SIGNS

PROJECT	SHEET NO.	TOTAL SHEETS
P 1648 (00)	56	93



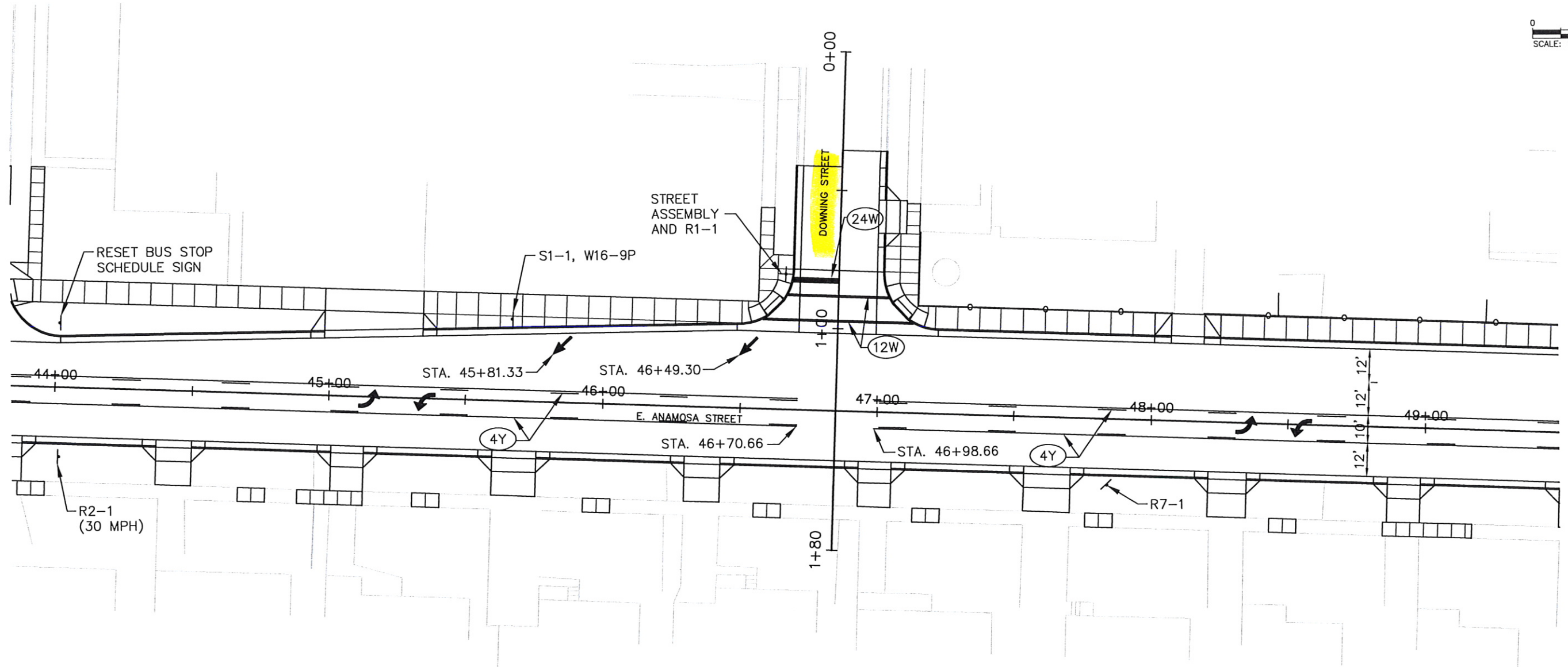
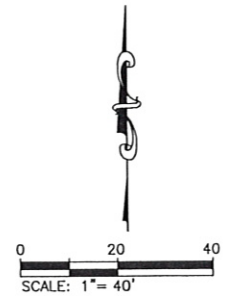
H:\Land Projects\8906 Anamosa Street\dwg\1471 Stripe-PH1.dwg, STRIPE 1, 11/19/2007 9:58:16 AM



REVISED 10/30/2007

PAVEMENT MARKING AND PERMANENT SIGNS

PROJECT	SHEET NO.	TOTAL SHEETS
P 1648 (00)	57	93



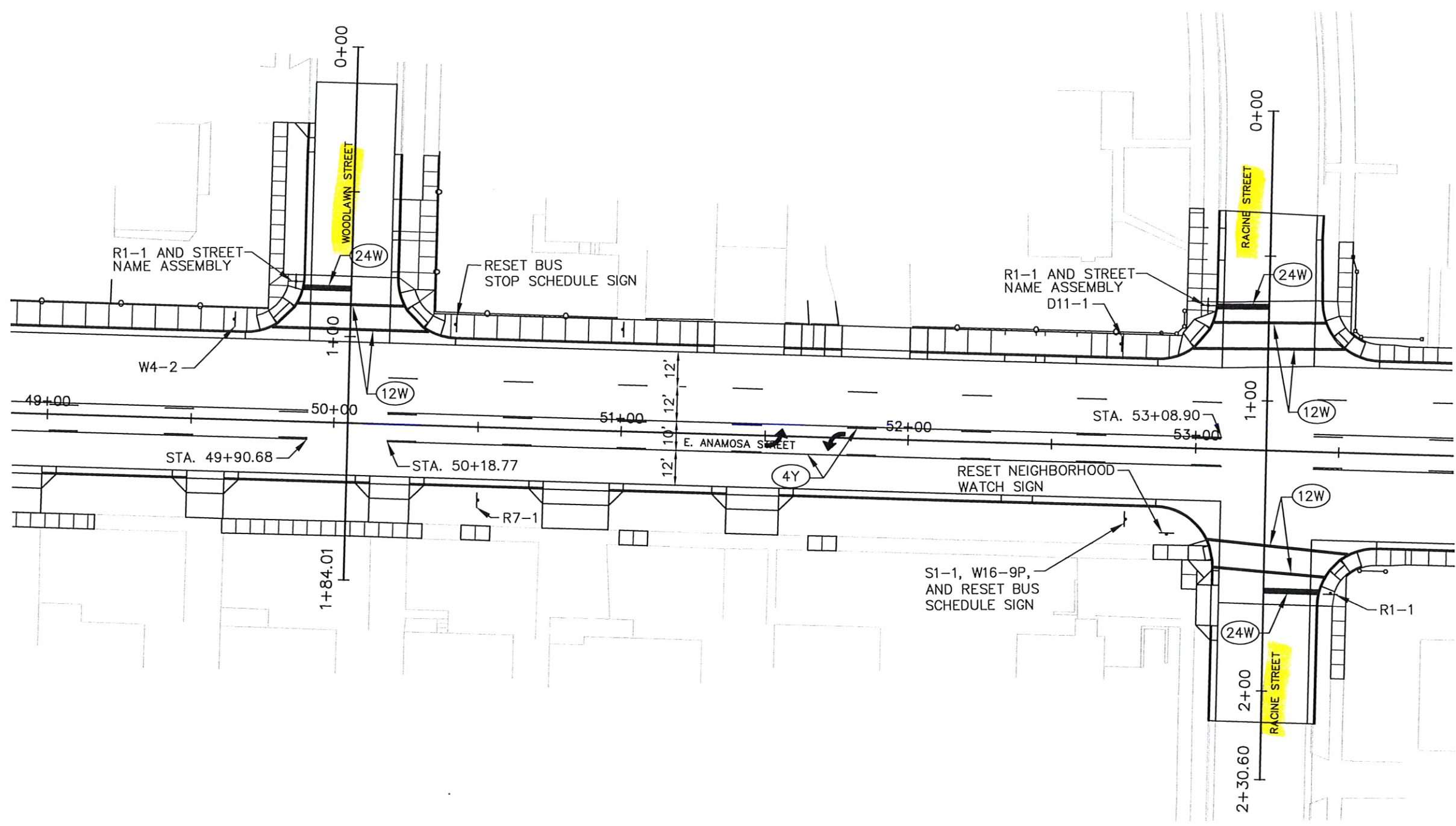
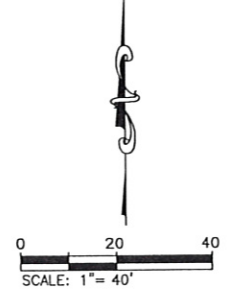
H:\Land Projects\8906 Anamosa Street\dwg\1471 Stripe-PH1.dwg, STRIPE 2, 9/7/2007 2:21:57 PM



9/12/2007

PAVEMENT MARKING AND PERMANENT SIGNS

PROJECT	SHEET NO.	TOTAL SHEETS
P 1648 (00)	58	93



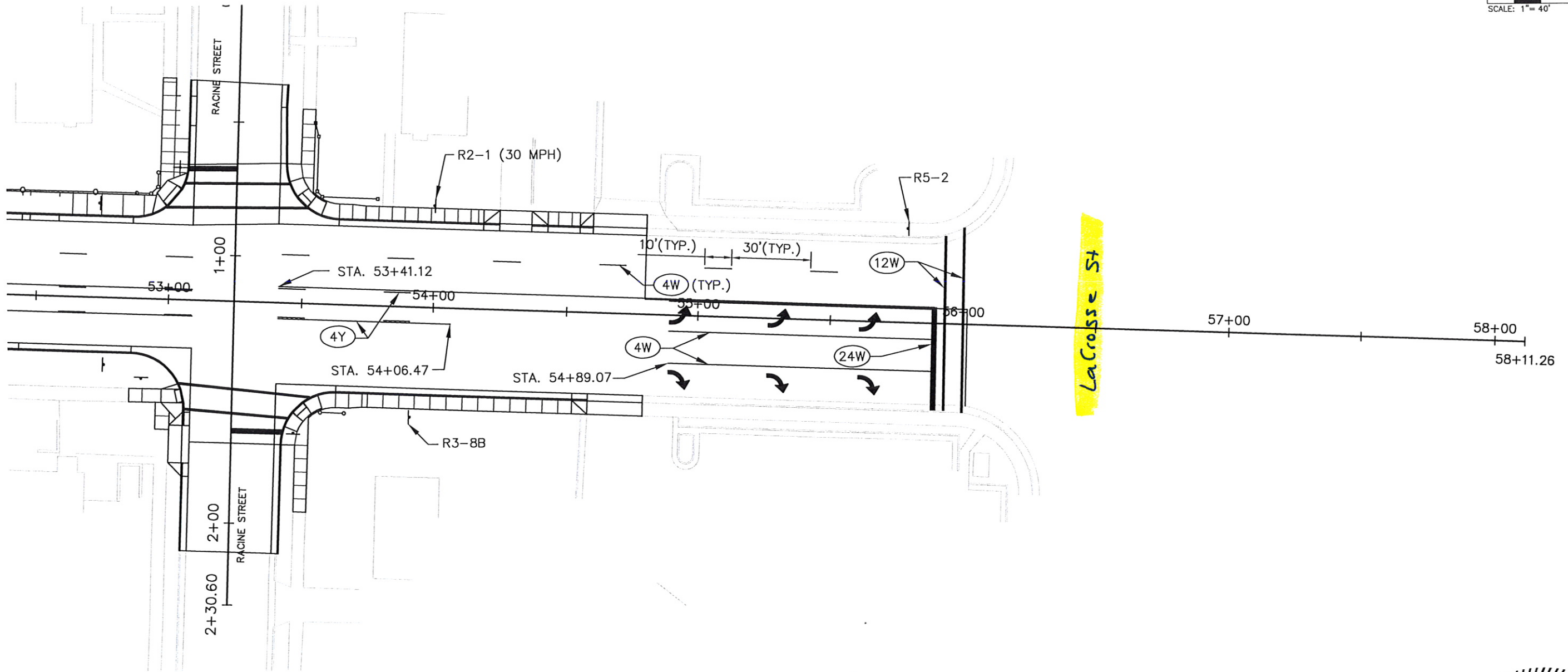
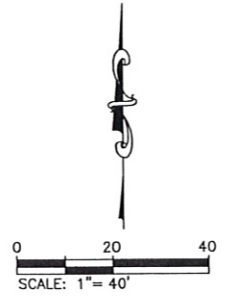
H:\Land Projects\8906 Anamosa Street\dwg\1471 Stripe-PH1.dwg, STRIPE 3, 9/7/2007 2:22:10 PM



9/12/2007

PAVEMENT MARKINGS AND PERMANENT SIGNING

PROJECT	SHEET NO.	TOTAL SHEETS
P 1648 (00)	59	93



H:\Land Projects\8906 Anamosa Street\dwg\1471 Stripe-PH1.dwg, STRIPE 4, 9/7/2007 2:22:26 PM



9/12/2007