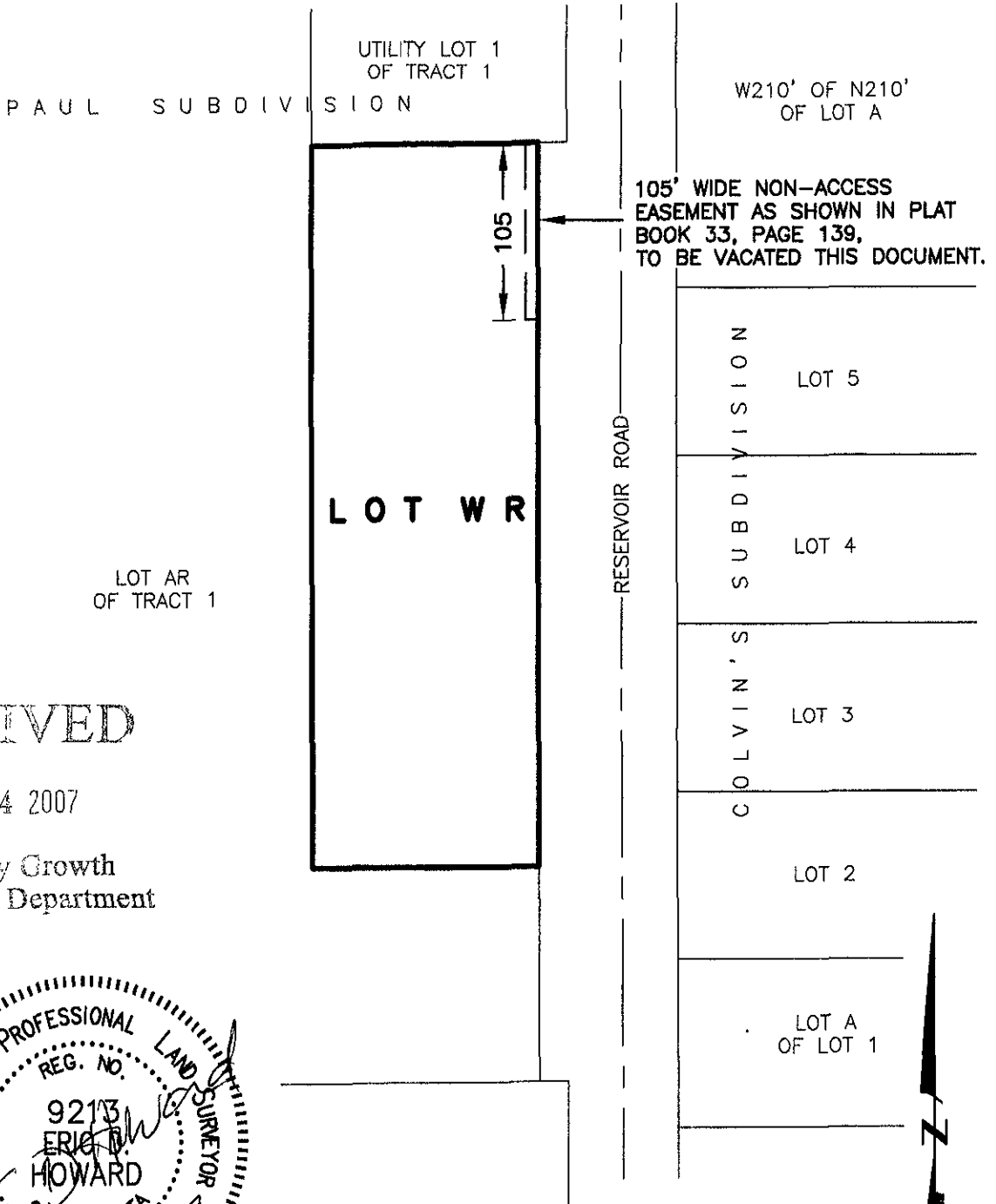


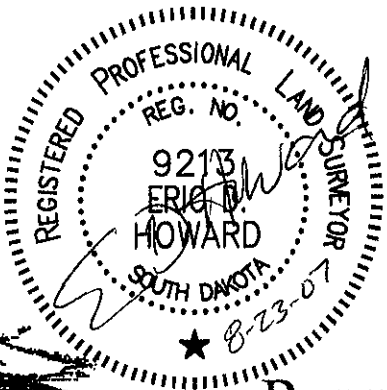
VACATION OF NON-ACCESS EASEMENT LOT WR OF THE NE1/4-NE1/4, SECTION 15 T1N, R8E, BHM, PENNINGTON COUNTY, SOUTH DAKOTA



RECEIVED

AUG 24 2007

Rapid City Growth
Management Department



AUGUST 23, 2007



SCALE 1" = 100'

Renner Associates, LLC.

616 Sixth St. * Rapid City, SD 57701 * 605/721-7310

FAX: 605/721-7313 * E-MAIL: Gary@RennerAssoc.com

