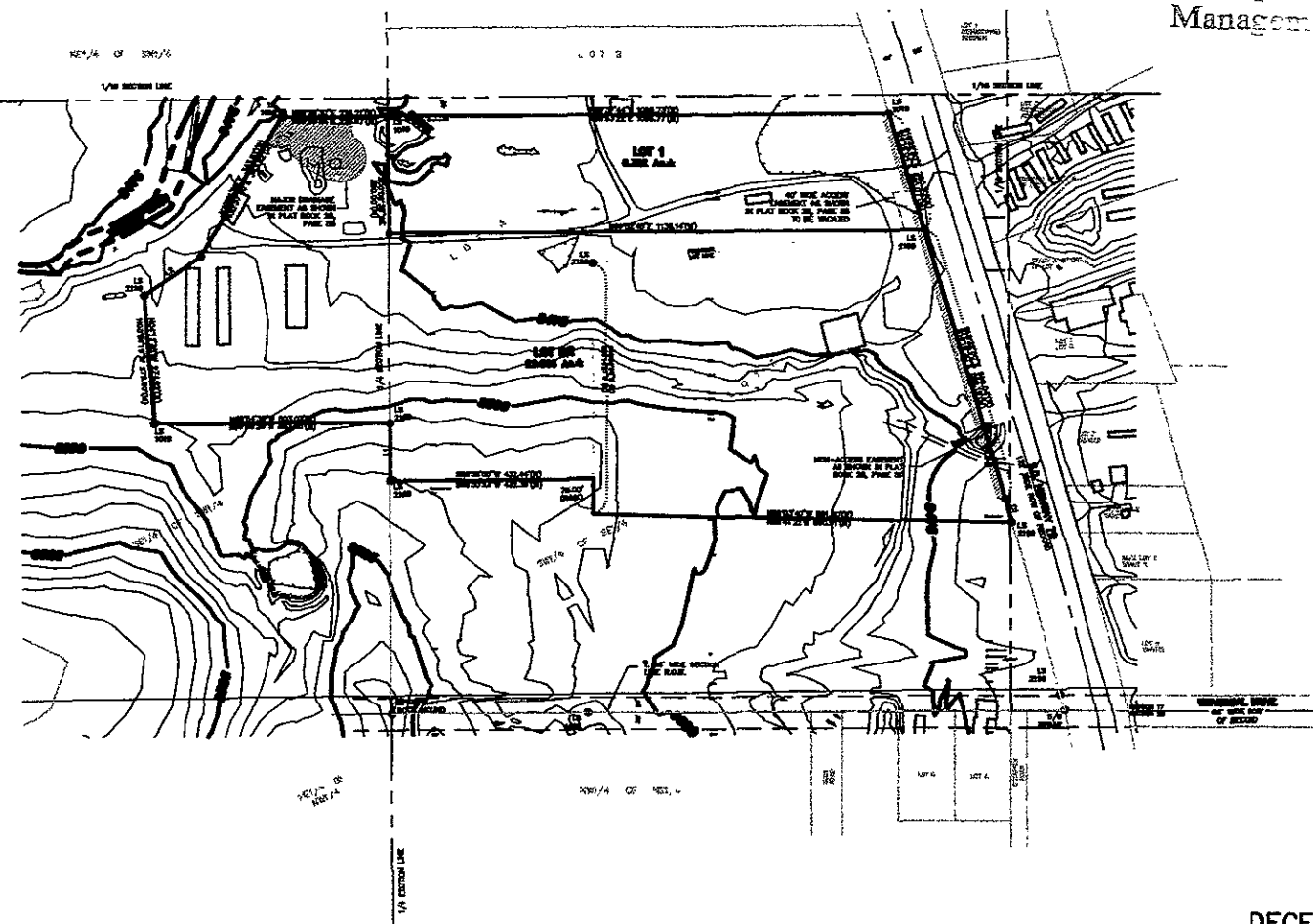


TOPOGRAPHICAL SURVEY  
**LOT 1 OF LOT A AND LOT BR,**  
**KELLER SUBDIVISION**  
 LOCATED IN THE S1/2 OF SE1/4  
 SECTION 17, T2N, R7E, BHM  
 PENNINGTON COUNTY, SOUTH DAKOTA

RECEIVED

DEC 1 3 2007

Rapid City Growth  
Management Department

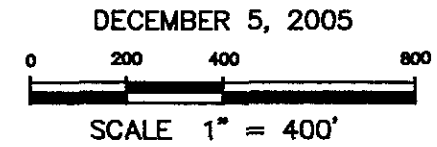


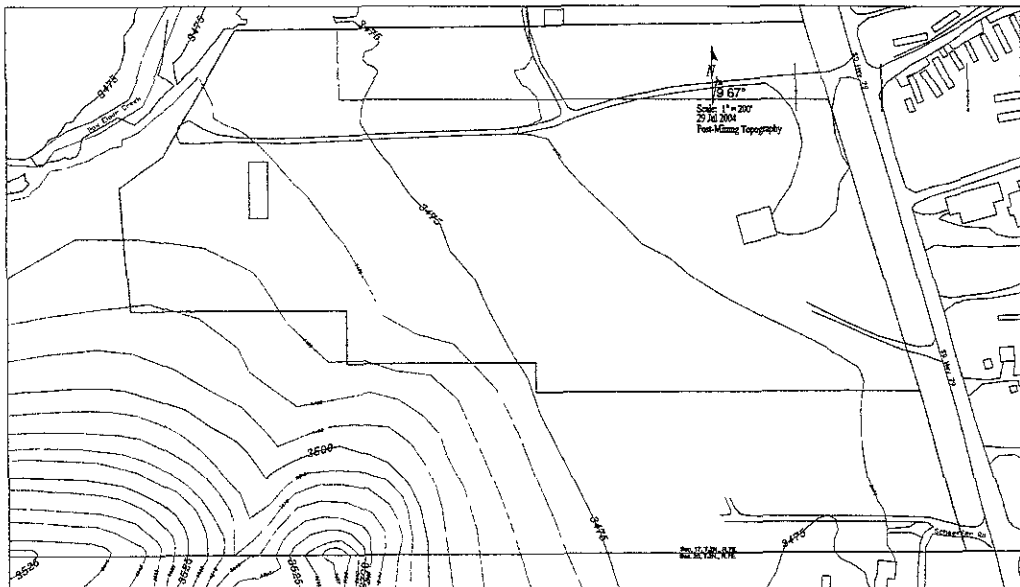
Renner Associates, LLC.

616 Sixth St. \* Rapid City, SD 57701 \* 605/721-7310  
 FAX: 605/721-7313 \* E-MAIL: Gary@RennerAssoc.com

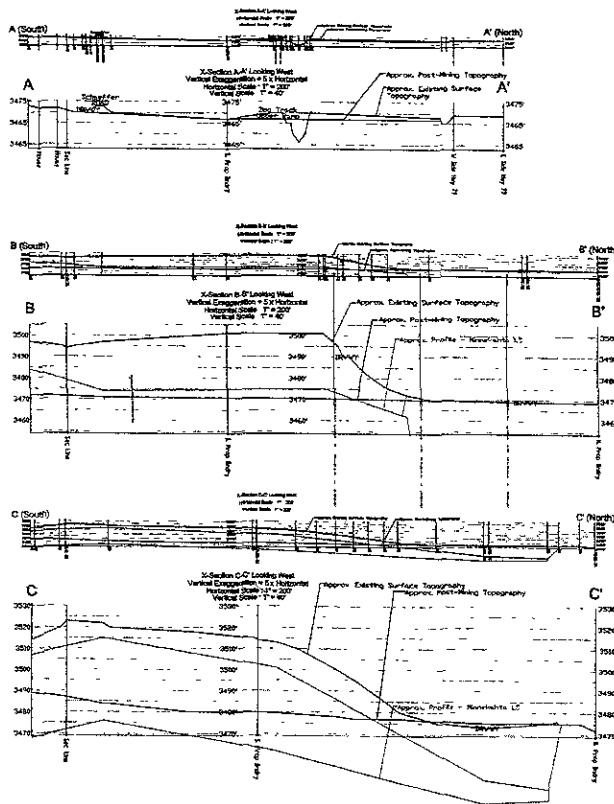


CITY HALL 1903





Blackhawk Quarry, Dog Track Property  
General Post-Mining Topography



RECEIVED

DEC 13 2007

Rapid City Growth

Pete Lien & Sons, Inc  
Rapid City Quarry  
Dog Track  
Pre and Post Mining Plans  
Scale: 1:200  
Date: 07/22/2005  
Name: dwb  
File: Dog Track Property 2

PETE  
LIEN

& Sons, Inc.

P O. Box 440  
Rapid City, SD 57709  
(605) 342-7224