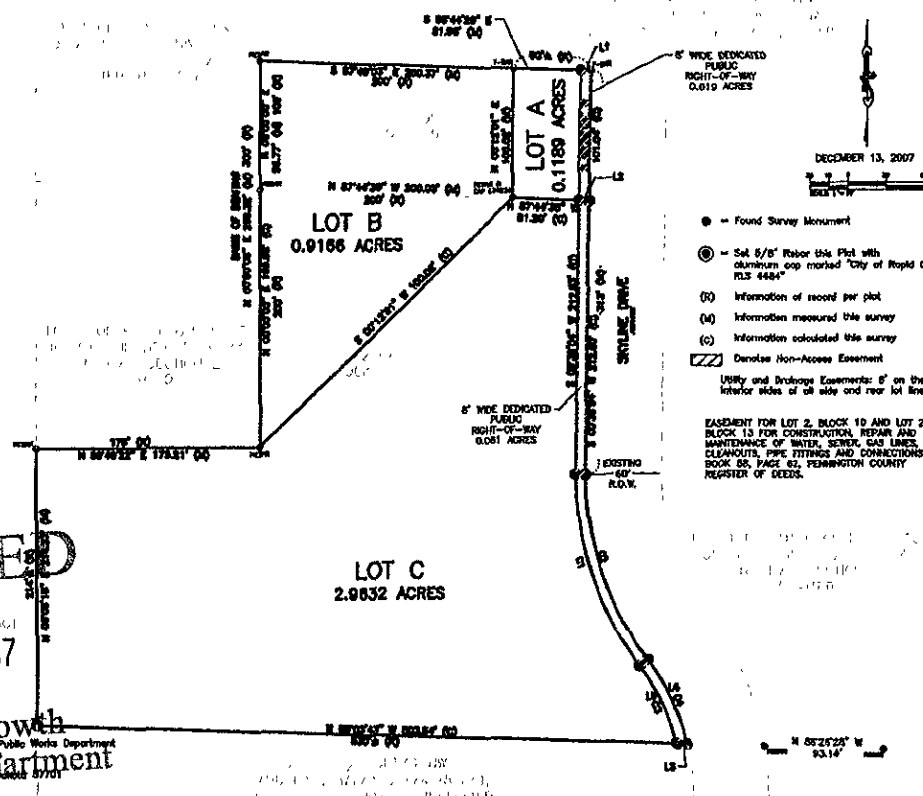


Plat of Lot A, Lot B and Lot C  
 Block 13 (in SW1/4 NE1/4 NW1/4)  
 T1N, R7E, Section 2, BHM, Platted  
 (formerly Lot 2 of SW1/4 NE1/4 NW1/4, T1N, R7E,  
 Section 2, Platted, Block 10 and Lot 2 of SW1/4 NE1/4 NW1/4,  
 T1N, R7E, Platted, Block 13)  
 Rapid City, Pennington County, South Dakota



- = Found Survey Monument
  - ⊙ = Set 5/8" Rabor this Plat with aluminum cap marked "City of Rapid City RLS 4484"
  - (D) Information of record per plat
  - (M) Information measured this survey
  - (C) Information calculated this survey
  - ▨ Denotes Non-Access Easement
- Utility and Bridge Easements: 5' on the interior sides of all side and rear lot lines
- EASEMENT FOR LOT 2, BLOCK 10 AND LOT 2, BLOCK 13 FOR CONSTRUCTION, REPAIR AND MAINTENANCE OF WATER, SEWER, GAS LINES, CLEARENDS, FIRE FITTINGS AND CONNECTIONS, BOOK 58, PAGE 62, PENNINGTON COUNTY REGISTER OF DEEDS.

RECEIVED  
 14 2007

City of Rapid City Public Works Department  
 Engineering Services  
 3000 Broadway  
 Rapid City, South Dakota 57701  
 605-368-1194  
 Project No. 1890

All major drainage easements shown herein shall be kept free of all obstructions, including but not limited to buildings, walls, fences, hedger, trees and shrubs. These easements grant to all public, subordinate the right to construct, operate, maintain, inspect and repair such improvements and structures as it deems expedient to facilitate drainage from any source.

LINE	DELTA	ARC	RADIUS	CHORD	CHORD BEARING
C1	37.30°00'	169.70'	244.00'	136.88'	S 19°43'00" E
C2	37.30°00'	153.17'	238.00'	121.77'	S 19°43'00" E
C3	44.87°00'	86.50'	136.00'	71.89'	S 17°00'00" E
C4	44.87°00'	71.89'	128.00'	71.89'	S 17°00'00" E

LINE	BEARING	LENGTH
L1	N 87°46'03" W	8.00'
L2	N 87°44'30" W	8.00'
L3	N 89°03'43" W	6.33'
L4	S 22°58'21" E	72.43'
L5	S 22°58'20" E	64.82'

**CERTIFICATE OF SURVEYOR** State of South Dakota City of Pennington s.s.

I, Larry V. Christrom, Registered Land Surveyor No. SD 4484, in the State of South Dakota, do hereby certify that at the request of the owner(s) listed hereon I have surveyed that tract of land shown, and to the best of my knowledge and belief, the within plat is a representation of said survey. Easements or restrictions of miscellaneous record or private agreements that are not known to me are not shown hereon.

In witness whereof, I have hereunto set my hand and Seal,

Larry V. Christrom Registered Land Surveyor SD 4484

Date

**CERTIFICATE OF HIGHWAY OR STREET AUTHORITY**

The location of the proposed lot lines with respect to the Highway or Street as