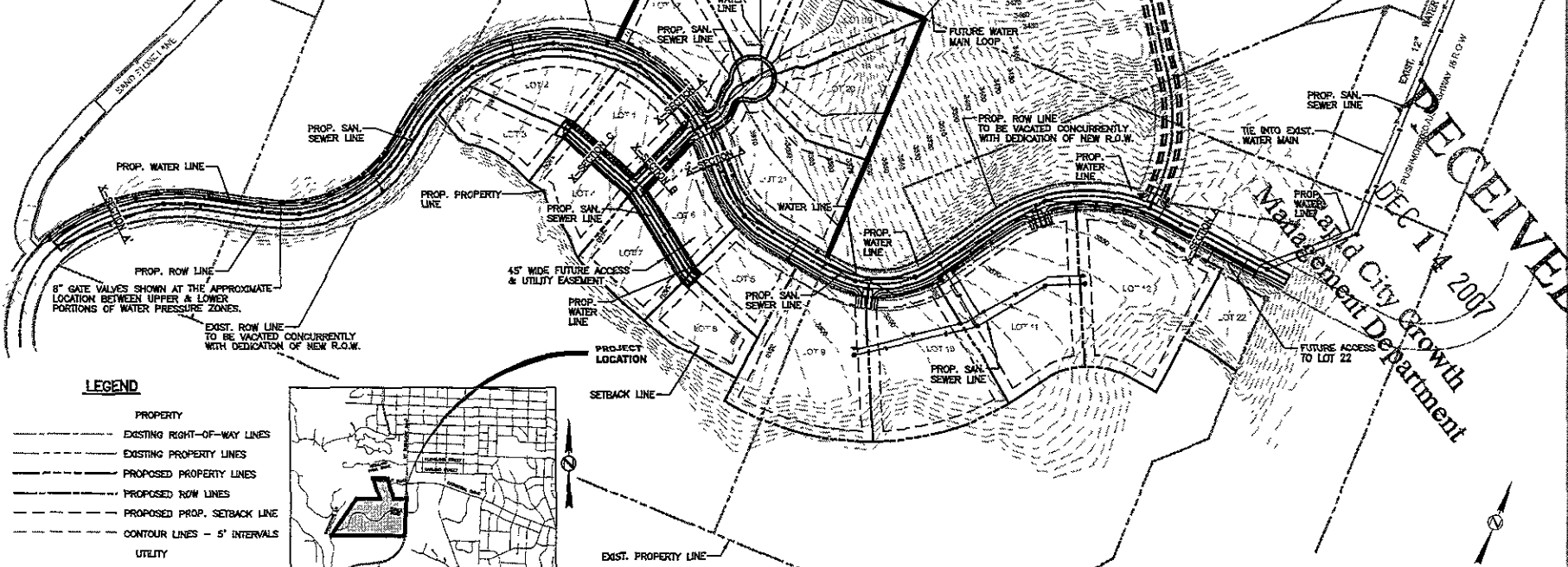
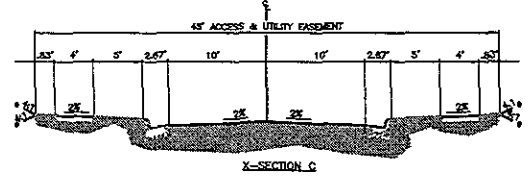
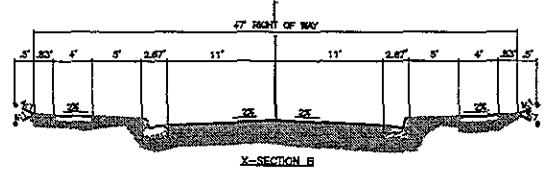
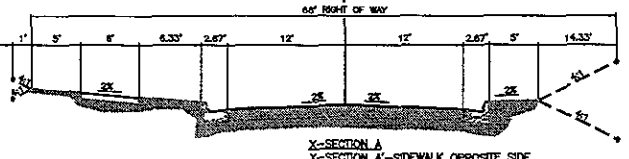
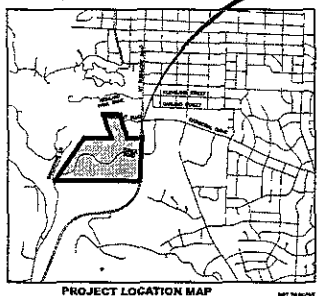


1. CONTOUR INFORMATION PROVIDED FOR THIS LAYOUT INCLUDES THE ORIGINAL SURVEYED CONTOURS AND THE PROPOSED CONTOURS AS SHOWN ON THE APPROVED PLANS FOR THE TOWER ROAD/FARMHOLT BLVD. GRADING PROJECT.
2. ALL SETBACKS SHOWN ARE 25'.



LEGEND

- PROPERTY
- EXISTING RIGHT-OF-WAY LINES
- EXISTING PROPERTY LINES
- PROPOSED PROPERTY LINES
- PROPOSED ROW LINES
- PROPOSED PROP. SETBACK LINE
- CONTOUR LINES - 5' INTERVALS
- UTILITY
- SANITARY SEWER LINE
- WATER LINE
- FUTURE CONSTRUCTION



PRELIMINARY
NOT FOR CONSTRUCTION



RECEIVED
 DEC 14 2007
 Rapid City Growth
 Management Department

517 7th street rapid city sd 57701
 ph. 605.342.9470 fax 605.342.2317
 www.fourfront.com
 ARCHITECTURE | ENGINEERING
 DESIGN | SURVEYING
 GIS | SURVEYING

TOWER RD CONSTRUCTION
 DEC 14 2007
 DATE 12/14/07
 REVISIONS