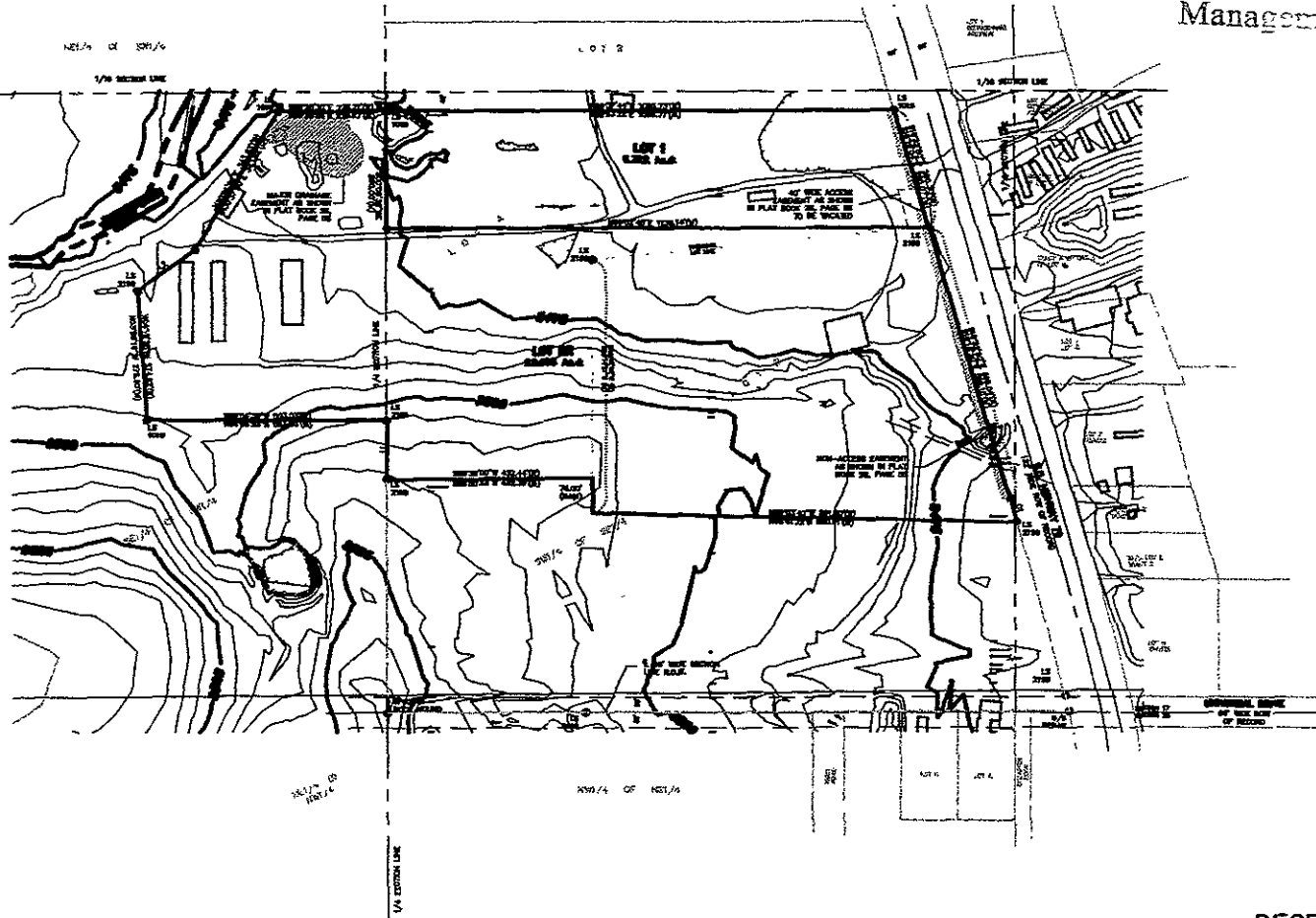


TOPOGRAPHICAL SURVEY
**LOT 1 OF LOT A AND LOT BR,
KELLER SUBDIVISION**
LOCATED IN THE S1/2 OF SE1/4
SECTION 17, T2N, R7E, BHM
PENNINGTON COUNTY, SOUTH DAKOTA

RECEIVED

DEC 13 2007

Rapid City Growth
Management Department



Renner Associates, LLC.

DECEMBER 5, 2005

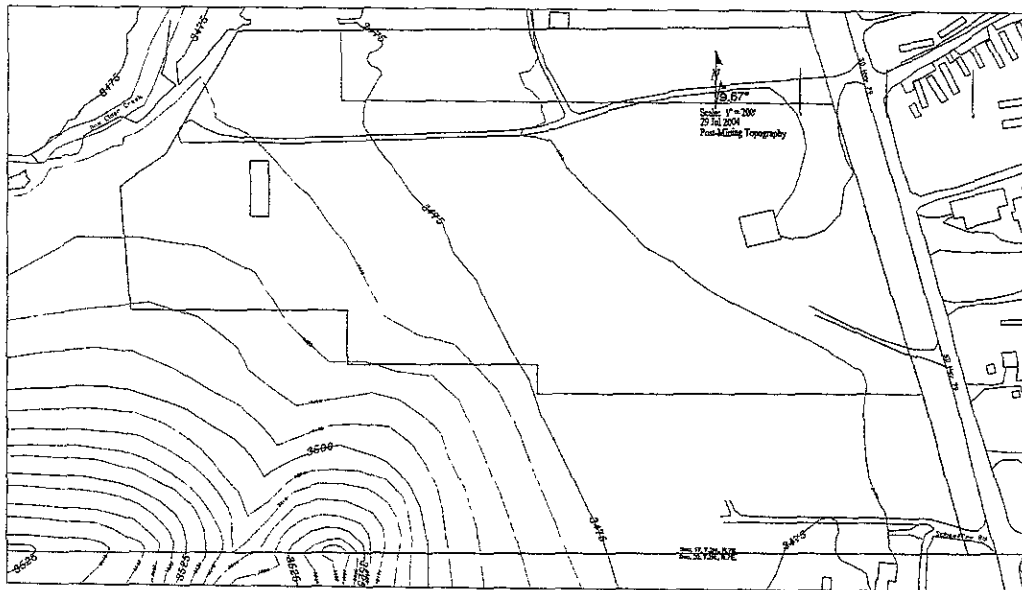


SCALE 1" = 400'

616 Sixth St. * Rapid City, SD 57701 * 605/721-7310
FAX: 605/721-7313 * E-MAIL: Gary@RennerAssoc.com



CITY HALL 1903

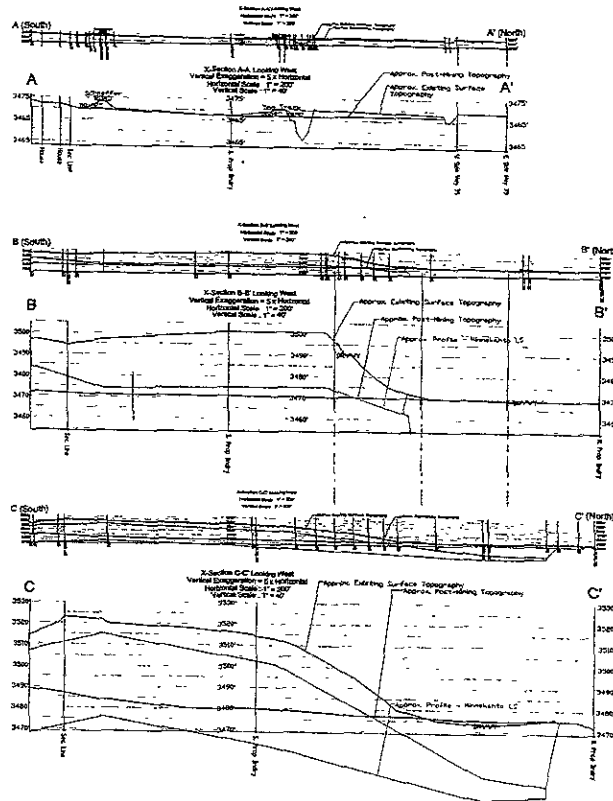


Blackhawk Quarry, Dog Track Property
General Post-Mining Topography

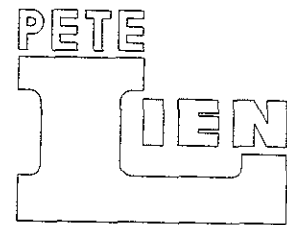
RECEIVED

DEC 13 2007

Rapid City Growth



Pete Lien & Sons, Inc.
Rapid City Quarry
Dog Track
Pre and Post Mining Plans
Scale: 1:200
Date: 07/22/2005
Name: dwb
File: Dog Track Property 2



& Sons, Inc.
P O. Box 440
Rapid City, SD 57709
(605) 342-7224