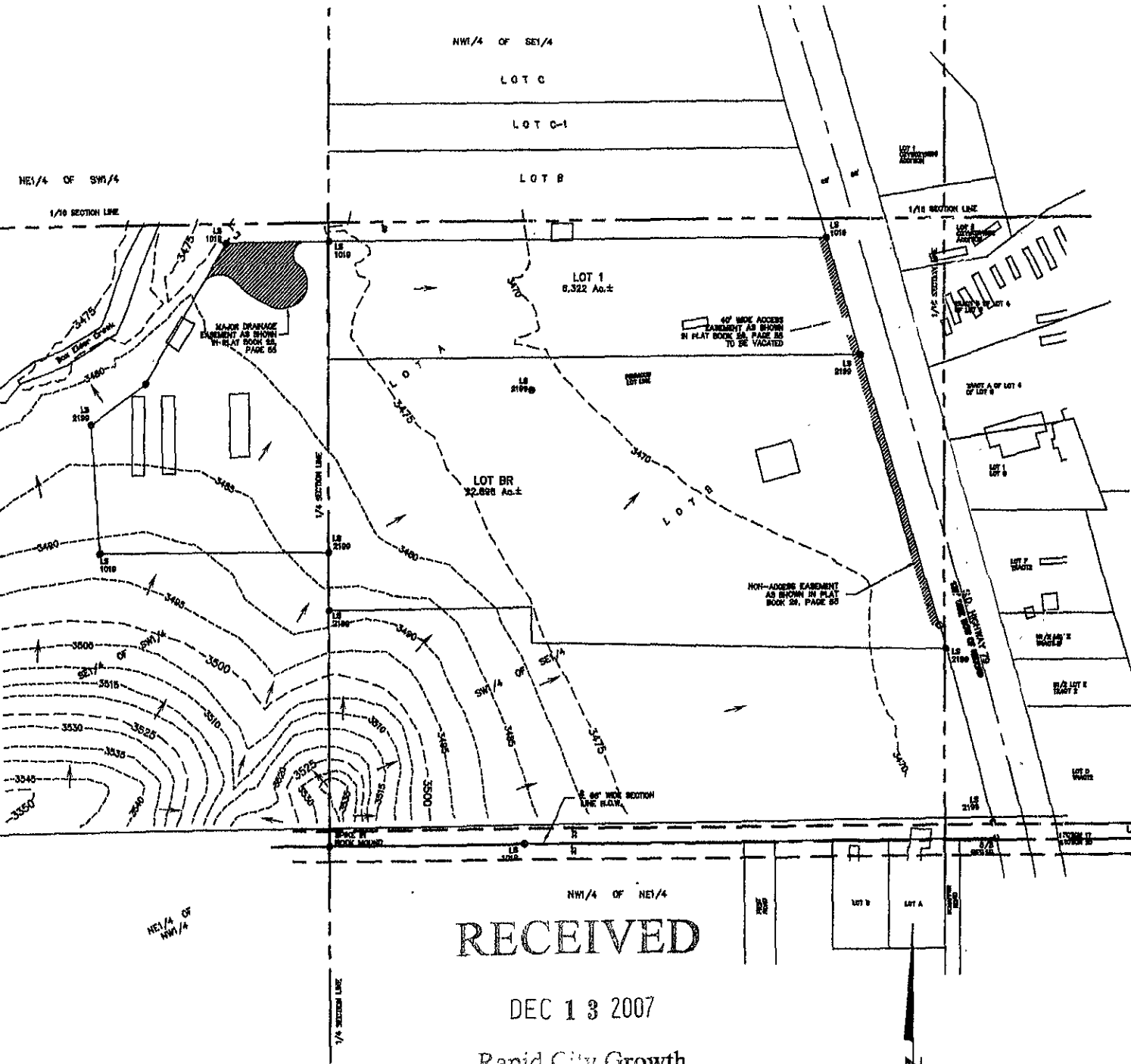


POST MINING DRAINAGE PLAN
LOT 1 AND LOT BR OF
KELLER SUBDIVISION
LOCATED IN THE S1/2 OF THE SE1/4
SECTION 17, T2N, R7E, BHM
RAPID CITY, PENNINGTON COUNTY, SOUTH DAKOTA



RECEIVED

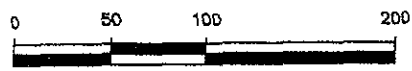
DEC 13 2007

Rapid City Growth
Management Department

Renner & Associates, LLC.

616 Sixth St. * Rapid City, SD 57701 * 605/721-7310
FAX: 605/721-7313 * E-MAIL: Gary@RennerAssoc.com

DECEMBER 13, 2007



SCALE 1" = 100'

