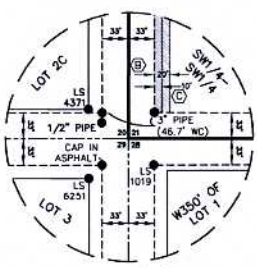
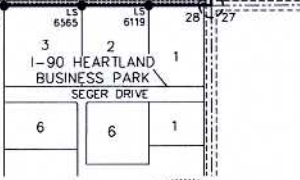
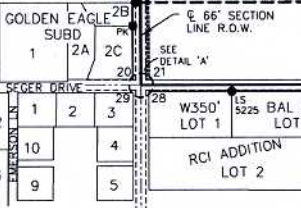
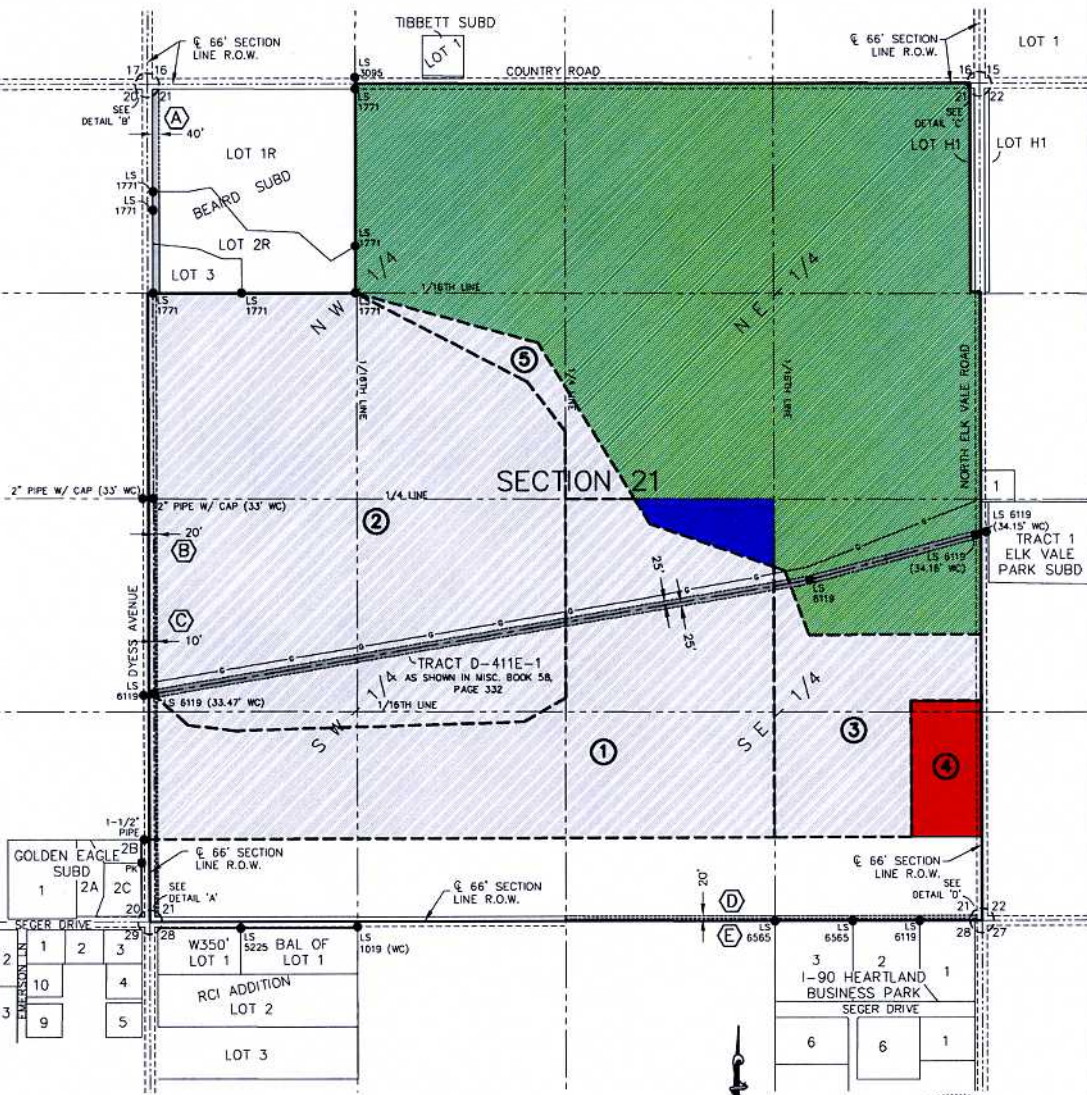
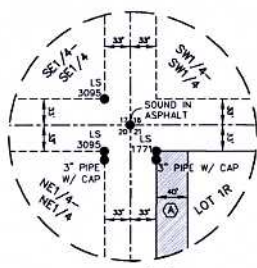


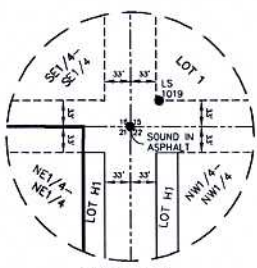
FUTURE LAND USE
SECTION 21
T2N, R8E, BHM
 PENNINGTON COUNTY, SOUTH DAKOTA



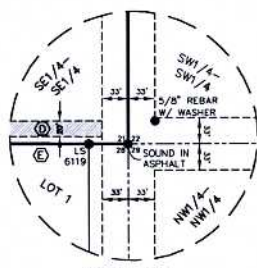
DETAIL 'A'
SCALE: 1"=100'



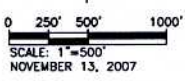
DETAIL 'B'
SCALE: 1"=100'



DETAIL 'C'
SCALE: 1"=100'



DETAIL 'D'
SCALE: 1"=100'



ZONING NOTES

- ① PUBIC TO LL
 - ② L.D.R. TO LL
 - ③ R.R. TO LL
 - ④ R.R. TO G.C.
- G.C.
 R.R.
 LI.
 PUBLIC

SHOWN EASEMENTS

- (A) 40' WIDE WEST RIVER ELECTRIC R.O.W. EASEMENT AS SHOWN IN MISC. BOOK 11, PAGE 4910
- (B) 20' WIDE M.D.U. PIPELINE EASEMENT AS SHOWN IN MISC. BOOK 93, PAGE 8388, MISC. BOOK 93, PAGE 8390, & MISC. BOOK 93, PAGE 8391
- (C) 10' WIDE WEST RIVER ELECTRIC R.O.W. EASEMENT AS SHOWN IN MISC. BOOK 11, PAGE 4905 & MISC. BOOK 11, PAGE 4910
- (D) 20' WIDE EASEMENT FOR PUBLIC & PRIVATE UTILITIES AS SHOWN IN MISC. BOOK 137, PAGE 1298
- (E) PREVIOUSLY VACATED 66' WIDE SECTION LINE R.O.W. AS SHOWN IN MISC. BOOK 140, PAGE 1681



BLANKET EASEMENTS

1. MONTANA-DAKOTA UTILITIES CO. PIPELINE AND TELEPHONE LINE EASEMENT AS SHOWN IN MISC. BOOK 49, PAGE 226.
LOCATED IN THE SW/4 & SE/4 OF NE/4, SECTION 21.
2. MONTANA-DAKOTA UTILITIES CO. PIPELINE AND TELEPHONE LINE EASEMENT AS SHOWN IN MISC. BOOK 58, PAGE 328.
LOCATED IN THE SW/4 OF NE/4 & THE SE/4 OF NE/4 & THE NW/4 OF SE/4, SECTION 21.
3. MONTANA-DAKOTA UTILITIES CO. PIPELINE AND TELEPHONE LINE EASEMENT AS SHOWN IN MISC. BOOK 58, PAGE 328.
LOCATED IN THE NW/4 OF NE/4, SECTION 21.
4. MONTANA-DAKOTA UTILITIES CO. PIPELINE AND TELEPHONE LINE EASEMENT AS SHOWN IN MISC. BOOK 58, PAGE 328.
LOCATED IN THE SW/4 OF NE/4 & THE NW/4 OF SE/4, SECTION 21.
5. BLACK HILLS UTILITIES EASEMENT AS SHOWN IN MISC. BOOK V, PAGE 6.
LOCATED IN THE SW/2 OF NE/4 & THE NW/4 OF SE/4, SECTION 21.