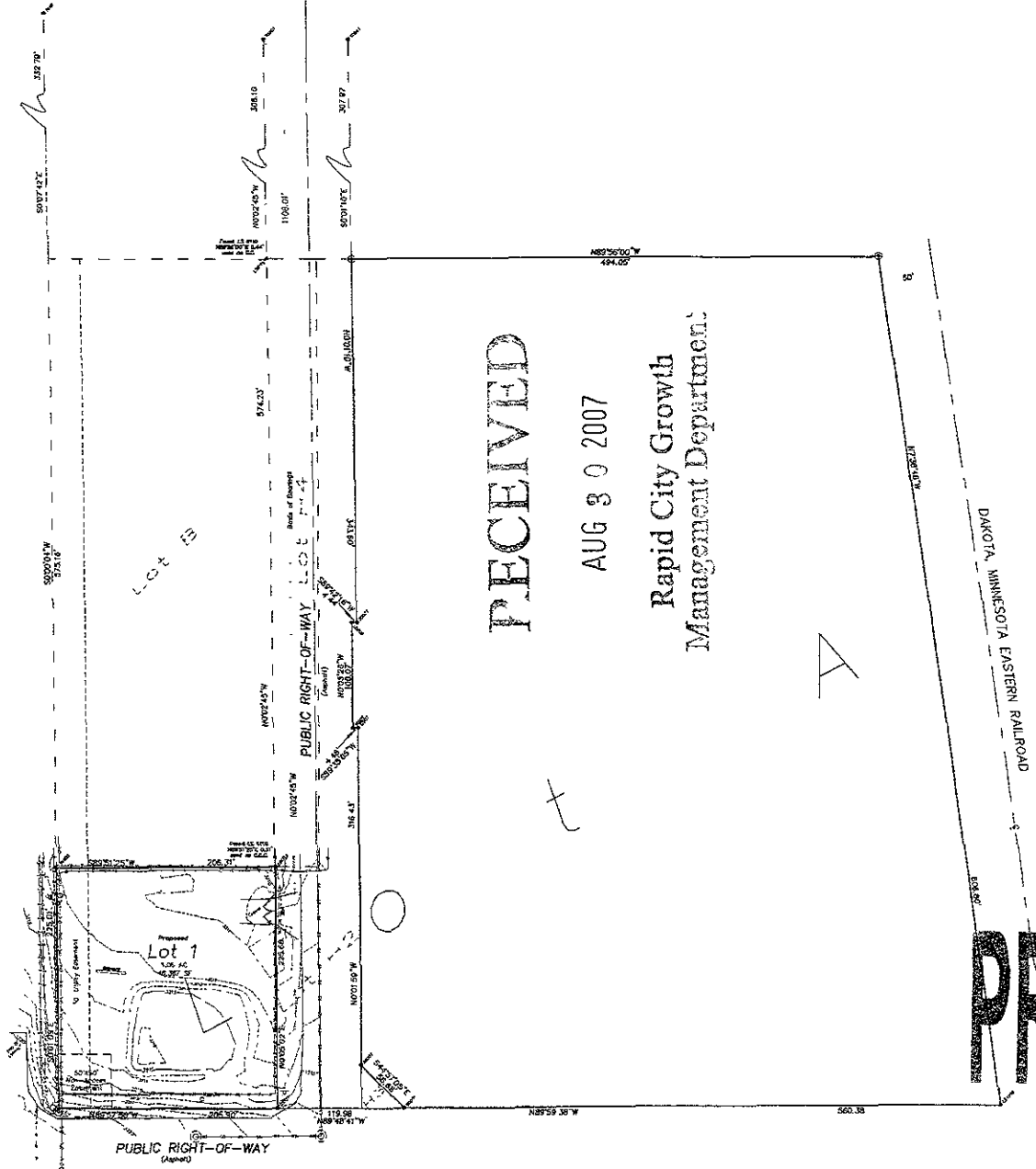


HIGHWAY 78
Section 18
T17N R17E

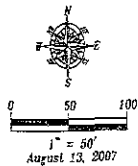


RECEIVED

AUG 30 2007

Rapid City Growth
Management Department

PRELIMINARY



SURVEYOR'S NOTES

Utilities shown are from visual inspection, sketches provided by individual service providers and Utility Locates performed by South Dakota One Call, Ticket Number 000000000. The actual location of utilities and service lines may vary from the information shown hereon. We assume no liability for utilities and services that are not marked or are incorrectly derived by utility locators.

Bench Mark: Station 1039 (NGVD29 5186.02) (NAD83 3187.567)

All bearings and distances shown are measured this survey
See Plat Book 28 Page 27 for record information

LEGEND

- ⊙ = Sanitary Sewer Manhole (Unless noted)
- ⊙ = Fire Hydrant
- ⊙ = Water Valve
- ⊙ = Utility Pole
- ⊙ = Gas Valve
- ⊙ = Fiberoptic Vault
- ⊙ = Sign
- = Fence Line
- = Underground Electric
- = Overhead Utility Line
- = Underground Telephone
- = Sanitary Sewer Line
- = Water Main
- = Natural Gas Line
- ⊙ = Found Survey Monument as noted
- ⊙ = Set Rebar with cap marked "RW Fisk 6565"

Topographic Map and Boundary Survey
Lot A. of Bierbaum Subdivision
less Lot #2 and Lot #3
Located in NW1/4 SW1/4 of Section 17, T1N, R6E, B1M.
Rapid City, Pennington County, South Dakota

Surveyed by	MLB
Date	8/10/07
Drawn by	RWF/BL
Date	8/13/07
Checked by	RWF
Revisions	

Project No
07-08-02

Sheet
1
of
1

Fisk Land Surveying, Inc. &
Consulting Engineers, Inc.
1022 4th St. SW - P.O. Box 8154
Rapid City, South Dakota 57701-1112 (S)
(605) 342-8154
http://www.fiskland.com