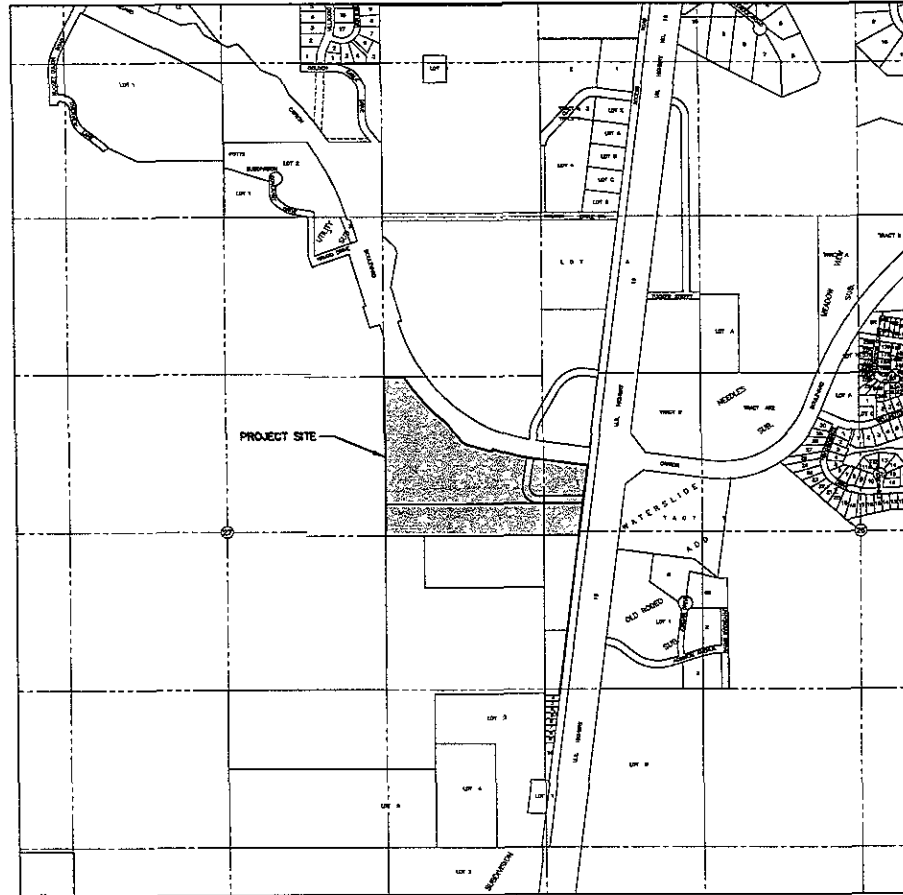


# PROPOSED TLC SUBDIVISION

## RAPID CITY, SOUTH DAKOTA



# RECEIVED

NOV 09 2007

Rapid City Growth  
Management Department

INDEX OF SHEETS

1. TITLE SHEET
2. LAYOUT PLAT
3. LAYOUT PLAT WITH LARGER AREA

MCNITY MAP  
SCALE: 1" = 300'

**FMG, Inc**  
 3700 Bluff's Road  
 Rapid City, SD 57702-2017  
 (605) 342-4422  
 www.fmgengineer.com

File Number	3009
Location	NE 1/4 SEC. 37, T1N, R7E, S30E
	NE 1/4 SEC. 38, T1N, R7E, S30E
Surveyed By	DL
Date	AUG. 2007, OCT. 2007
Designed By	
Drawn By	KC
Checked By	JL

**PROPOSED TLC SUBDIVISION**  
**RAPID CITY, SD**

Revision / Date	
Sheet Name	TITLE SHEET
Sheet Number	1 of 3