

Plat of Lot 1 of Lot A of Biernbaum Subdivision (formerly a portion of Lot A of Biernbaum Subdivision less Lot H2 and Lot H3) located in the NW1/4 SW1/4 of Section 17, T1N, R8E, BHM Rapid City, Pennington County, South Dakota

Prepared by:
Fisk Land Surveying &
Consulting Engineers, Inc.
P.O. Box 8194
Rapid City, South Dakota 57709
605-348-1338
Project # 07-06-02

LEGEND

- = Found Survey Monument as noted
- ⊙ = Set Rebar with cap marked "RW Fisk 6565"

SURVEYOR'S NOTES

Utility and Minor Drainage Easements 8' on the interior side of all lot lines

All Major Drainage Easements shown hereon shall be kept free of all obstructions including but not limited to buildings, walls, fences, hedges, trees & shrubs these easements grant to all public authorities the right to construct, operate, maintain, inspect and repair such improvements and structures as it deems expedient to facilitate drainage from any source

See Plat Book 28 Page 27 for record information

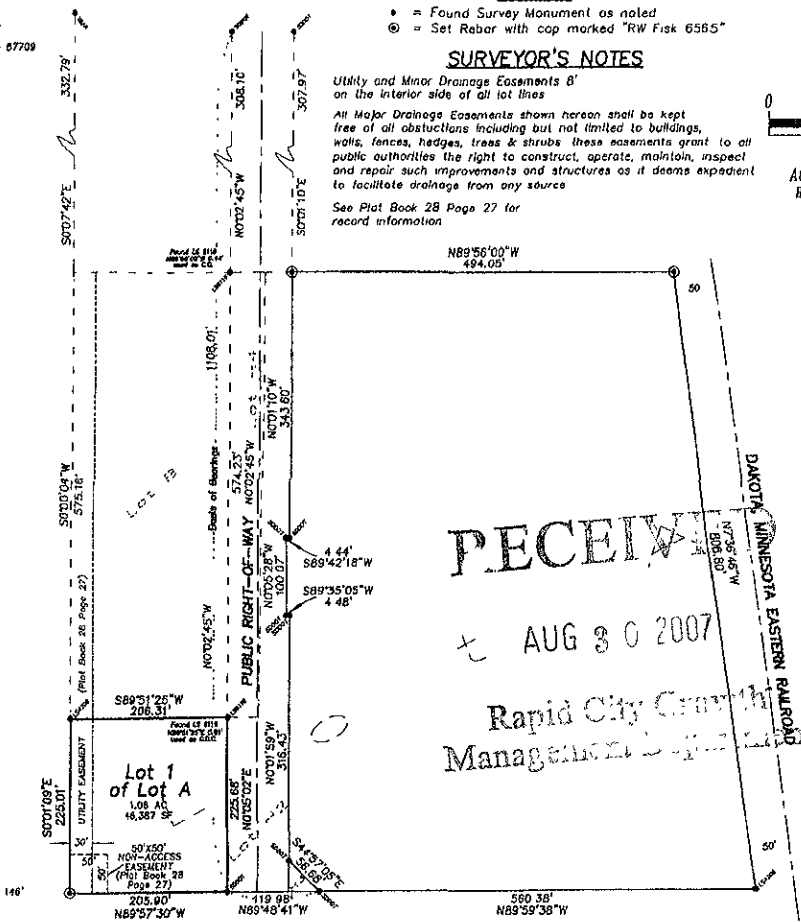


1" = 100'
August 20, 2007
Basis of Bearings
as shown

PRELIMINARY

Section 16
Section 17
Section 18
Section 19

HIGHWAY 79



RECEIVED

AUG 30 2007

Rapid City Growth Management Department

PUBLIC RIGHT-OF-WAY (30' ROW)