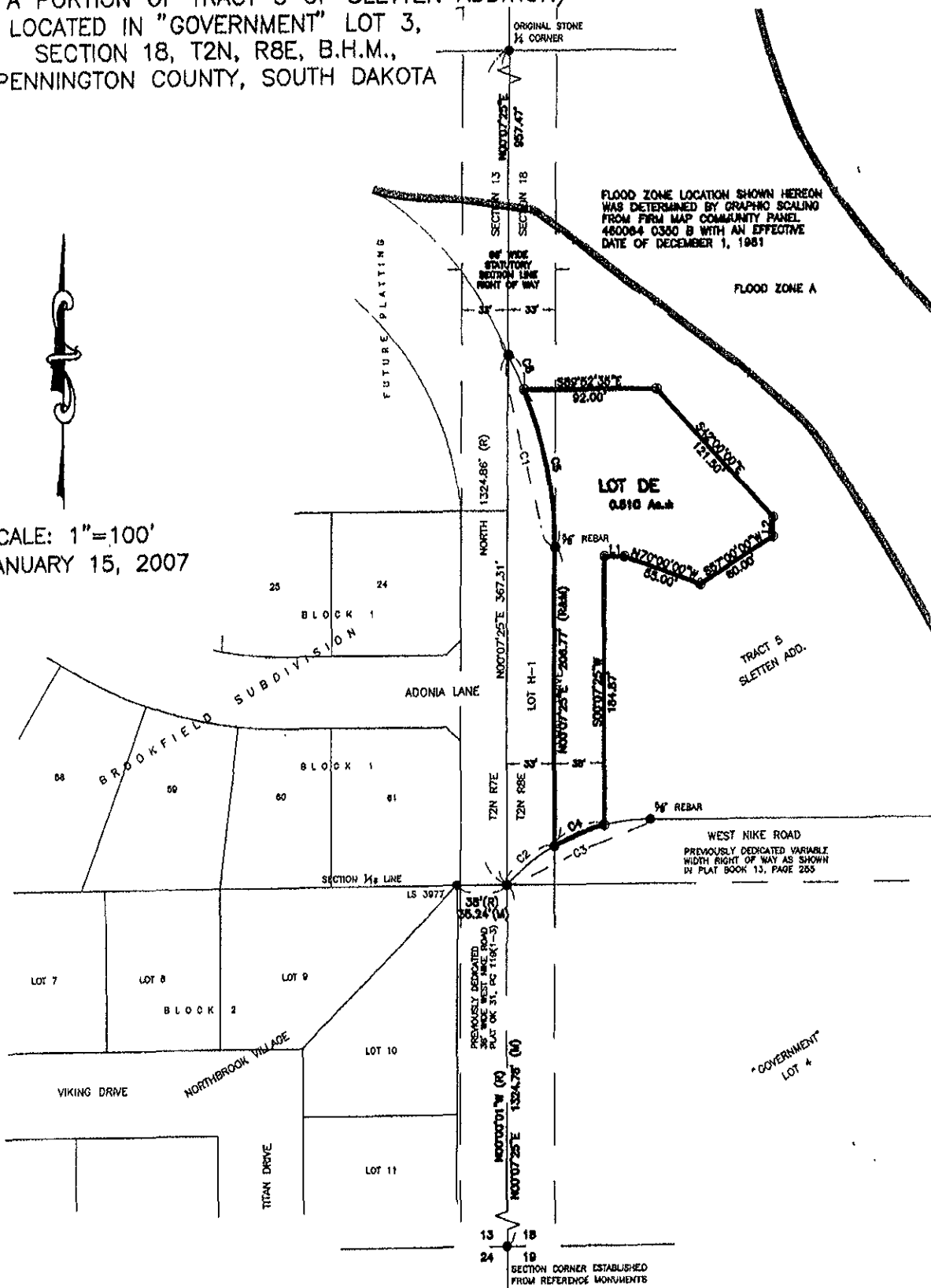


# PLAT OF LOT DE OF TRACT 5, SLETTEN ADDITION

(FORMERLY A PORTION OF TRACT 5 OF SLETTEN ADDITION)  
LOCATED IN "GOVERNMENT" LOT 3,  
SECTION 18, T2N, R8E, B.H.M.,  
PENNINGTON COUNTY, SOUTH DAKOTA



SCALE: 1"=100'  
JANUARY 15, 2007



FLOOD ZONE LOCATION SHOWN HEREON  
WAS DETERMINED BY GRAPHIC SCALING  
FROM FIRM MAP COMMUNITY PANEL  
450004-0330 B WITH AN EFFECTIVE  
DATE OF DECEMBER 1, 1981

WEST NIKE ROAD  
PREVIOUSLY DEDICATED VARIABLE  
WIDTH RIGHT OF WAY AS SHOWN  
IN PLAT BOOK 13, PAGE 255

PREVIOUSLY DEDICATED  
36' WIDE WEST NIKE ROAD  
PLAT OF S.L. PG 118K(-3)