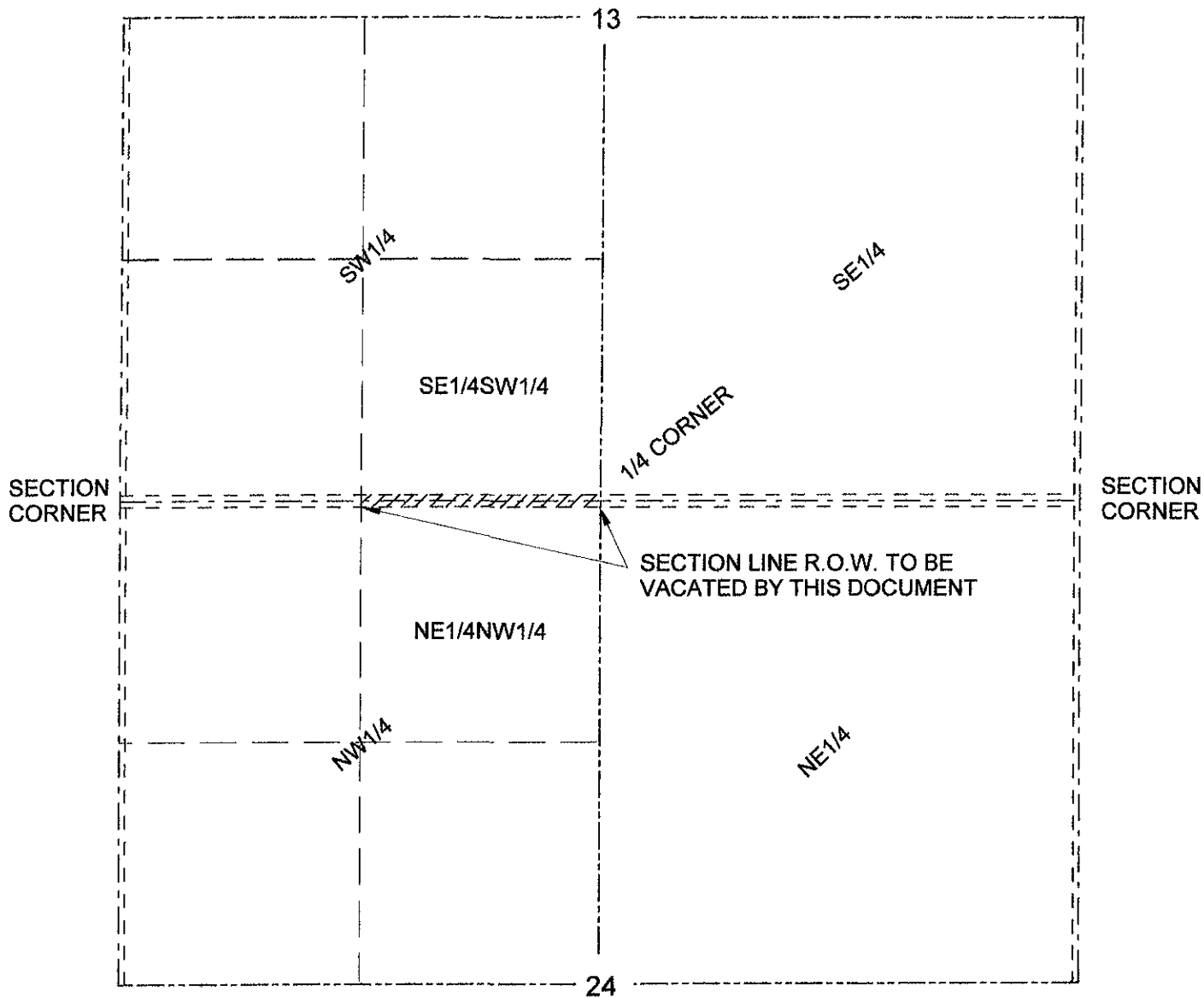


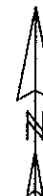
EXHIBIT A

VACATION OF SECTION LINE RIGHT-OF-WAY
SE1/4SW1/4 OF SECTION 13 AND NE1/4NW1/4 OF SECTION 24
T1N, R7E, B.H.M. RAPID CITY, PENNINGTON COUNTY, SOUTH DAKOTA



Prepared by: Hanson Surveying & Mapping
832 Horace Mann Drive
Rapid City, SD 57701
605-388-9652

October 26, 2007



NOT TO SCALE