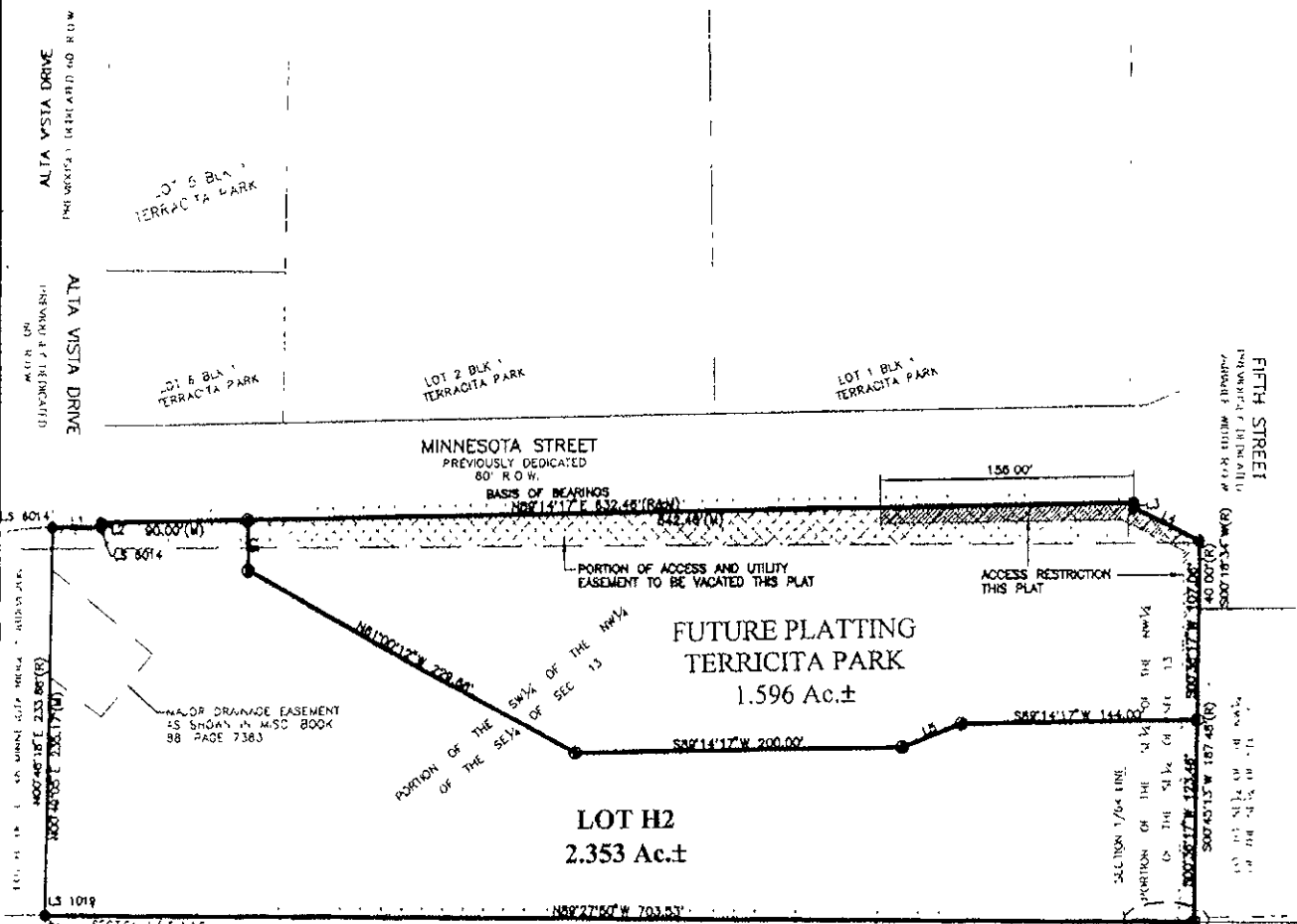


PLAT OF
 LOT H2 OF THE S1/2 OF THE NW1/4 OF THE SE1/4 OF SECTION 13,
 (FORMERLY A PORTION OF
 THE SW1/4 OF THE NW1/4 OF THE SE1/4 OF SECTION 13,
 AND A PORTION OF THE SE1/4 OF THE NW1/4 OF THE SE1/4 OF SECTION 13)
 LOCATED IN THE S1/2 OF THE NW1/4 OF THE SE1/4,
 SECTION 13, T1N, R7E, B.H.M.,
 RAPID CITY, PENNINGTON COUNTY, SOUTH DAKOTA.



LOT H2
 2.353 Ac.±

FUTURE PLATTING
TERRICITA PARK
 1.596 Ac.±

LINE	LENGTH	BEARING
L1(W)	30.01	S89°43'00"E
L1(R)	30.00	S89°48'30"E
L2(R&H)	2.96	N00°18'30"E
L3(R&H)	2.87	S00°18'30"E
L4(R&H)	44.63	S89°50'20"E
L5	36.84	S89°00'47"W
L6	30.00	N00°40'47"W

SEPTEMBER 26, 2007
 N.T.S.