

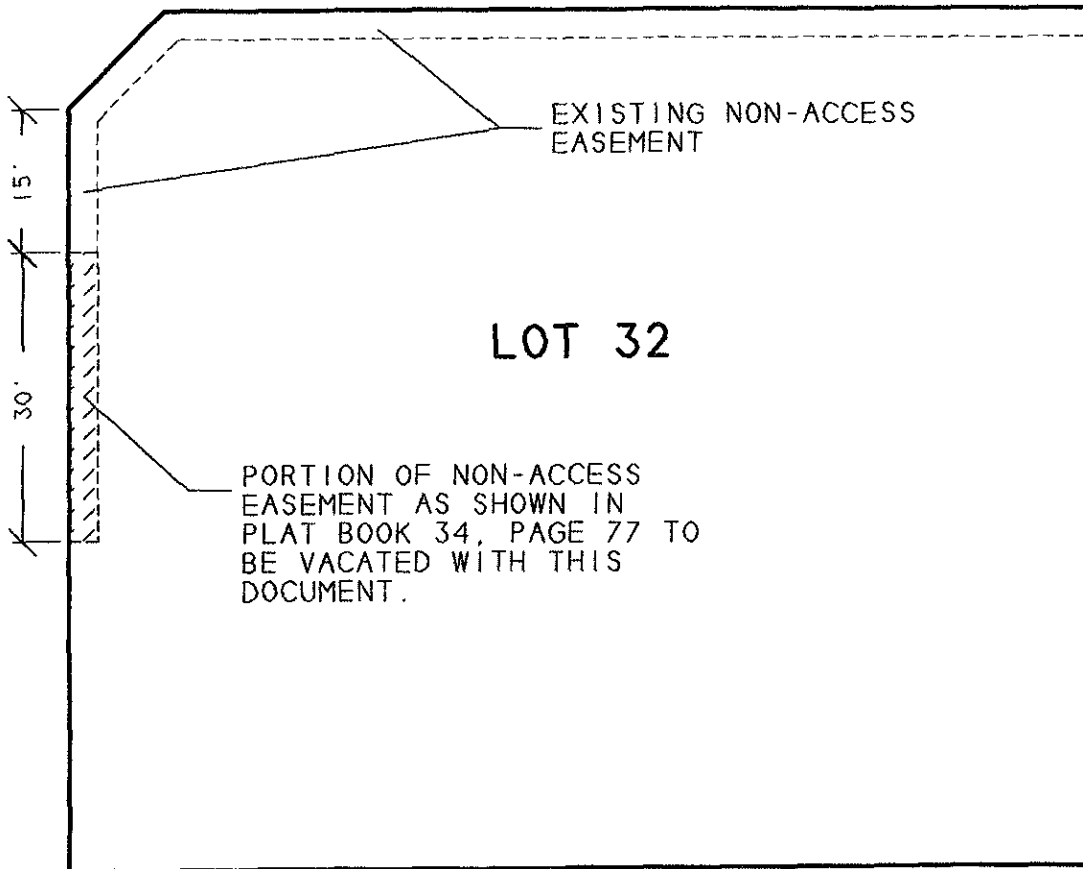
EXHIBIT 'A'
 OF
 VACATION OF A PORTION OF NON-ACCESS EASEMENT
 LOT 32
 ROCKINON RANCH ESTATES
 IN THE N 1/2 NE 1/4 SE 1/4 SECTION 23
 ALL LOCATED IN T2N, R7E, BHM
 RAPID CITY PENNINGTON COUNTY, SOUTH DAKOTA



SCALE: 1" = 20'
 OCTOBER 12, 2007

L E N N O N L A N E
 (52 R.O.W.)

H E N D R I X L A N E
 (52 R.O.W.)



LOT 32

PORTION OF NON-ACCESS
 EASEMENT AS SHOWN IN
 PLAT BOOK 34, PAGE 77 TO
 BE VACATED WITH THIS
 DOCUMENT.

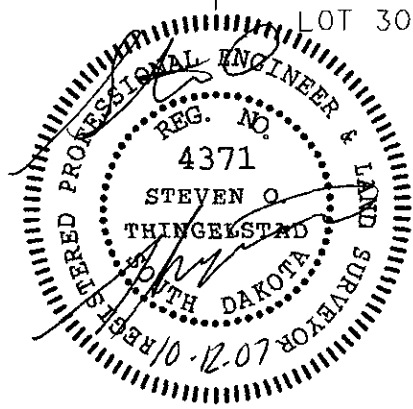
EXISTING NON-ACCESS
 EASEMENT

15'
 30'

LOT 31

LOT 33

LOT 30



PREPARED BY STEVEN O THINGELSTAD
 BRITTON ENGINEERING & LAND SURVEYING, INC
 8035 BLACK HAWK ROAD, SUITE 5
 BLACK HAWK, SOUTH DAKOTA 57718
 TELEPHONE: (605) 716-7988