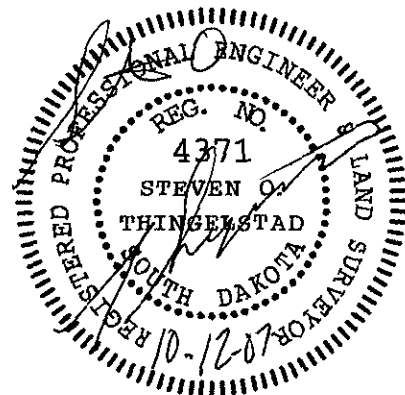
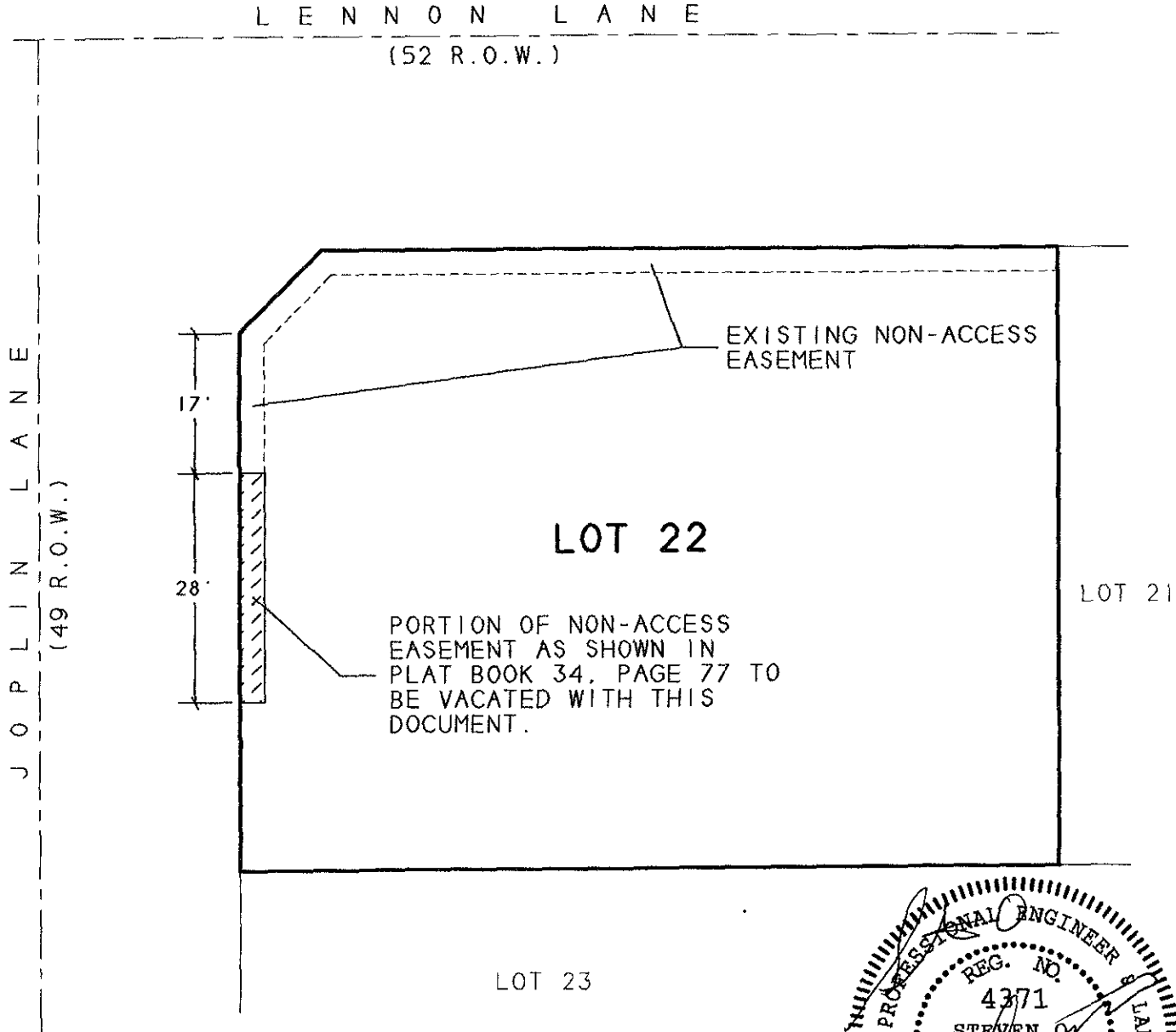


EXHIBIT 'A'
OF
VACATION OF A PORTION OF NON-ACCESS EASEMENT
LOT 22
ROCKINON RANCH ESTATES
IN THE N 1/2 NE 1/4 SE 1/4 SECTION 23
ALL LOCATED IN T2N, R7E, BHM
RAPID CITY PENNINGTON COUNTY, SOUTH DAKOTA



SCALE: 1" = 20'
OCTOBER 12, 2007



PREPARED BY: STEVEN O. THINGELSTAD
BRITTON ENGINEERING & LAND SURVEYING, INC.
8035 BLACK HAWK ROAD, SUITE 5,
BLACK HAWK, SOUTH DAKOTA 57718
TELEPHONE (605) 716-7088