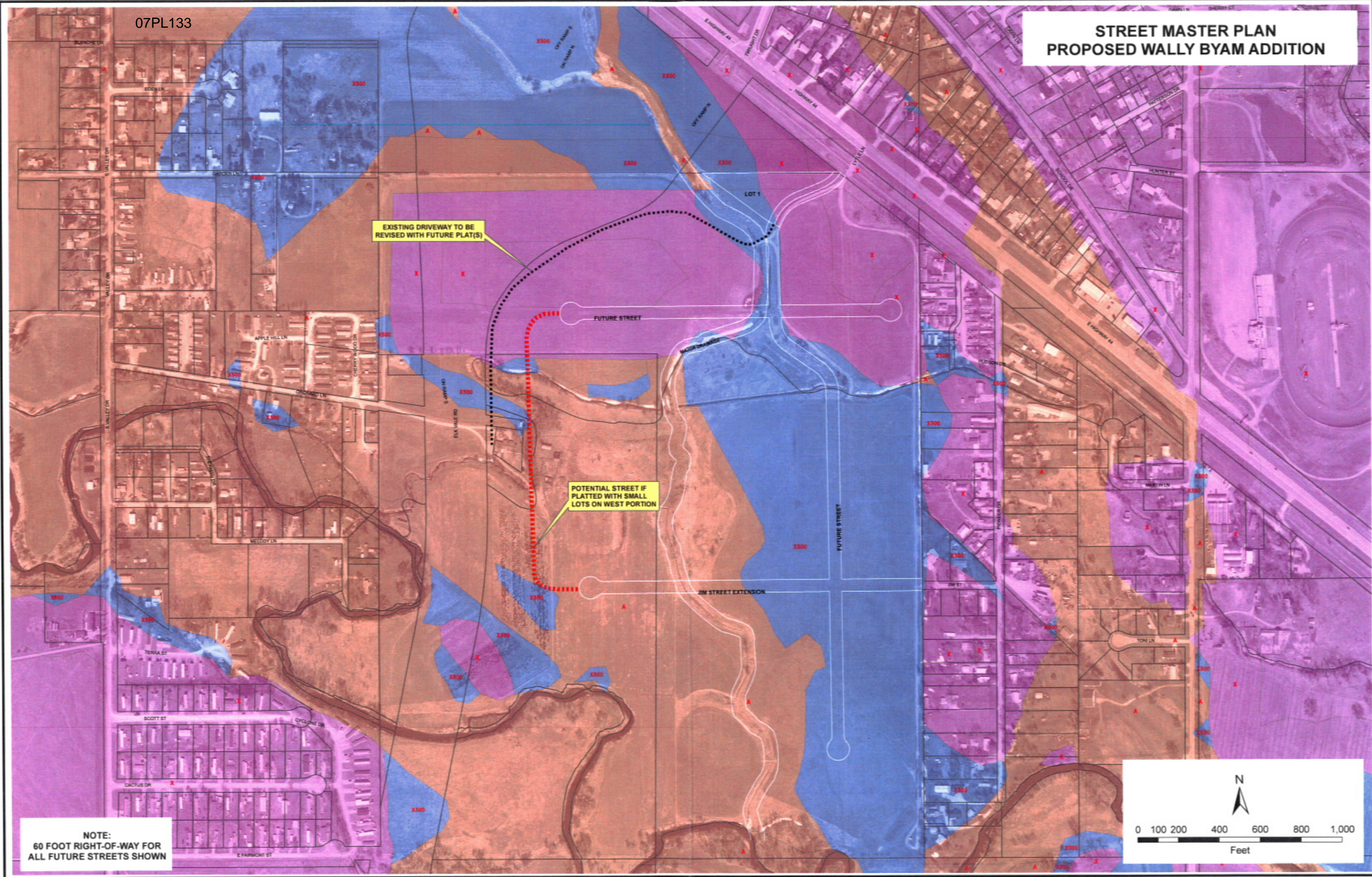


STREET MASTER PLAN PROPOSED WALLY BYAM ADDITION



EXISTING DRIVEWAY TO BE REVISED WITH FUTURE PLAT(S)

FUTURE STREET

POTENTIAL STREET IF PLATTED WITH SMALL LOTS ON WEST PORTION

JIM STREET EXTENSION

NOTE:
60 FOOT RIGHT-OF-WAY FOR ALL FUTURE STREETS SHOWN

