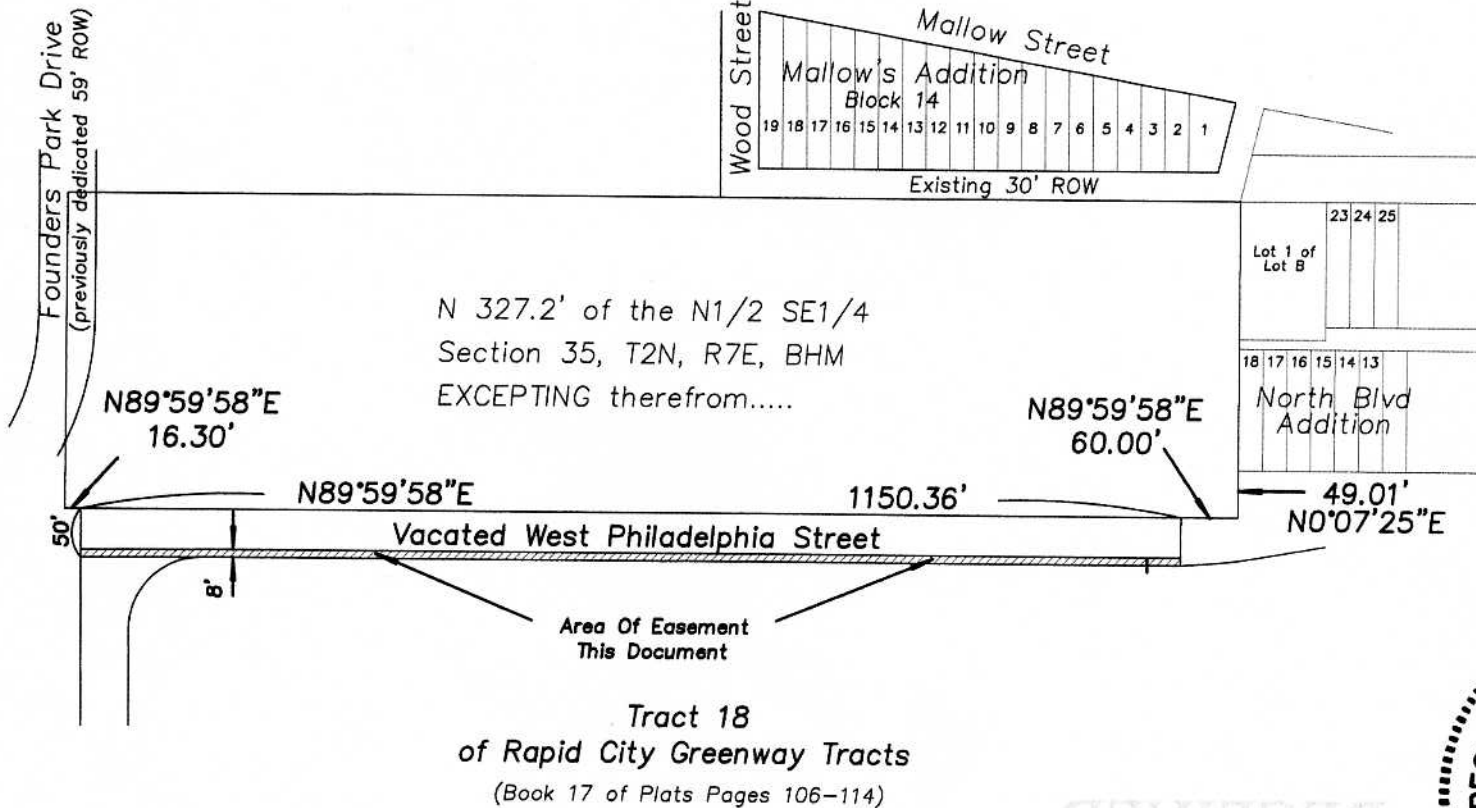
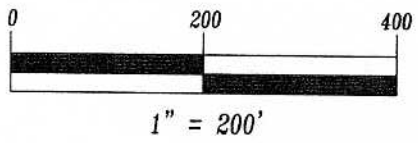
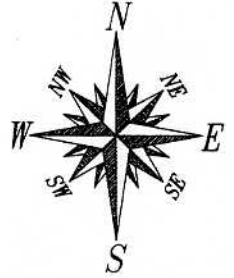


Pedestrian Access Easement

Adjoining Tract 18 of Rapid City Greenway Tracts located in Section 35, T2N, R7E, BHM, Rapid City, Pennington County, South Dakota



RECEIVED
SEP 27 2007
Rapid City Growth
Management Department

Prepared by:
Fisk Land Surveying & Consulting Engineers, Inc.
P.O. Box 8154 Rapid City, South Dakota 57709
(605)348-1538 September 27, 2007