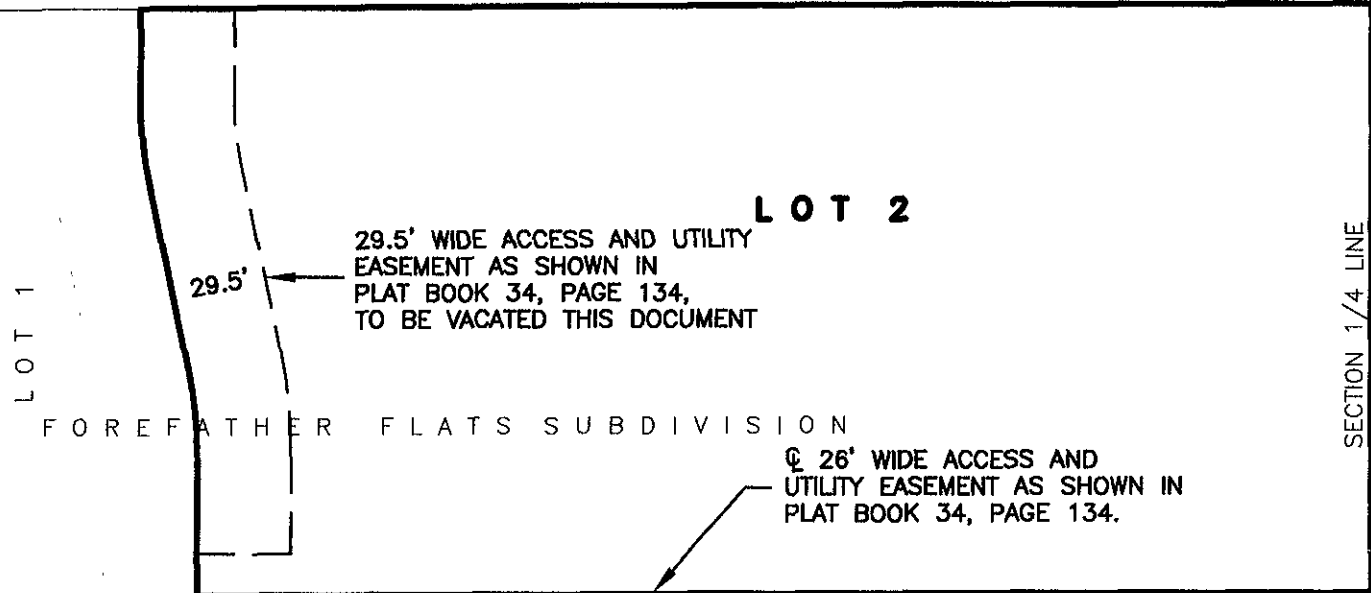


VACATION OF ACCESS AND UTILITY EASEMENT LOT 2 OF FOREFATHER FLATS SUBDIVISION IN THE NE1/4 OF THE SW1/4 SECTION 28, T2N, R8E, BHM, RAPID CITY, PENNINGTON COUNTY, SOUTH DAKOTA

EAST MALL DRIVE



UNPLATTED NW1/4-SE1/4
N OF 1-90 LESS NOT H13;
LOT E OF S1/2-SE1/4
2N-08E SECTION 28

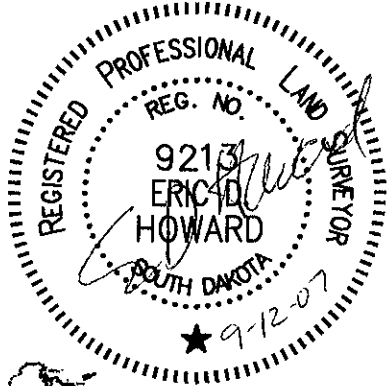
LOT 2

29.5' WIDE ACCESS AND UTILITY
EASEMENT AS SHOWN IN
PLAT BOOK 34, PAGE 134,
TO BE VACATED THIS DOCUMENT

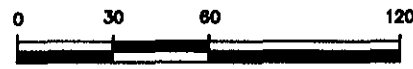
26' WIDE ACCESS AND
UTILITY EASEMENT AS SHOWN IN
PLAT BOOK 34, PAGE 134.

FOREFATHER FLATS SUBDIVISION

LOT 3



SEPTEMBER 12, 2007



SCALE 1" = 60'

Renner Associates, LLC.

616 Sixth St. * Rapid City, SD 57701 * 605/721-7310

FAX: 605/721-7313 * E-MAIL: Gary@RennerAssoc.com

Spearfish Office: 605/717-0016



CITY HALL 1903