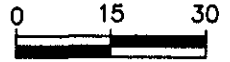


VACATION OF A PORTION OF NON-ACCESS RESTRICTION LOT A OF LOT 27 OF BLOCK 1, ELKS COUNTRY ESTATES

LOCATED IN E 1/2
SECTION 16, T1N, R8E, BHM,
RAPID CITY, PENNINGTON COUNTY, SOUTH DAKOTA

LOT B OF LOT 27
OF BLOCK 1

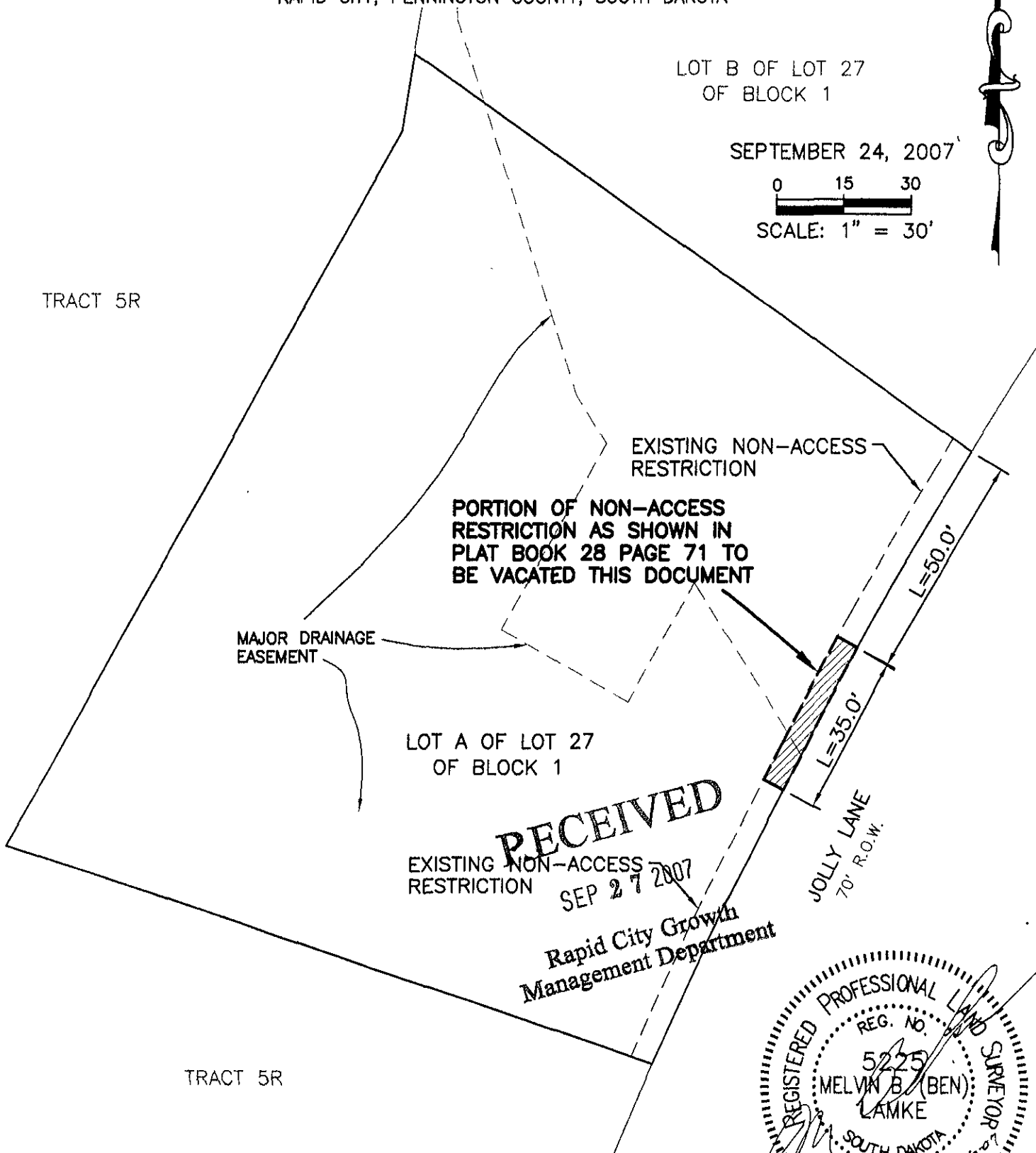
SEPTEMBER 24, 2007



SCALE: 1" = 30'



TRACT 5R



EXISTING NON-ACCESS RESTRICTION

PORTION OF NON-ACCESS RESTRICTION AS SHOWN IN PLAT BOOK 28 PAGE 71 TO BE VACATED THIS DOCUMENT

MAJOR DRAINAGE EASEMENT

LOT A OF LOT 27
OF BLOCK 1

RECEIVED

EXISTING NON-ACCESS RESTRICTION
SEP 27 2007

Rapid City Growth
Management Department

JOLLY LANE
70' R.O.W.

TRACT 5R

