

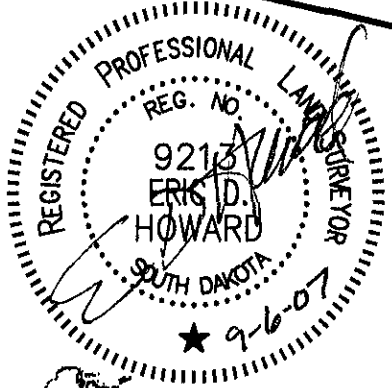
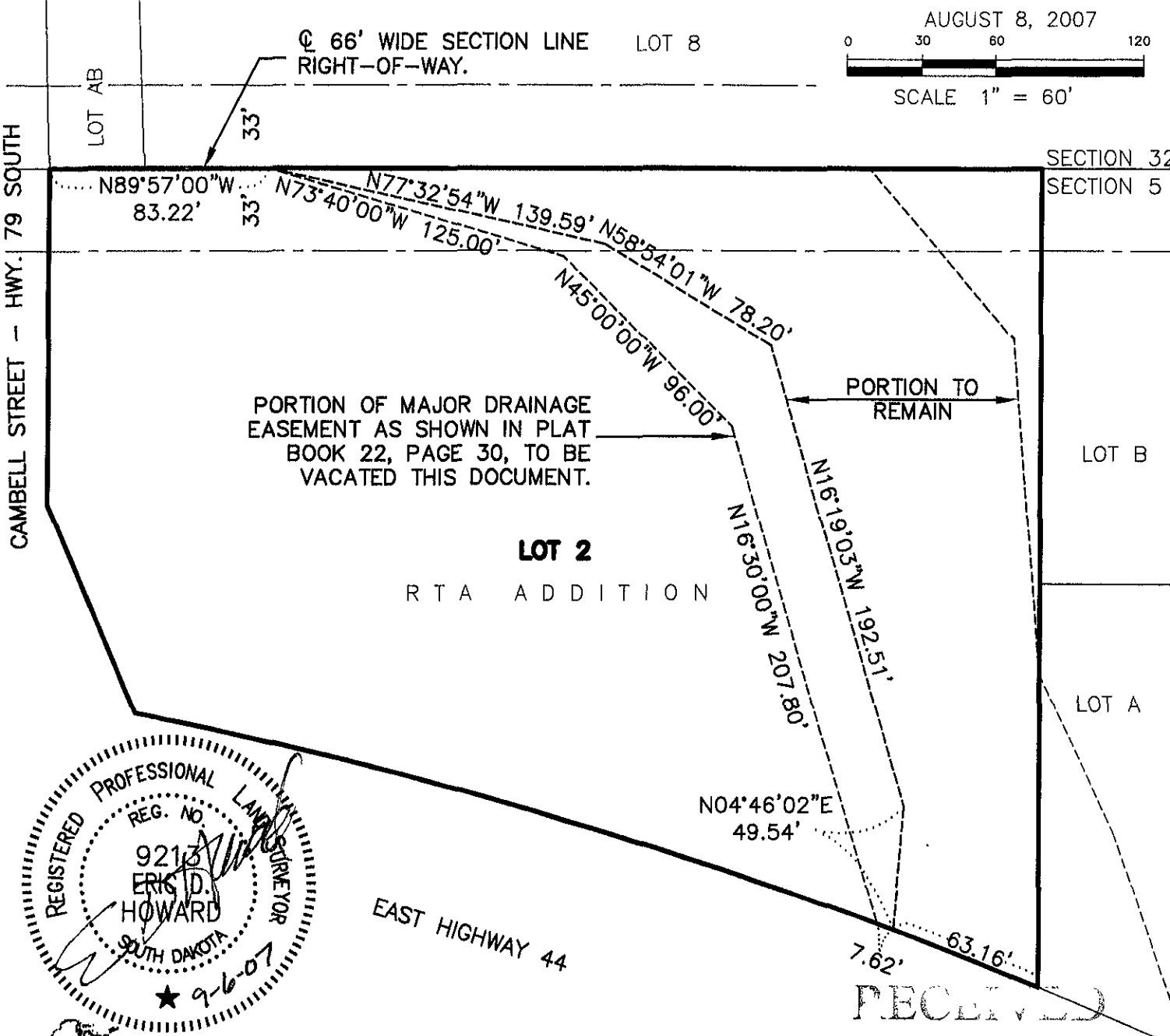
VACATION OF A PORTION OF THE MAJOR DRAINAGE EASEMENT OF LOT 2

RTA ADDITION

LOCATED IN THE NW1/4 OF NW1/4 (LOT 4) OF SECTION 5, T1N, R8E, BHM
RAPID CITY, PENNINGTON COUNTY, SOUTH DAKOTA



AUGUST 8, 2007
0 30 60 120
SCALE 1" = 60'



RECEIVED

Renner & Associates, LLC.

SEP 11 2007



616 Sixth St. * Rapid City, SD 57701 * 605/721-7310 Rapid City Growth

FAX: 605/721-7313 * E-MAIL: Gary@RennerAssoc.com

Spearfish Office: 605/717-0016