

RECEIVED  
SEP 28 2007

Rapid City Growth  
Management Department  
September 28, 2007  
Bearings - GPS Observation  
Contours NGVD29  
City Benchmark STA 1034

Elk Vale Exit/Access Ramp

S.D. Hwy. 44

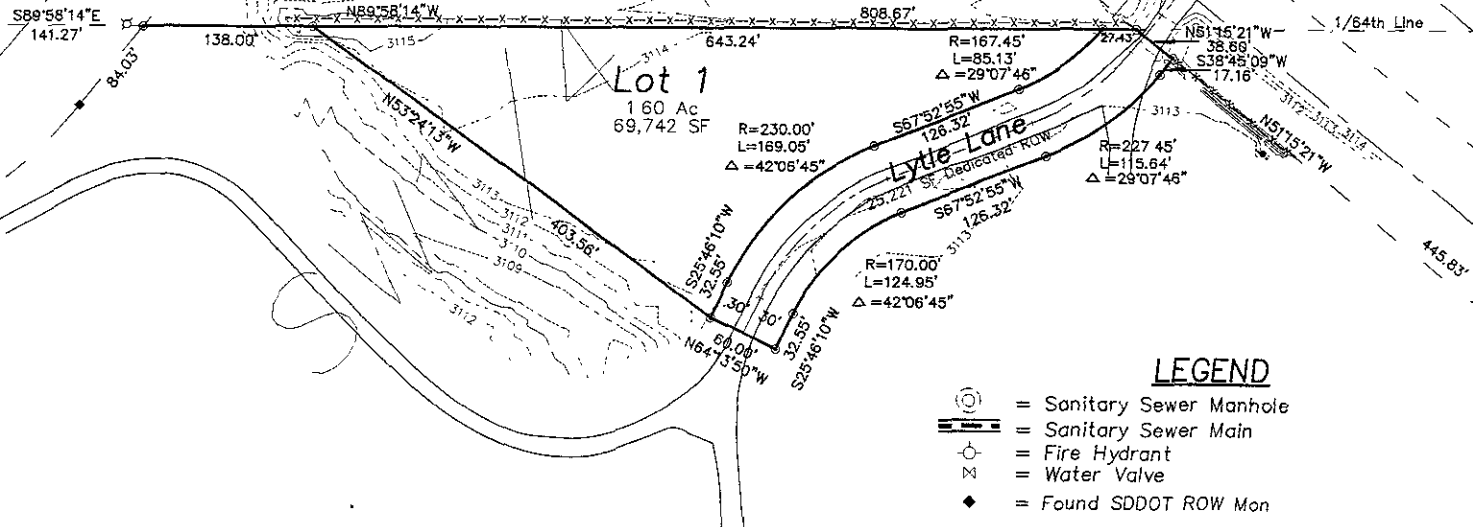
Division of Railroads for  
the State of South Dakota

1/4 Line

1/64th Line

N0°06'45"E  
3312.73'

1/16th Line



Lot 1  
160 Ac  
69,742 SF

Lytle Lane  
25.221' St. Dedicated ROW

**LEGEND**

- = Sanitary Sewer Manhole
- = Sanitary Sewer Main
- = Fire Hydrant
- = Water Valve
- = Found SDDOT ROW Mon
- = Found Survey Monument as noted
- = Set Rebar with cap marked "RW Fisk 6565"

Topographic Map

Proposed Lot 1 of Wally Byram Addition  
& Dedicated ROW - located in the S1/2  
SW1/4 NE1/4, Sec 9, T1N, R8E, BHM,  
Rapid City, Pennington County, South Dakota

1022 Main Street  
P.O. Box 6154  
Rapid City, South Dakota  
57703  
(605) 348-1538  
(605) 341-1112 (fx)

Fisk Land Surveying  
& Consulting  
Engineers, Inc.

Date	9/27/07
Surveyed by	ML,BL
Drawn by	RWF/BL
Checked by	WF/ML
Revisions	
Project No	07-08-04