

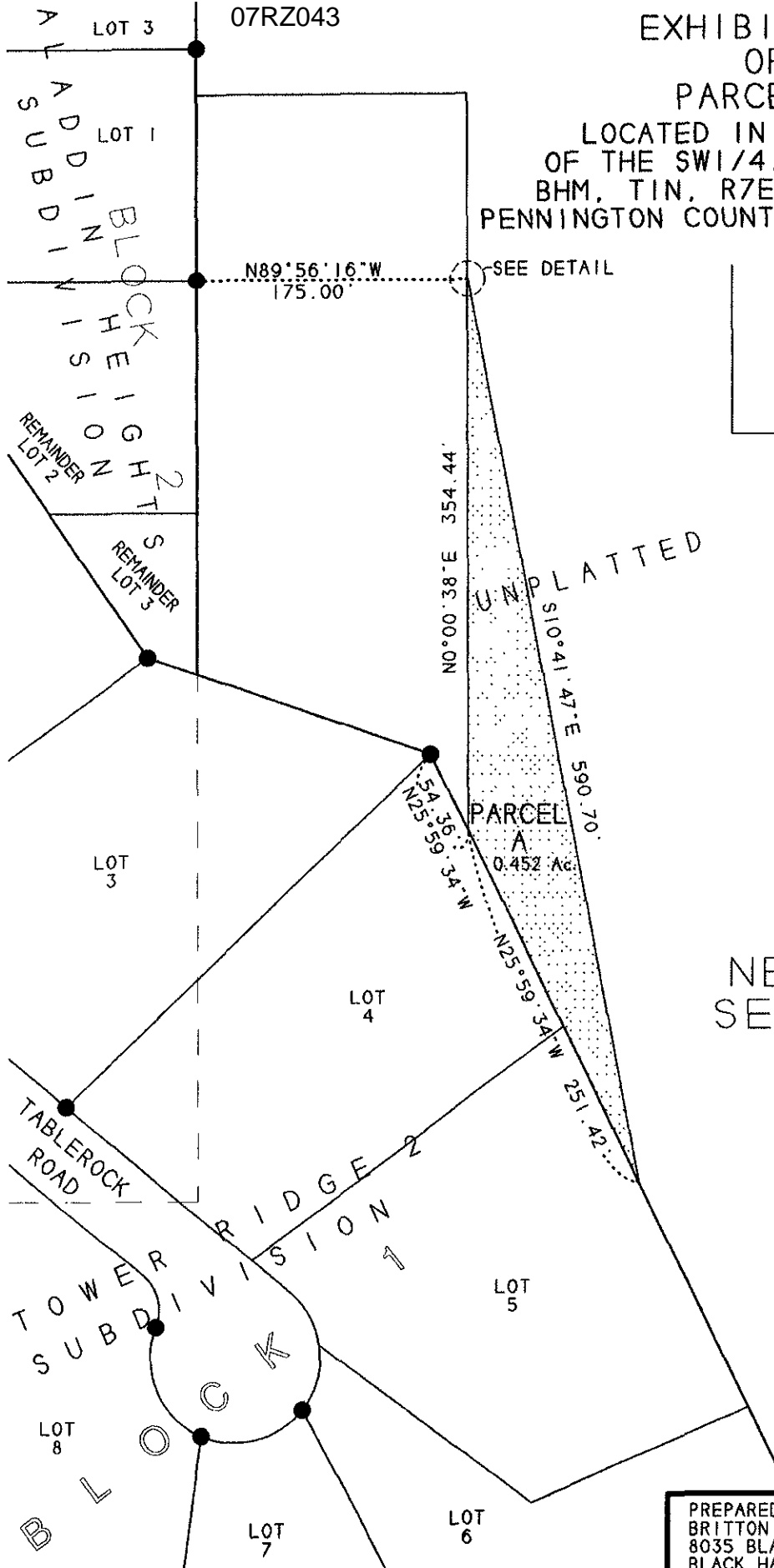
07RZ043

# EXHIBIT "A"

OF

## PARCEL A

LOCATED IN THE NE 1/4  
OF THE SW 1/4, SECTION 23  
BHM, T1N, R7E, RAPID CITY  
PENNINGTON COUNTY, SOUTH DAKOTA

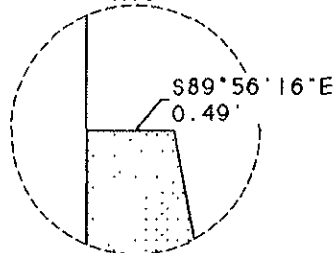


TRACT G

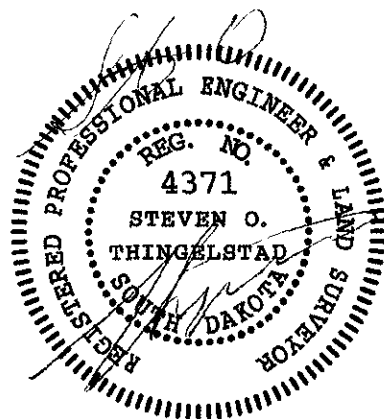


SCALE: 1" = 100'  
MAY 10, 2007

DETAIL  
NTS



### NE 1/4 OF SECTION 23



PREPARED BY: STEVEN O. THINGELSTAD  
 BRITTON ENGINEERING & LAND SURVEYING, INC.  
 8035 BLACK HAWK ROAD, SUITE 5  
 BLACK HAWK, SOUTH DAKOTA 57718  
 TELEPHONE: (605) 716-7988