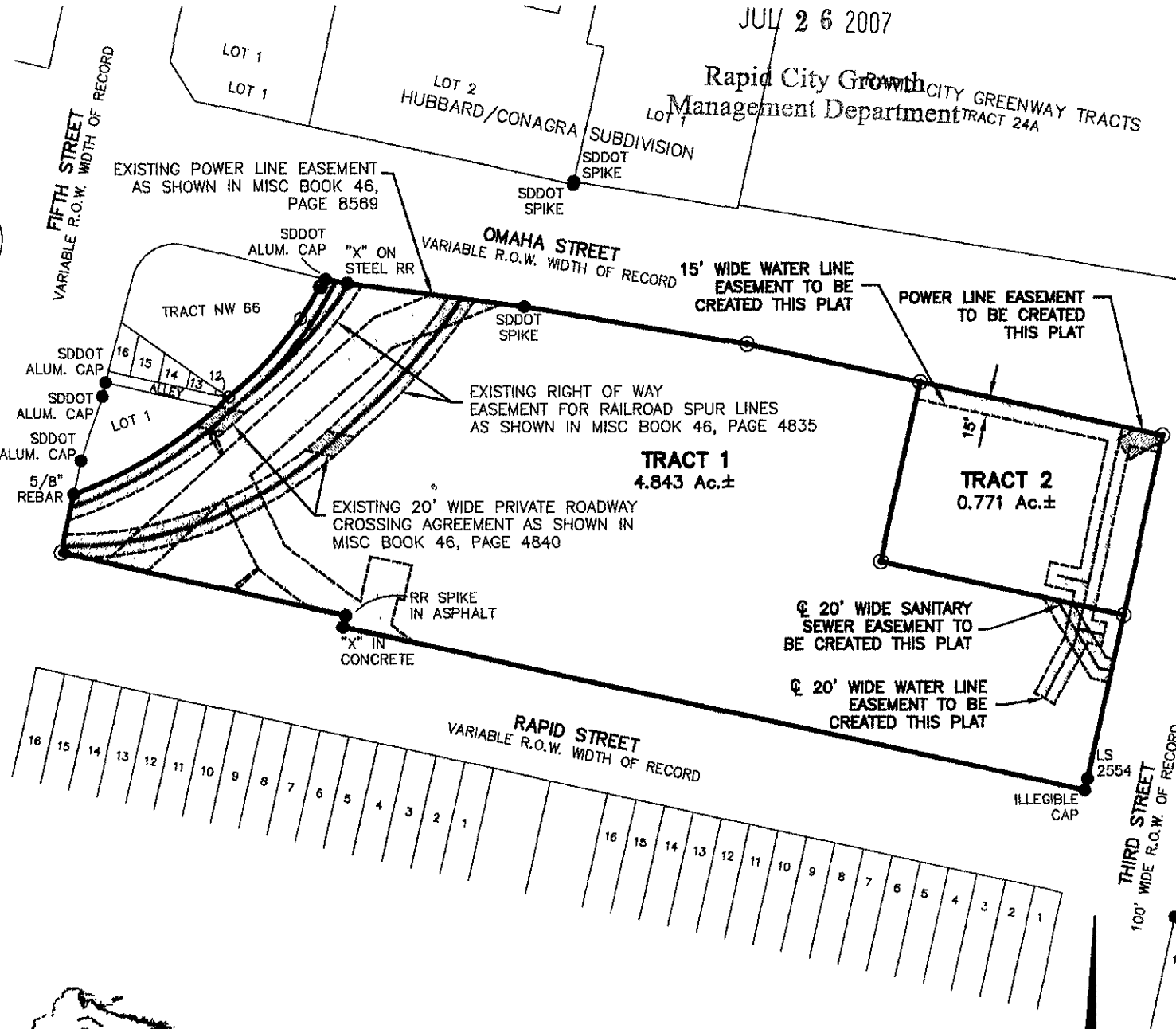


PLAT OF TRACTS 1 AND 2, TUSCANY SQUARE SUBDIVISION

(formerly the balance of Dan's Supermarket Tract Revised)
LOCATED IN BLOCKS 66 AND 67
OF THE ORIGINAL TOWNSITE OF
RAPID CITY, PENNINGTON COUNTY, SOUTH DAKOTA
RECEIVED

JUL 26 2007

Rapid City Growth Management Department
RAPID CITY GREENWAY TRACTS TRACT 24A



CITY HALL 1903

Renner Associates, LLC.

616 Sixth St. * Rapid City, SD 57701 * 605/721-7310
FAX: 605/721-7313 * E-MAIL: Gary@RennerAssoc.com
* Spearfish 605/717-0016 *

N.T.S.
JULY 26, 2007