

LOTS 9 THRU 13 OF BLOCK 7, LOTS 3 THRU 13 OF BLOCK 8,
LOTS 9 THRU 20 OF BLOCK 9, AND LOTS 5 THRU 9 OF BLOCK 13,

RED ROCK MEADOWS SUBDIVISION

(formerly a portion of NW1/4 of the NW1/4)

LOCATED IN NW1/4 OF THE NW1/4,

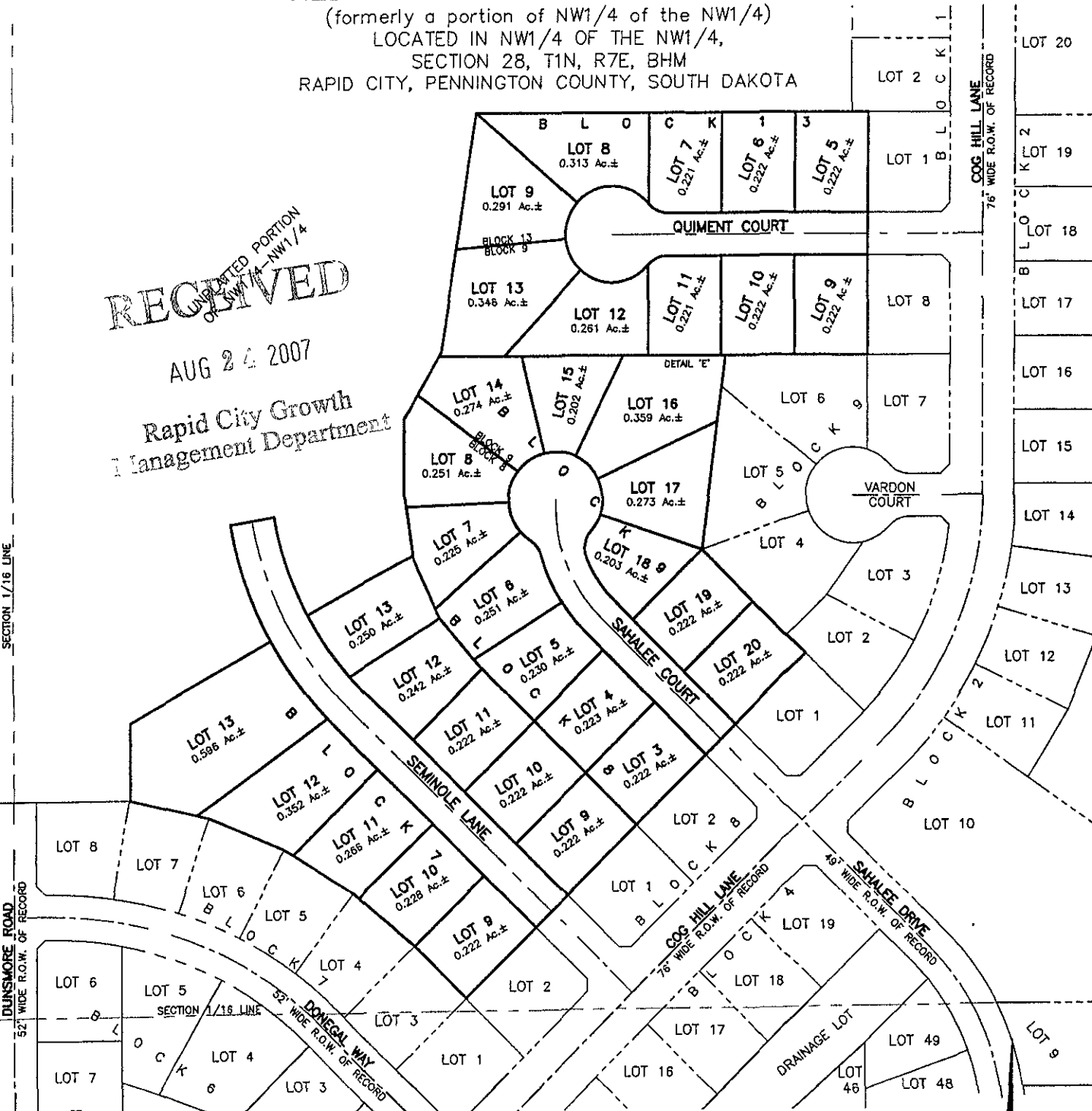
SECTION 28, T1N, R7E, BHM

RAPID CITY, PENNINGTON COUNTY, SOUTH DAKOTA

RECEIVED
UNDEVELOPED PORTION
OF NW1/4 - NW1/4

AUG 24 2007

Rapid City Growth
Management Department



SECTION 1/16 LINE

DUNSMORE ROAD
52' WIDE R.O.W. OF RECORD

Renner & Associates, LLC.

616 Sixth St. * Rapid City, SD 57701 * 605/721-7310
FAX: 605/721-7313 * E-MAIL: Gary@RennerAssoc.com
* Spearfish 605/717-0016 *



CITY HALL 1903

N.T.S.
AUGUST 23, 2007