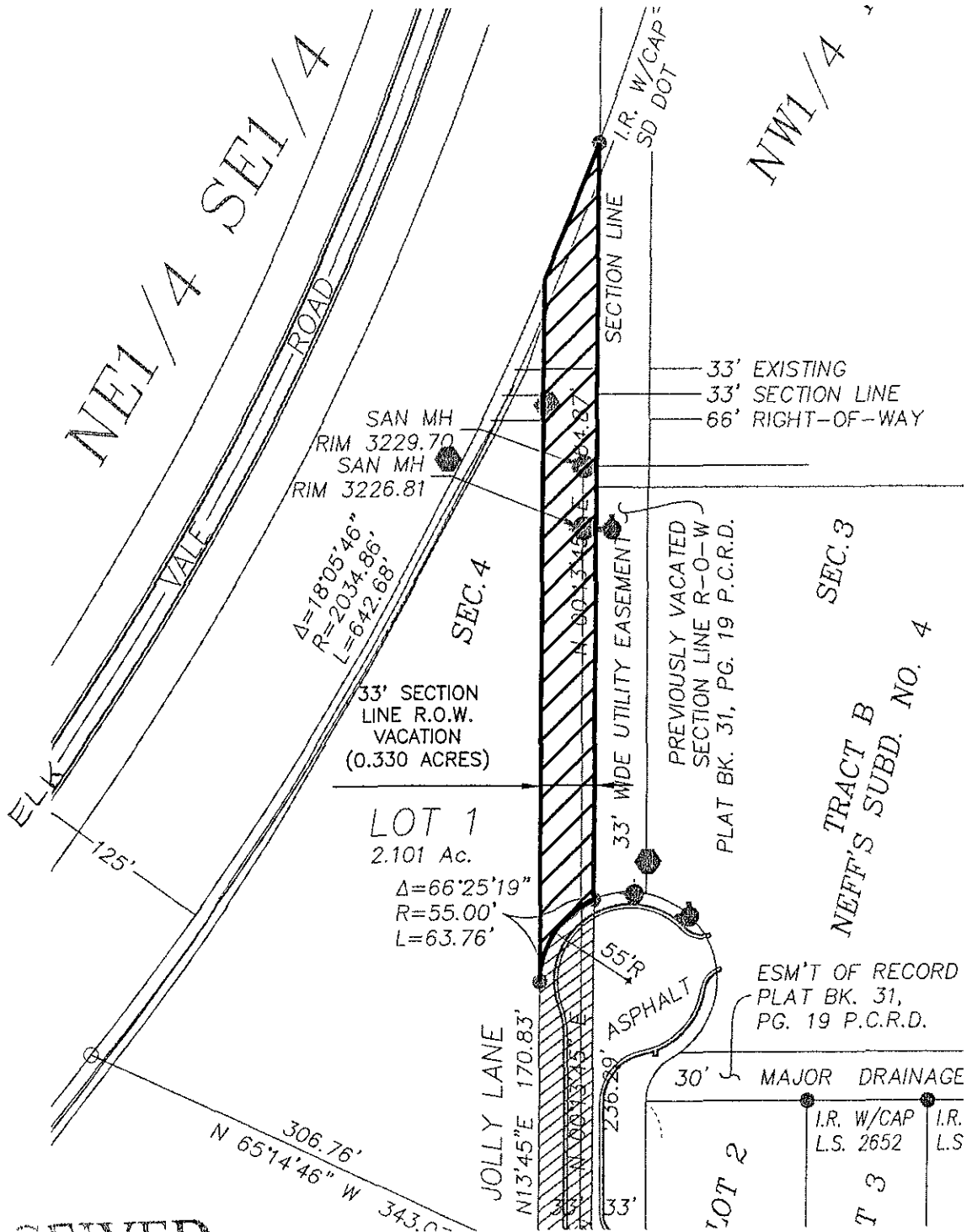


EXHIBIT A
SECTION LINE RIGHT-OF-WAY VACATION
LOCATED IN THE
NE 1/4 SE 1/4, SEC. 4, T1N, R8E, BHM
RAPID CITY, PENNINGTON COUNTY, SOUTH DAKOTA



RECEIVED

JUL 18 2007

City Growth
Management Department

BEGINNING AT A FOUND IRON ROD LABELED "SDDOT", THIS BEING THE POINT OF BEGINNING,
 THENCE A CHORD DISTANCE OF 90.41' A CHORD DIRECTION OF S 21°38'16" W THIS BEING AN ARC WITH A RADIUS OF 2034.86'
 A DELTA ANGLE OF 177°27'15" AND AN ARC LENGTH OF 90.41',
 THENCE 431.11' A DIRECTION OF S 00°13'45" W,
 THENCE A CHORD DISTANCE OF 60.25' A CHORD DIRECTION OF N 33°26'24" E THIS BEING AN ARC WITH A RADIUS OF 55.00'
 A DELTA ANGLE OF 246°25'18" AND AN ARC LENGTH OF 63.76',
 THENCE 464.87' A DIRECTION OF N 00°00'00" E
 BACK TO THE POINT OF BEGINNING, ALL CONTAINING 0.330 ACRES

DREAM DESIGN INTERNATIONAL, INC.

CIVIL ENGINEERING • LANDSCAPE ARCHITECTURE
LAND DEVELOPMENT • CONSTRUCTION ADMINISTRATION

