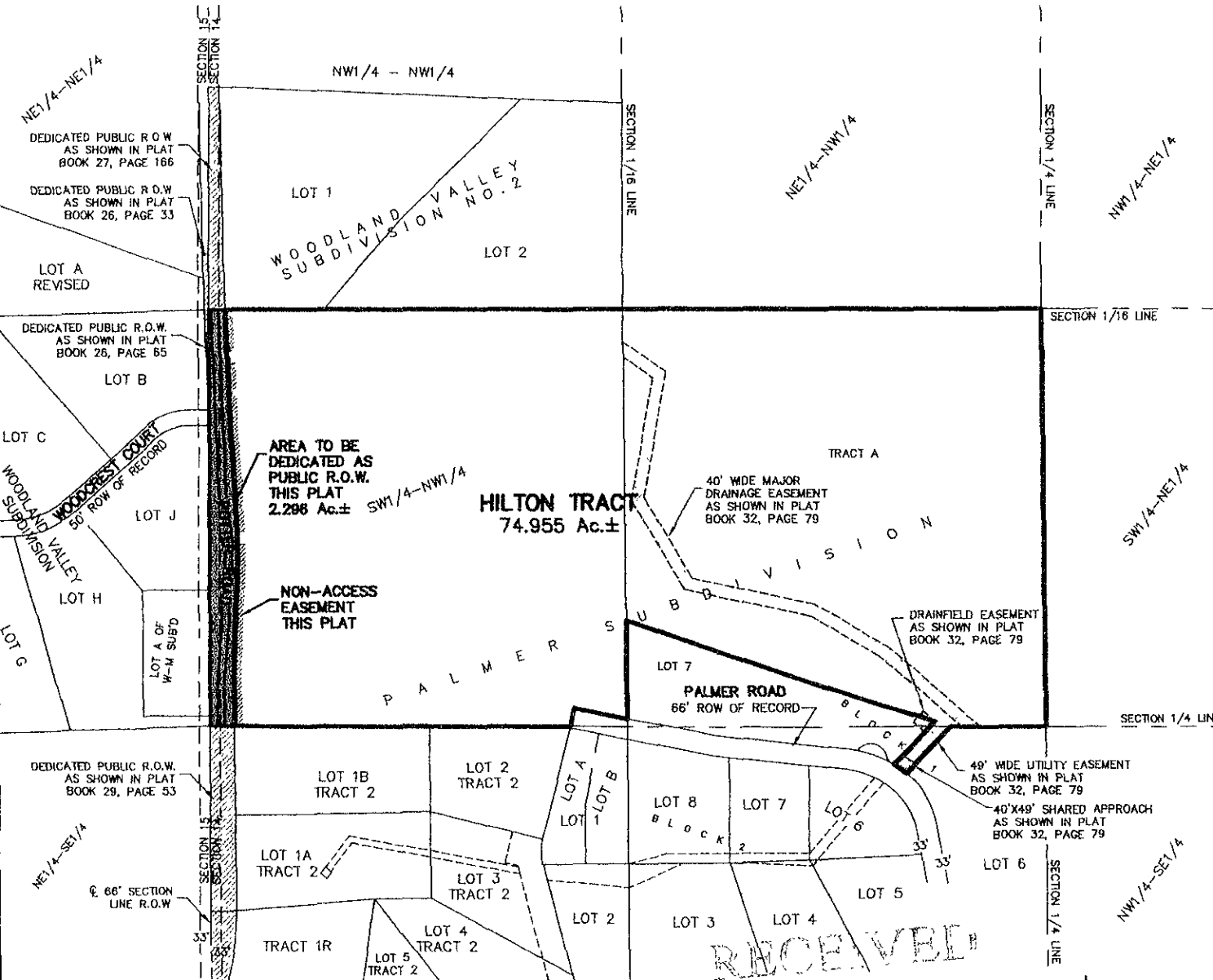


PLAT OF  
**HILTON TRACT,  
 PALMER SUBDIVISION**

(formerly Tract A of Palmer Subdivision and the  
 SW1/4 of the NW1/4 of Section 14, T2N, R6E, BHM)  
 LOCATED IN THE SW1/4 OF THE NW1/4, THE SE1/4 OF THE NW1/4, &  
 THE NE1/4 OF THE SW1/4,  
 SECTION 14, T2N, R6E, BHM  
 PENNINGTON COUNTY, SOUTH DAKOTA



RECEIVED  
 AUG 1 2007  
 Planning & Growth  
 Management Department

**Renner & Associates, LLC.**

616 Sixth St. \* Rapid City, SD 57701 \* 605/721-7310  
 FAX: 605/721-7313 \* E-MAIL: Gary@RennerAssoc.com  
 \* Spearfish 605/717-0016 \*

AUGUST 9, 2007  
 SCALE: 1"=500'



CITY HALL 1903